

BASIC WINDOW TRIM & PLANK DETAILS

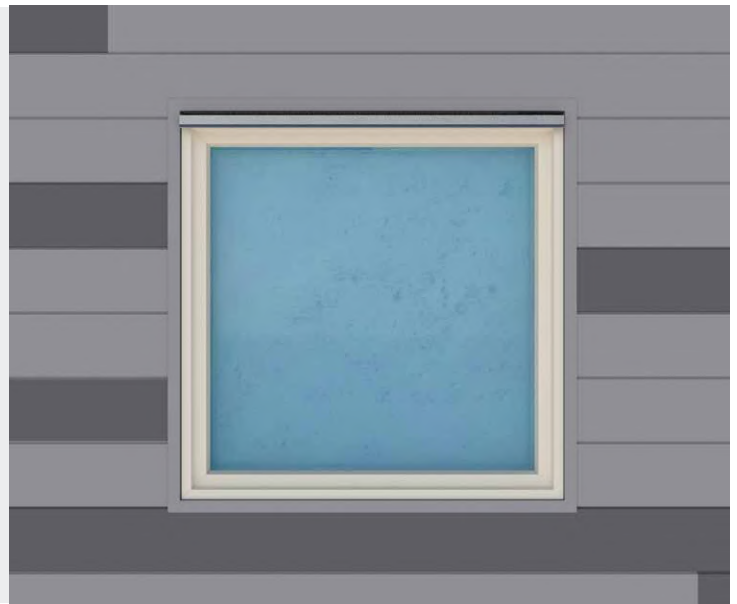
TECHNICAL BULLETIN

INSTALLATION OPTION 2

Using ONE-PIECE J-Trims

The following instructions demonstrate proper installation for window and door trim, using a typical design layout.

When installing trim around a door, follow instructions for jambs and head details only.



- 1 Ensure flashing & air/water barrier are completed to meet local building code (Figure 1).



Figure 1

- 2 Cut and install P13 around the sill and jambs of the window and P41 for the head of the window. Miter at a 45° angle on all 4 corners of the window. On the head and sill, add P30 plank backers 2" from ends and 16" on center (Figure 2).

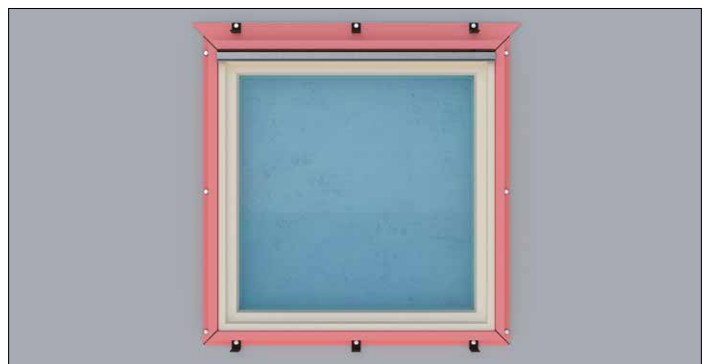


Figure 2

- 3 Notch the P46V or P44V to slide into the installed P13s under the sill of the window (Figure 3.1 and 3.2).

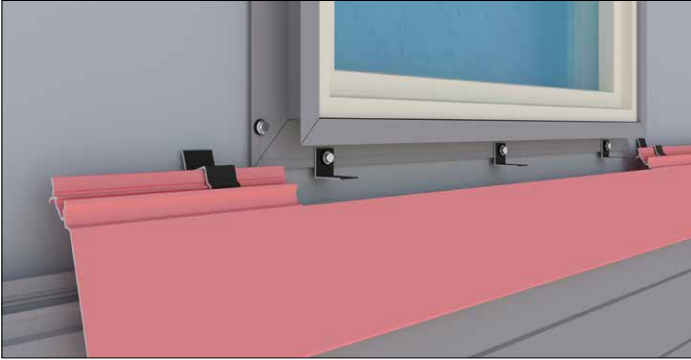


Figure 3.1



Figure 3.2

- 4 Install planks on either side of the jamb of the window (Figure 4.1). At the window head, notch the bottom of the plank to slide into the P41 (Figure 4.2 and 4.3).



Figure 4.1



Figure 4.2

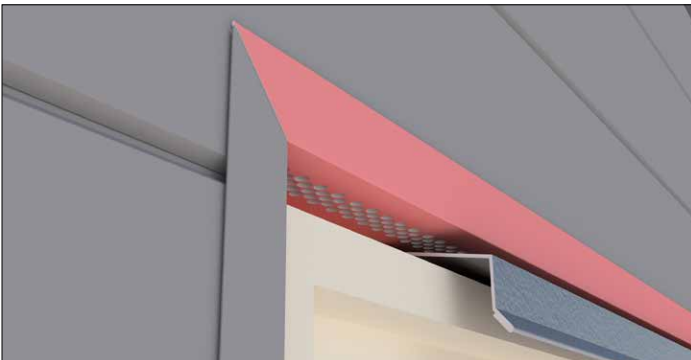


Figure 4.3



Figure 4.4



Contact us for **Free Estimates & Samples**

1-877-973-8746 | orderdesk@fastplank.com | fastplank.com

