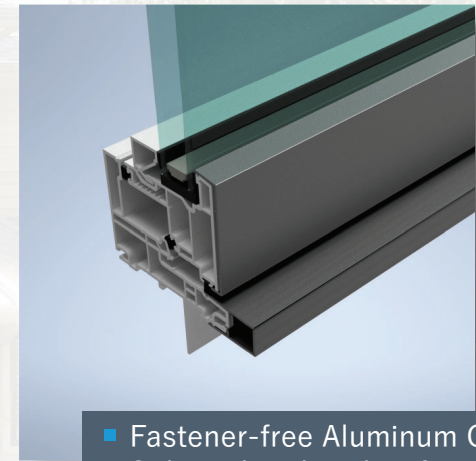


H SERIES 300 HYBRID



Curb appeal meets energy efficiency

H-Series hybrid aluminum windows provide the best of both worlds - the strength and architectural appeal of aluminum with the unparalleled efficiency and durability of vinyl.



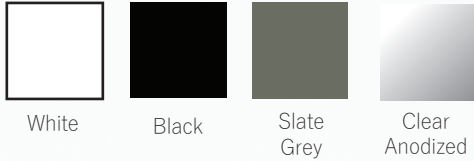
- Fastener-free Aluminum Cladding
- Stile and Rail sash + frame
- 3 1/4" Base Chassis
- Compression-seal Glazing
- Interior or Exterior Glazed
- 1" Nail Fin Projection
- Integrated Installation Clip Detail
- Interior + Exterior Accessories
- Shapes Available
- Structural + Muller Systems



EVERLAST
GROUP OF COMPANIES

Unlimited Colour Choices

- AAMA 2604 Architectural finish
- Custom colours + colour matching available
- Thick extruded aluminum exterior substrate
- Ultra low-maintenance white vinyl interior



Multi-Point Hardware

- Contemporary aesthetic + enhanced security



RADISSON
INDUSTRIES



Insulated Glass

- Energy savings + solar control
- Wide variety of glass coatings available in both dual and triple-glazing to perfectly fit your application



Performance Testing

AAMA/WDMA/CSA 101/LS.2/A440-08 A440S1-09

STRUCTURAL/WATER

Low Picture: Class CW - PG 85, 730Pa water

Casement: Class CW - PG 55, 730Pa water

Awning: Class R - PG 70, 730Pa water

THERMAL

U-Factor Range ($W/m^2 * K$): 0.85 - 1.65

Solar Heat Gain (SHGC): 0.21 - 0.61

Energy Rating (ER): 26 - 39



H

SERIES 300

HYBRID

