

Metalite® 8000



A Drained/Back-Ventilated Rainscreen with a Joint Spline

DS1037

**Metalite® 8000
Installation Details**

A Drained/Back-Ventilated Rainscreen with a Joint Spline

DS1037

MATERIAL NOTES:

Proprietary Materials

A. MOUNTING SYSTEM: METALITE® 8000 DRAINED/BACK-VENTILATED RAIN SCREEN SYSTEM AS DESIGNED AND MANUFACTURED BY TREMCO CPG. 1-1/2" SYSTEM DEPTH WITH 1/2" JOINTS (NOMINAL). SHOWCASING ACM REVEALS TO MATCH APPD. COLOR. ALL SYSTEM COMPONENTS TO BE STD. MILL FINISH.

B. METALITE® 8000 SYSTEM STIFFENERS: METALITE®-22336 STIFFENER SPACING: AT 24" O.C. CORNER ZONE (10'-0" FROM EDGE): AT 16" O.C

System Notes

C. TREMCO CPG INC. LINE OF METAL WALL PANEL SYSTEM HAVE BEEN TESTED FOR USE IN VERTICAL APPLICATIONS. USING THE ABOVE MENTIONED SYSTEM IN A HORIZONTAL FASHION SUCH AS PARAPET CAP, TOP OF CANOPY, ROOFING APPLICATIONS OR OTHER SIMILAR CONDITIONS WILL NOT CARRY THE TREMCO GPG INC. WORKMANSHIP WARRANTY THAT IS STANDARD WITH VERTICAL APPLICATIONS. WATER PENETRATION IS TO BE EXPECTED BEHIND THE METAL PANELS IF USED IN A FLAT OR SLOPED HORIZONTAL PLANE. TREMCO CPG INC. CANNOT BE HELD LIABLE FOR WATER INFILTRATION BY IMPROPER USE/APPLICATION OF THE PANEL SYSTEM.

D. SEE PRODUCT DATA SUBMITTAL FOR PANEL SYSTEM APPLICATIONS AND LIMITATION. PANELS CANNOT BE WALKED ON AND NOTHING CAN BE PLACE ON TOP OF THEM WITHOUT BREAKING THE SEALANT JOINTS OR THE ACTUAL PANEL MATERIAL WHICH WILL RENDER THE WORKMANSHIP WARRANTY NULL AND VOID.

CONTRACTOR NOTES

1. ACM PANEL SYSTEM IS NOT A STRUCTURAL MEMBER AND THEREFORE IS NOT CAPABLE OF SUPPORTING ANY TYPE OF LIGHT FIXTURE. ANY LIGHT FIXTURE MUST BE ATTACHED THROUGH THE ACM PANEL ONTO THE MAIN STRUCTURE.

GENERAL NOTES

1. ALL TRANSITIONS BETWEEN METAL PANELS AND ADJACENT MATERIALS MUST BE COORDINATED BY THE G.C. TO ENSURE WATER TIGHT CONDITIONS.
2. ALL THE SYSTEM EXTRUSIONS ARE MANUFACTURED WITH 6063 T6 ALUMINUM ALLOY, EXCEPT AS NOTED.
3. ALL TREMCO CPG INC. SYSTEMS ARE DESIGNED TO FOLLOW THE BUILDING/STRUCTURE TO WHICH THEY ARE GOING TO BE ATTACHED. TREMCO CPG INC. PANELS WILL THEREFORE FOLLOW ALL VARIANCES IN NON-COPLANAR AND/OR NON-PARALLEL MOUNTING SURFACES. TREMCO CPG INC. IS NOT RESPONSIBLE, FINANCIALLY OR OTHERWISE, FOR ANY OF THE FOLLOWING:
 - UNDESIRE AFFECTS AS A RESULT OF NON-COPLANAR AND/OR NON-PARALLEL MOUNTING SURFACES.
 - SYSTEM AND/OR ATTACHMENT CHANGES, MODIFICATIONS, OR VARIATIONS OF ANY KIND, WHICH ARE REQUIRED AS A RESULT OF ANY CONDITION NOT SHOWN IN THE APPROVED SHOP DRAWINGS.
4. THESE SHOP DRAWINGS, WHEN MARKED APPROVED SHALL BE DEEMED AS AN ACCURATE INTERPRETATION OF THE PROJECT REQUIREMENTS AND SUCH APPROVAL SHALL CONSTITUTE AUTHORIZATION TO PROCEED WITH MATERIAL RELEASE AND FABRICATION. ANY CHANGES REQUESTED, SUBSEQUENT TO APPROVAL DATE, MUST BE SUBMITTED IN WRITING.
5. TREMCO CPG INC. SYSTEMS HAVE BEEN TESTED WITH 16GA STUD FRAMING AT 16" O.C. (BY OTHERS), LIGHTER GAUGE FRAME IS NOT RECOMMENDED DUE TO WEAK PULLOUT VALUES. FRAMING MUST BE COORDINATED WITH PANEL JOINTS.
6. LARGE, FLAT SURFACES OF SHEET METAL WILL EXHIBIT OIL-CANNING. THE LARGER THE SURFACE, THE LIGHTER THE GAUGE, AND THE MORE VISIBLE THE APPLICATION, THE MORE OBVIOUS THE OIL-CANNING. OIL-CANNING IS AN INHERENT FACT OF SHEET METAL INSTALLATIONS AND IS ONLY AN AESTHETIC QUALITY, NOT A STRUCTURAL ONE. OIL-CANNING IS THEREFORE NOT A CAUSE FOR PANEL REJECTION. DESIGNER OF RECORD SHALL SPECIFY SHEET METAL THICKNESS AS APPLICABLE TO MITIGATE OIL CANNING.
7. ALL ROOF-FACING ACM JOINTS MUST BE CAULKED, REGARDLESS OF THE ANCHORING SYSTEM USED, AND WHETHER OR NOT THE JOINT IS ON A SLOPE.
8. SEALANT TO BE USED: TREMCO PROGALZE SSG, COLOR BLACK UNLESS OTHERWISE NOTED
9. ANODIZED MATERIALS, MICA AND METALLIC FINISHES ARE BATCH SENSITIVE (IF ORDERED SEPARATELY).
10. METALLIC AND MICA FINISHES ARE DIRECTIONAL.
11. METAL PANELS PROVIDE NO SUPPORT FOR SIGNAGE OR OTHER FIXTURES, THESE MUST BE ANCHORED DIRECTLY TO THE FRAME BEHIND THE PANELS.
12. MAXIMUM ACM FACE WIDTH IS 60 INCHES.
13. MAXIMUM ACM FACE LENGTH IS 194 INCHES.

EXCLUSIONS

1. METAL STUD FRAMING OR SUB-FRAMING FOR METAL PANEL ATTACHMENT. FURRING CHANNELS, ZEE GIRTS AND/OR HAT CHANNELS.
2. EXTERIOR SHEATHING OR GYPSUM BOARD.
3. ANY TYPE OF WEATHER BARRIER & THRU WALL FLASHING.
4. RIGID OR BATT INSULATION.
5. EIFS, STUCCO, SUSPENDED CEILING.
6. PENETRATIONS IN THE PANEL TO ACCOMMODATE OTHER TRADES.
7. STRUCTURAL OR SECONDARY STEEL SUPPORTS.
8. GLASS AND GLAZING, WINDOWS, CURTAIN WALL, STOREFRONT SYSTEMS AND LOUVERS.
9. METAL COPINGS, ROOF CLEATS, COUNTER FLASHING, SCUPPERS, GUTTERS, OR DOWNSPOUTS.
10. ROOF SHEATHING & TAPERED ROOF INSULATION.
11. PERIMETER SEALANT TO WINDOW OR OTHER ADJACENT MATERIALS (I.E. STONE, EIFS, BRICK).
12. WINDOW SILL PAN/FLASHING.
13. EXCESS SHIMMING TO PLUMB WALLS
14. EXPANSION JOINT MATERIAL
15. MITER/FACTORY CORNERS
16. ALL FIRE STOPPING, FIRE CAULKING OR STC RATED MATERIALS.
17. ANY ATTIC STOCK OF MATERIALS
18. WATER TIGHT WARRANTY AT HORIZONTAL APPLICATIONS
19. FIN/AL CLEANING
20. ALL BREAK METAL FLASHINGS NOT AN INTEGRAL PART OF OUR PANEL SYSTEM.
21. ENGINEERING STAMP ON SHOP DRAWINGS
22. ENGINEERING CALCULATIONS / DELEGATED DESIGN

Table of Contents

Detail

VERTICAL JOINT	M8000-01
HORIZONTAL JOINT	M8000-02
BASE DETAIL	M8000-03
STIFFENER DETAIL	M8000-04
OUTSIDE CORNER - PLAN VIEW	M8000-05
OUTSIDE CORNER - SECTION VIEW	M8000-06
TYPICAL COPING CONDITION	M8000-07
END DETAIL - LEFT SIDE	M8000-08
END DETAIL - RIGHT SIDE	M8000-09
INSIDE CORNER PLAN DETAIL - LEFT	M8000-10
INSIDE CORNER PLAN DETAIL - RIGHT	M8000-11
INSIDE CORNER SECTION DETAIL	M8000-12
TOP DETAIL	M8000-13
WINDOW SILL	M8000-WS-01
WINDOW HEAD	M8000-WH-01
WINDOW JAMB - LEFT SIDE	M8000-WJ-01
JAMB DETAILS - RIGHT & LEFT SIDE	M8000-WJ-02
WINDOW HEAD DETAIL - SOFFIT	M8000-WHS-01
DOOR HEAD	M8000-DH-01
DOOR JAMB - LEFT SIDE	M8000-DJ-01
DOOR JAMB - RIGHT SIDE	M8000-DJ-02
LOUVER SILL	M8000-LS-01
LOUVER HEAD	M8000-LH-01
LOUVER JAMB - LEFT SIDE	M8000-LJ-01
LOUVER JAMB - RIGHT SIDE	M8000-LJ-02
EXPANSION DOUBLE JOINT	EX-M8000-DJ-01
EXPANSION JOINT - RIGHT SIDE	EX-M8000-01
EXPANSION JOINT - LEFT SIDE	EX-M8000-02
OVERFLOW SCUPPER DETAIL	M8000-OS-01
DOWNSPOUT NOZZLE DETAIL	M8000-DW-01
SOFFIT LIGHT DETAIL	M8000-SL-01
TOP END DETAIL @ COLUMN	M8000-COL-01
BASE DETAIL @ COLUMN	M8000-COL-02
TYPICAL ROUND COLUMN - PLAN	M8000-COL-03
WALL SECTION	M8000-G-01

NOTE:

DRYVIT MAKES NO REPRESENTATION REGARDING CONFORMITY OF ITS SUGGESTIONS TO MODEL BUILDING CODES, ENGINEERING CRITERIA, SPECIFIC APPLICATIONS, OR PROJECT LOCATIONS. ALL COMPONENTS INDICATED IN ILLUSTRATIONS, AS WELL AS OTHERS THAT MAY BE REQUIRED FOR THE INTEGRITY OF THE SYSTEM SHALL BE DESIGNED, DETAILED, AND ENGINEERED BY REPRESENTATIVES OF THE ARCHITECT, OWNER, OR CONTRACTOR TO BE IN CONFORMANCE WITH MODEL CODES, ARCHITECTURAL, AND ENGINEERING REQUIREMENTS PERTAINING TO SPECIFIC BUILDING PROJECTS.

DRYVIT MAKES NO WARRANTY, EXPRESSED OR IMPLIED, AS TO THE ARCHITECTURAL DESIGN, ENGINEERING, OR WORKMANSHIP OF PROJECTS UTILIZING DRYVIT SYSTEMS OR PRODUCTS.

THE LIABILITIES OF DRYVIT SHALL BE AS STATED IN THE DRYVIT STANDARD WARRANTY. CONTACT DRYVIT FOR A FULL AND COMPLETE COPY OF THE WARRANTY.

This detail is for general informational purposes, only. The project design professional determines, in its sole discretion, whether this detail or a functionally equivalent detail is best suited for the project with respect to any architecture, engineering, and design requirements, including any local building code requirements. If this document is not reviewed and the product is not approved for use by a licensed design professional, the customer agrees that the detail may contain substantive flaws requiring correction, and hereby releases Tremco CPG Inc. from any and all liability related to the design and installation of the product. This detail is subject to change without notice. Contact Tremco to ensure you have the most recent version.

Metalite® 8000



Detail: Table of Contents

Drawn by: M.E.

Revision #: 0

Checked by: N/A

Revised by: N/A

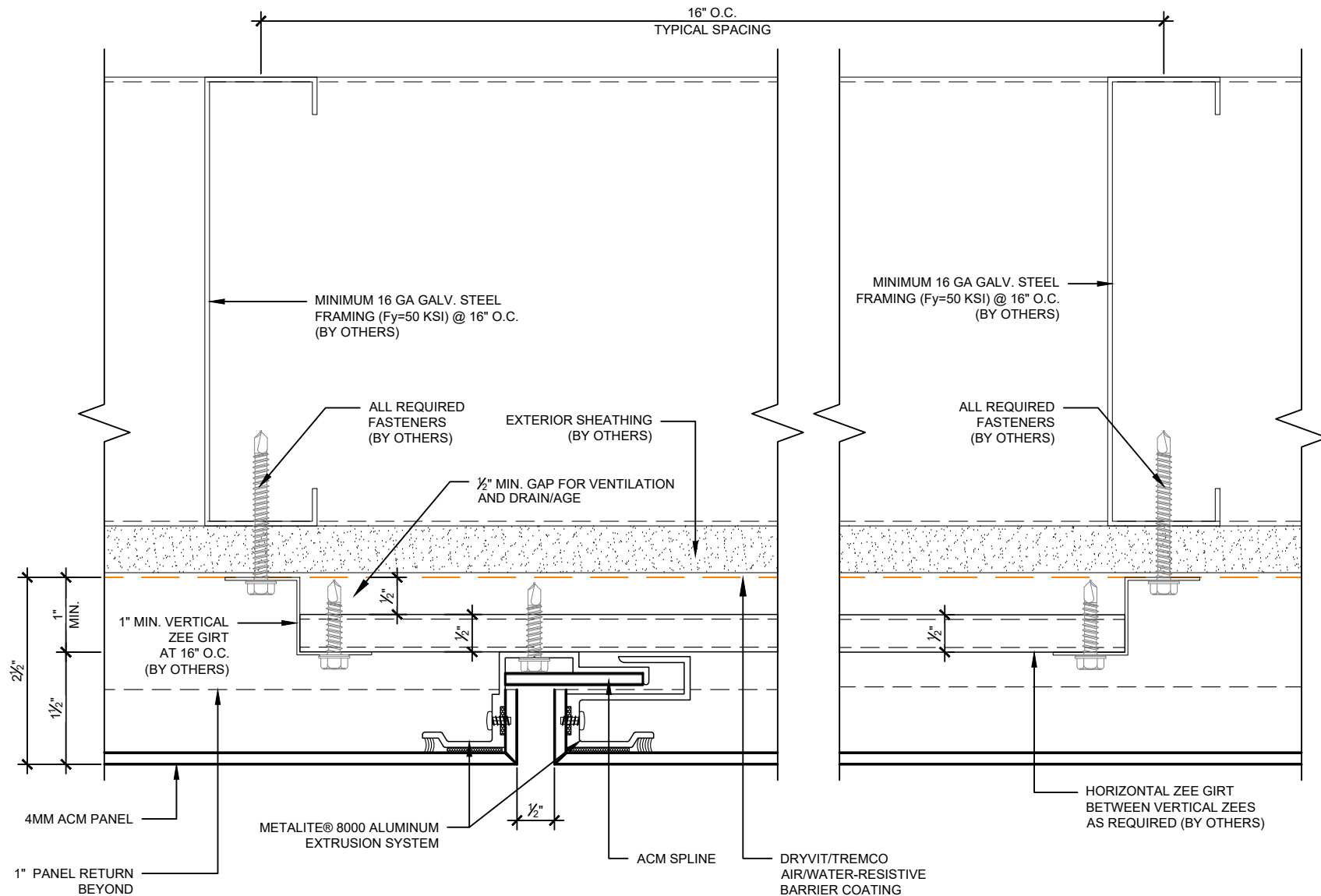
Scale: NTS

Date: 5/28/2024

File Name:

TOC





This detail is for general informational purposes, only. The project design professional determines, in its sole discretion, whether this detail or a functionally equivalent detail is best suited for the project with respect to any architecture, engineering, and design requirements, including any local building code requirements. If this document is not reviewed and the product is not approved for use by a licensed design professional, the customer agrees that the detail may contain substantive flaws requiring correction, and hereby releases Tremco CPG Inc. from any and all liability related to the design and installation of the product. This detail is subject to change without notice. Contact Tremco to ensure you have the most recent version.

Metalite® 8000



Detail: Vertical Joint

Drawn by: M.E.

Revision #: 0

Checked by: N/A

Revised by: N/A

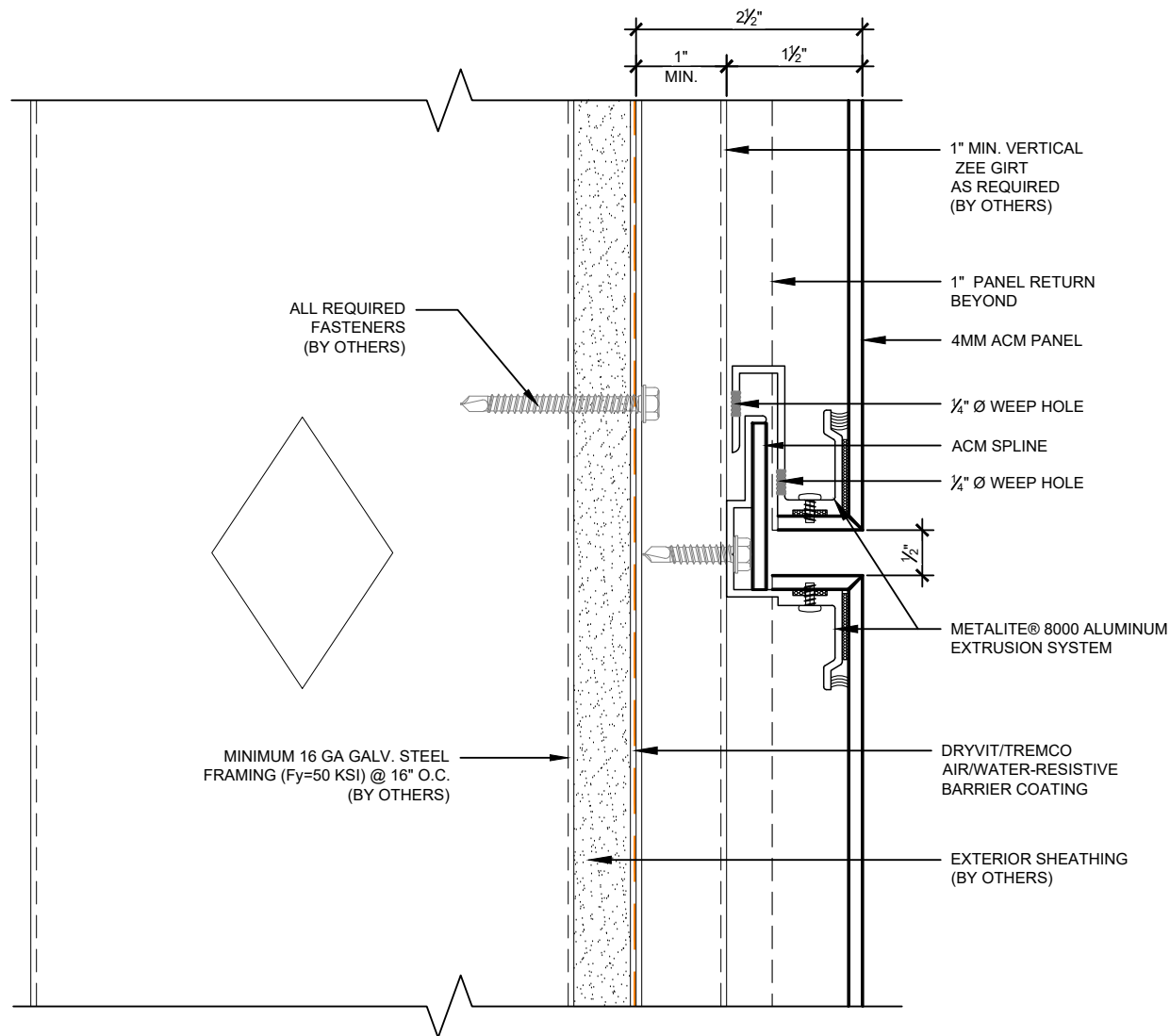
Scale: 6" = 1'-0"

Date: 5/28/2024

File Name:

M8000-01





This detail is for general informational purposes, only. The project design professional determines, in its sole discretion, whether this detail or a functionally equivalent detail is best suited for the project with respect to any architecture, engineering, and design requirements, including any local building code requirements. If this document is not reviewed and the product is not approved for use by a licensed design professional, the customer agrees that the detail may contain substantive flaws requiring correction, and hereby releases Tremco CPG Inc. from any and all liability related to the design and installation of the product. This detail is subject to change without notice. Contact Tremco to ensure you have the most recent version.

Metalite® 8000

Detail: Horizontal Joint

Drawn by: M.E.

Revision #: 0

Checked by: N/A

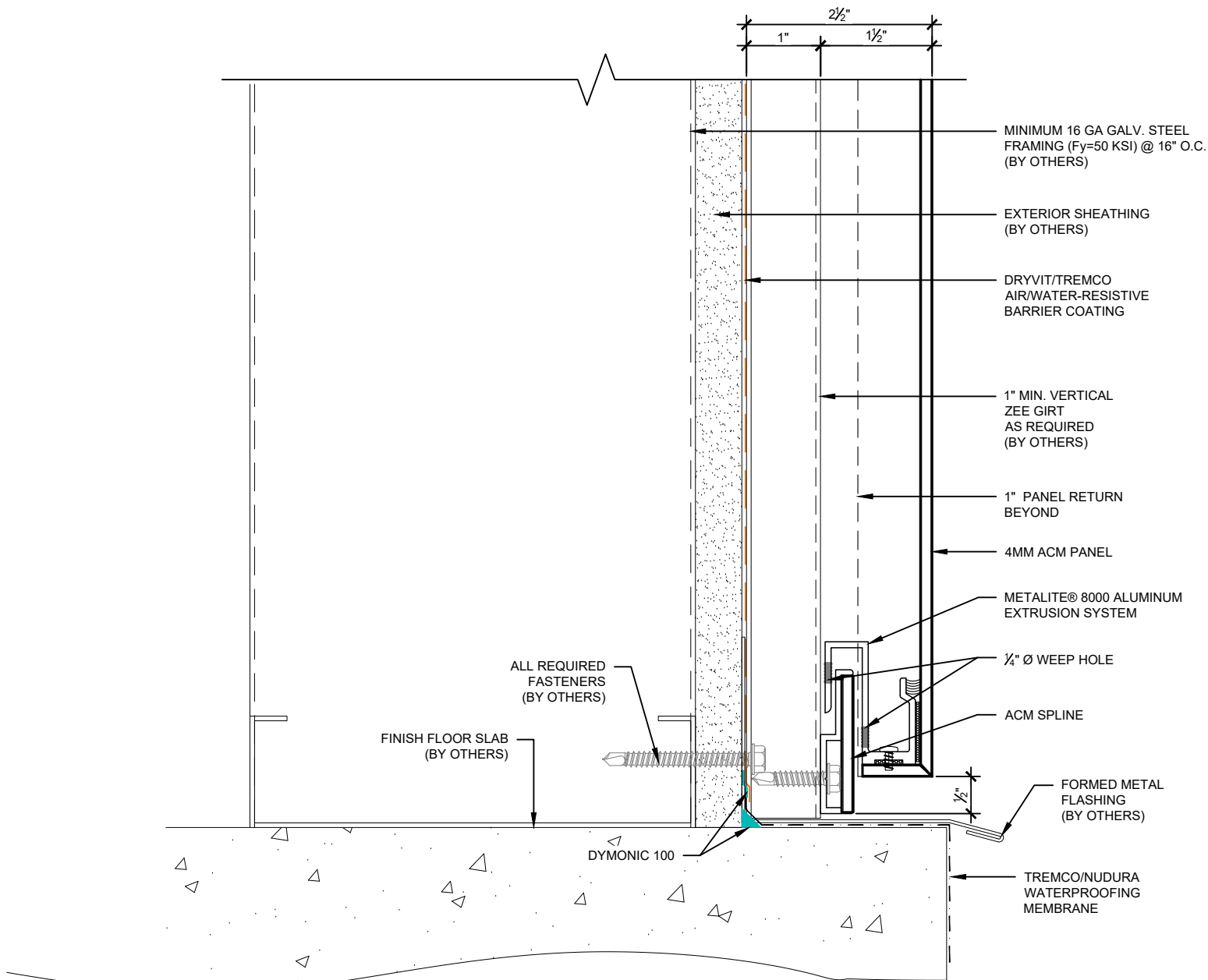
Revised by: N/A

Scale: 6" = 1'-0"

Date: 5/28/2024

File Name:

M8000-02



This detail is for general informational purposes, only. The project design professional determines, in its sole discretion, whether this detail or a functionally equivalent detail is best suited for the project with respect to any architecture, engineering, and design requirements, including any local building code requirements. If this document is not reviewed and the product is not approved for use by a licensed design professional, the customer agrees that the detail may contain substantive flaws requiring correction, and hereby releases Tremco CPG Inc. from any and all liability related to the design and installation of the product. This detail is subject to change without notice. Contact Tremco to ensure you have the most recent version.

Metalite® 8000

Detail: Base Detail

File Name:

Drawn by: M.E.

Checked by: N/A

Scale: 6" = 1'-0"

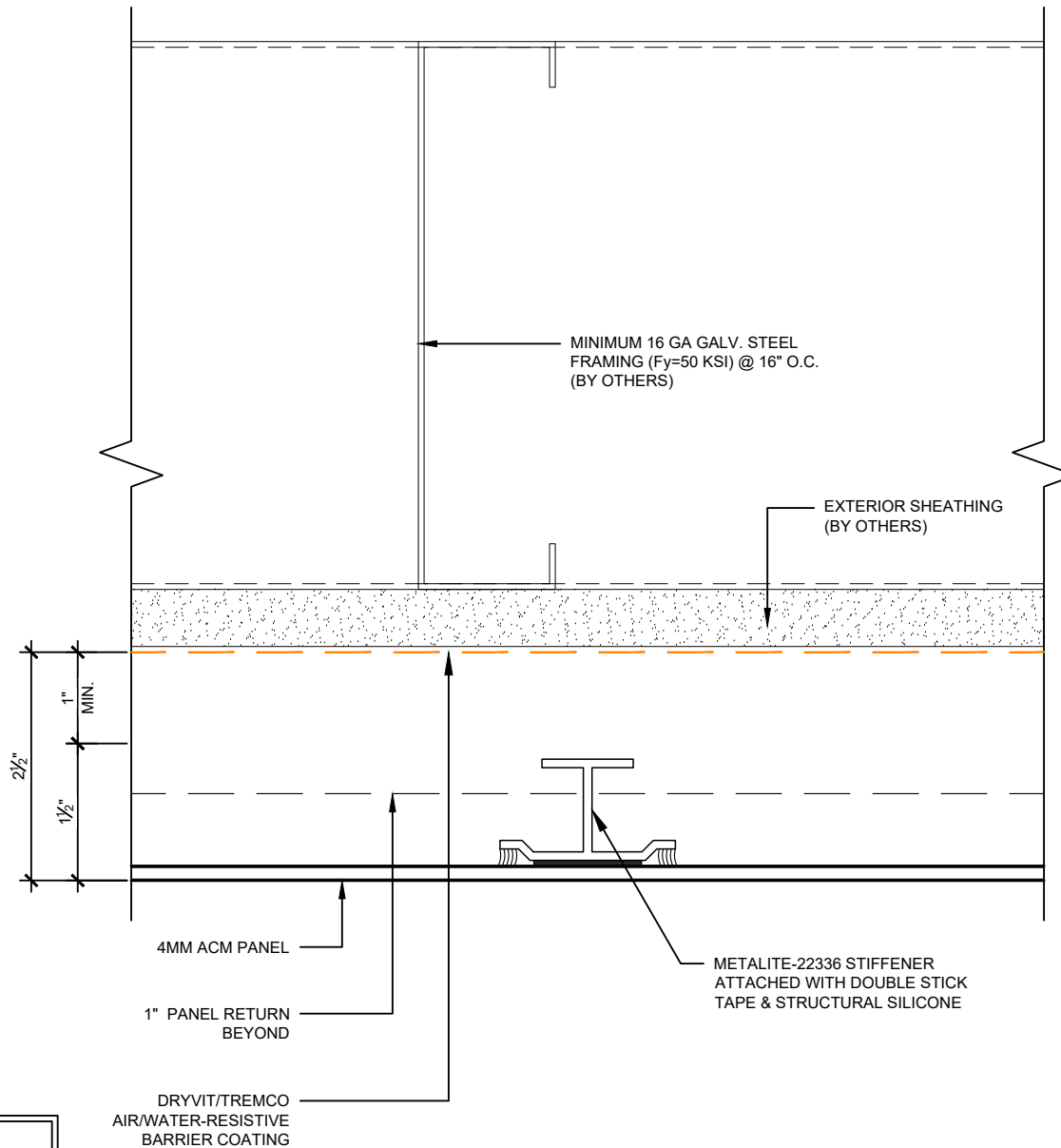
M8000-03

Revision #: 0

Revised by: N/A

Date: 5/28/2024

www.tremcocpg.com



NOTES:

1. THIS DETAIL IS FOR ENGINEERING CALCS PURPOSE.

This detail is for general informational purposes, only. The project design professional determines, in its sole discretion, whether this detail or a functionally equivalent detail is best suited for the project with respect to any architecture, engineering, and design requirements, including any local building code requirements. If this document is not reviewed and the product is not approved for use by a licensed design professional, the customer agrees that the detail may contain substantive flaws requiring correction, and hereby releases Tremco CPG Inc. from any and all liability related to the design and installation of the product. This detail is subject to change without notice. Contact Tremco to ensure you have the most recent version.

Metalite® 8000

Detail: Stiffener Detail

Drawn by: M.E.

Revision #: 0

Checked by: N/A

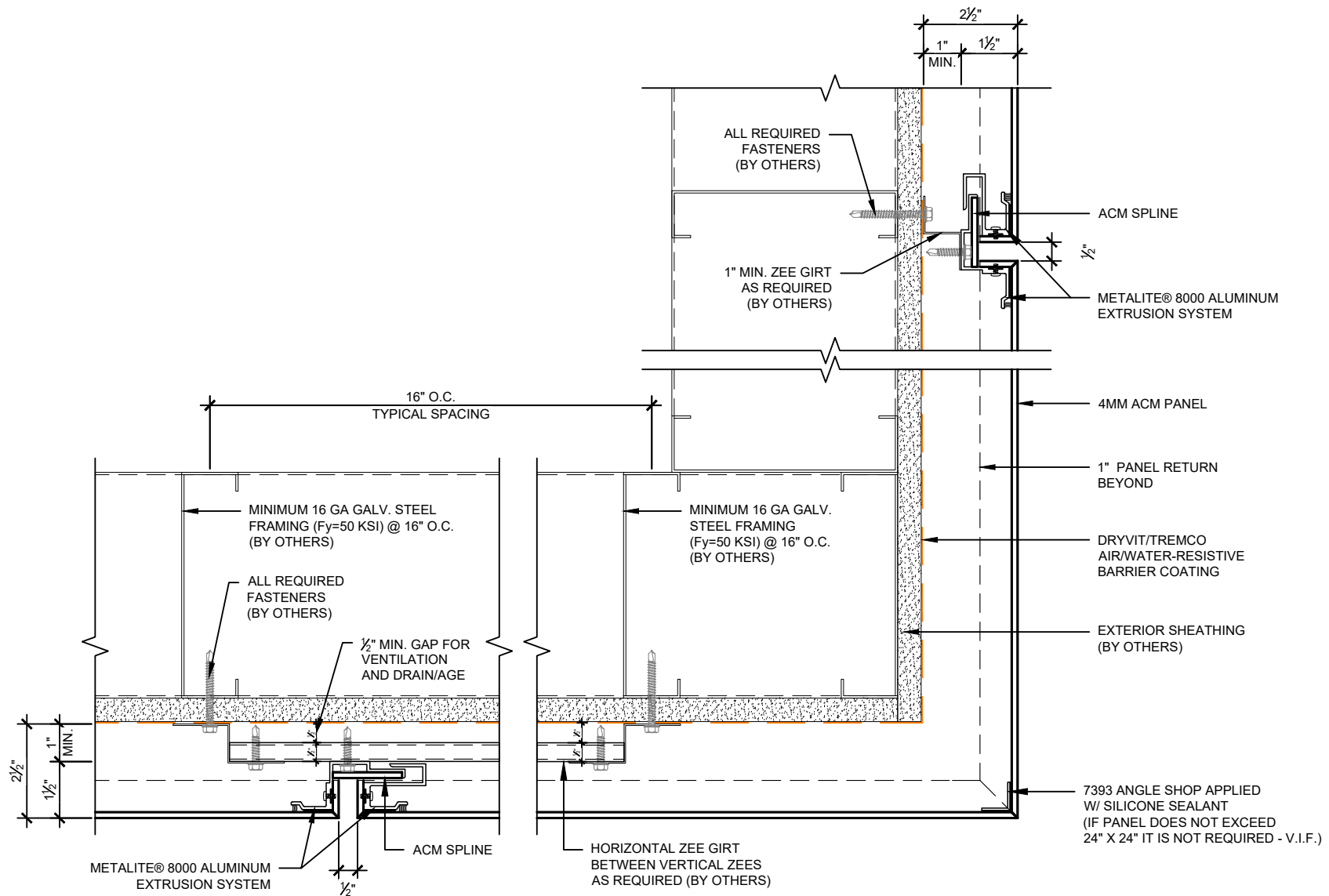
Revised by: N/A

Scale: 6" = 1'-0"

Date: 5/28/2024

File Name:

M8000-04



This detail is for general informational purposes, only. The project design professional determines, in its sole discretion, whether this detail or a functionally equivalent detail is best suited for the project with respect to any architecture, engineering, and design requirements, including any local building code requirements. If this document is not reviewed and the product is not approved for use by a licensed design professional, the customer agrees that the detail may contain substantive flaws requiring correction, and hereby releases Tremco CPG Inc. from any and all liability related to the design and installation of the product. This detail is subject to change without notice. Contact Tremco to ensure you have the most recent version.

Metalite® 8000

Detail: Outside Corner - Plan View

Drawn by: M.E.

Checked by: N/A

Scale: 3" = 1'-0"

Revision #: 0

Revised by: N/A

Date: 5/28/2024

File Name:

M8000-05

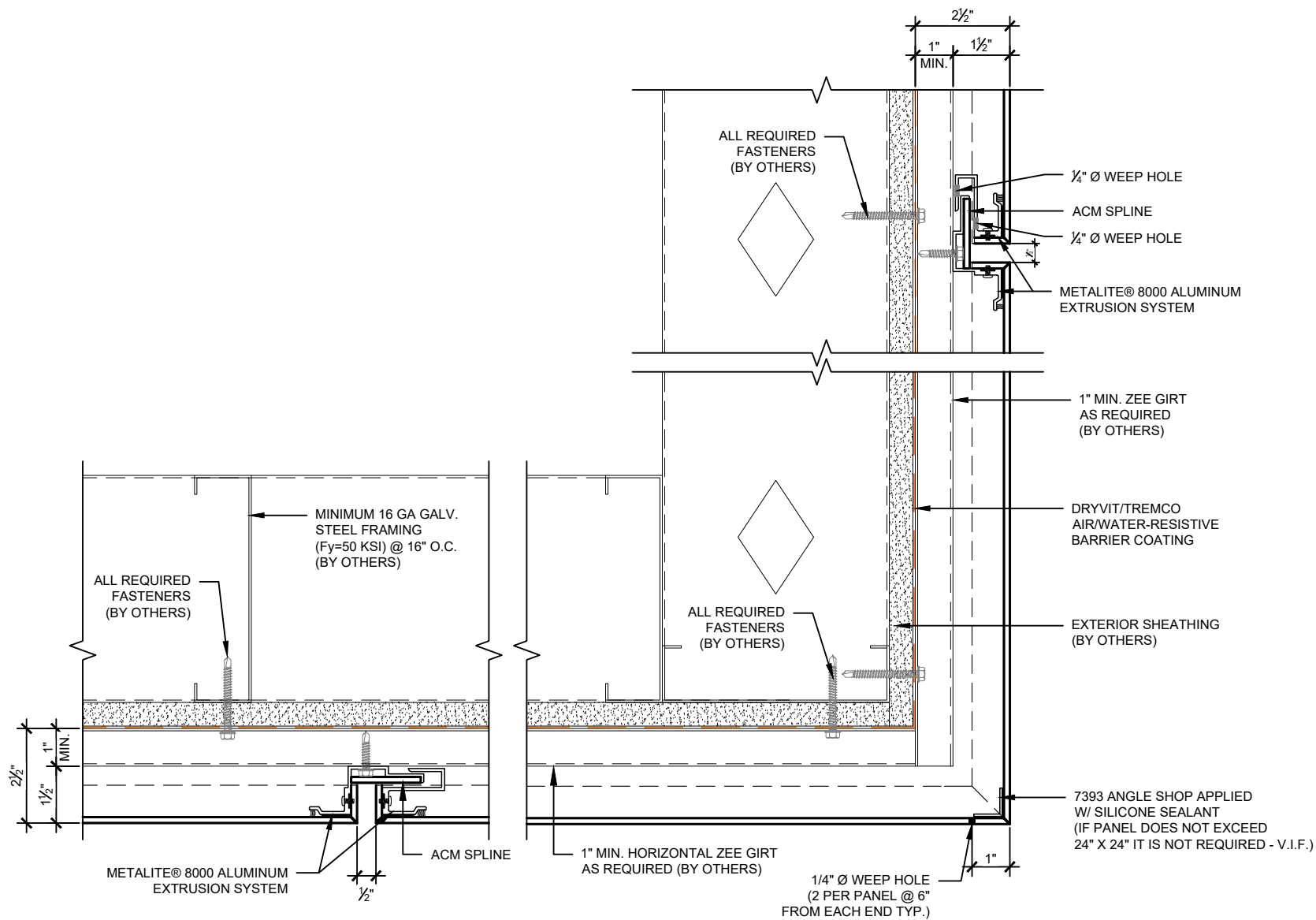


Dryvit Technical Support: 800-556-7752



Construction Products Group

www.tremcocpg.com



This detail is for general informational purposes, only. The project design professional determines, in its sole discretion, whether this detail or a functionally equivalent detail is best suited for the project with respect to any architecture, engineering, and design requirements, including any local building code requirements. If this document is not reviewed and the product is not approved for use by a licensed design professional, the customer agrees that the detail may contain substantive flaws requiring correction, and hereby releases Tremco CPG Inc. from any and all liability related to the design and installation of the product. This detail is subject to change without notice. Contact Tremco to ensure you have the most recent version.

Metalite® 8000

Detail: Outside Corner - Section View

File Name:

Drawn by: M.E.

Checked by: N/A

Scale: 3" = 1'-0"

M8000-06

Revision #: 0

Revised by: N/A

Date: 5/28/2024

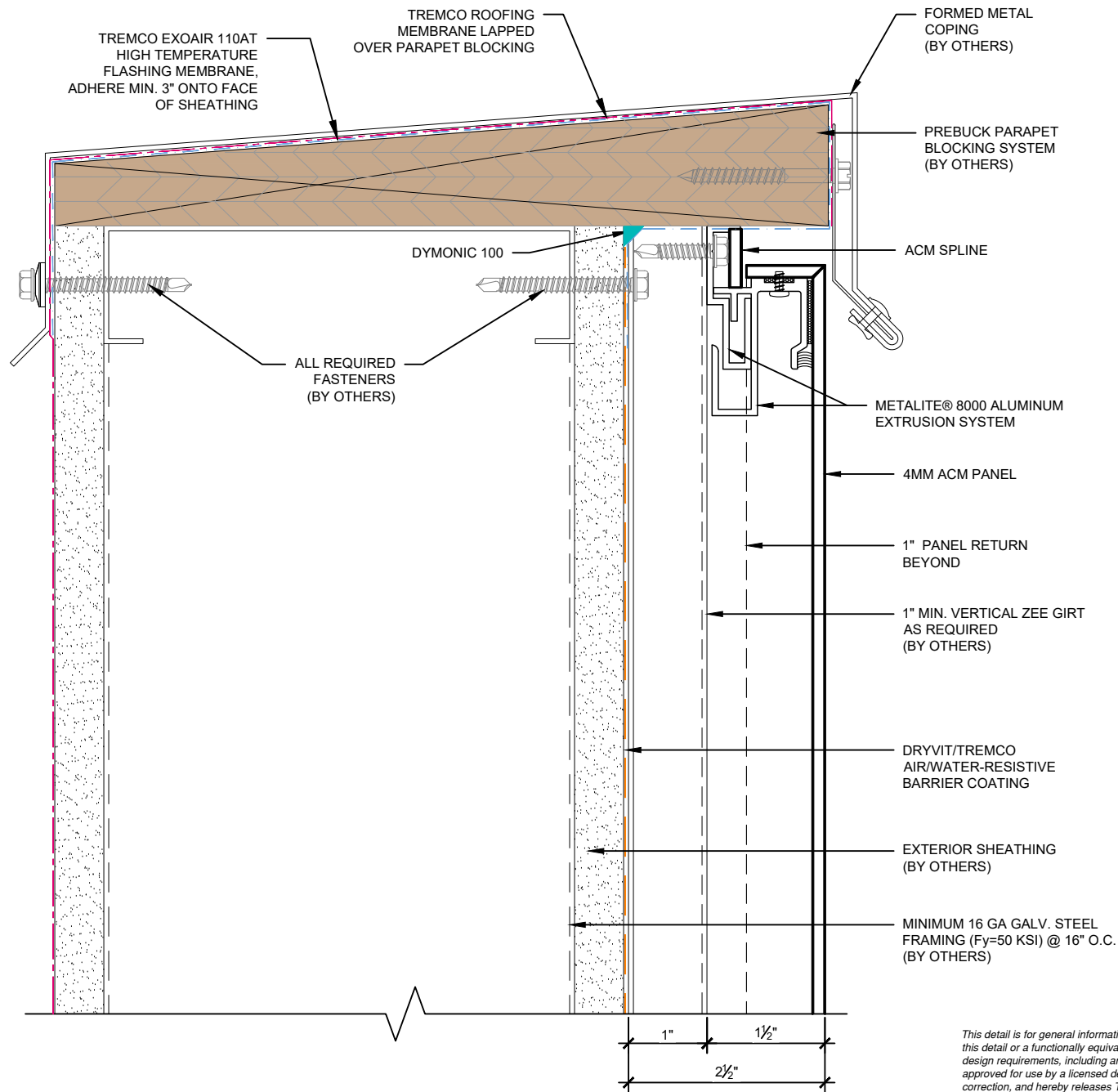


Dryvit Technical Support: 800-556-7752



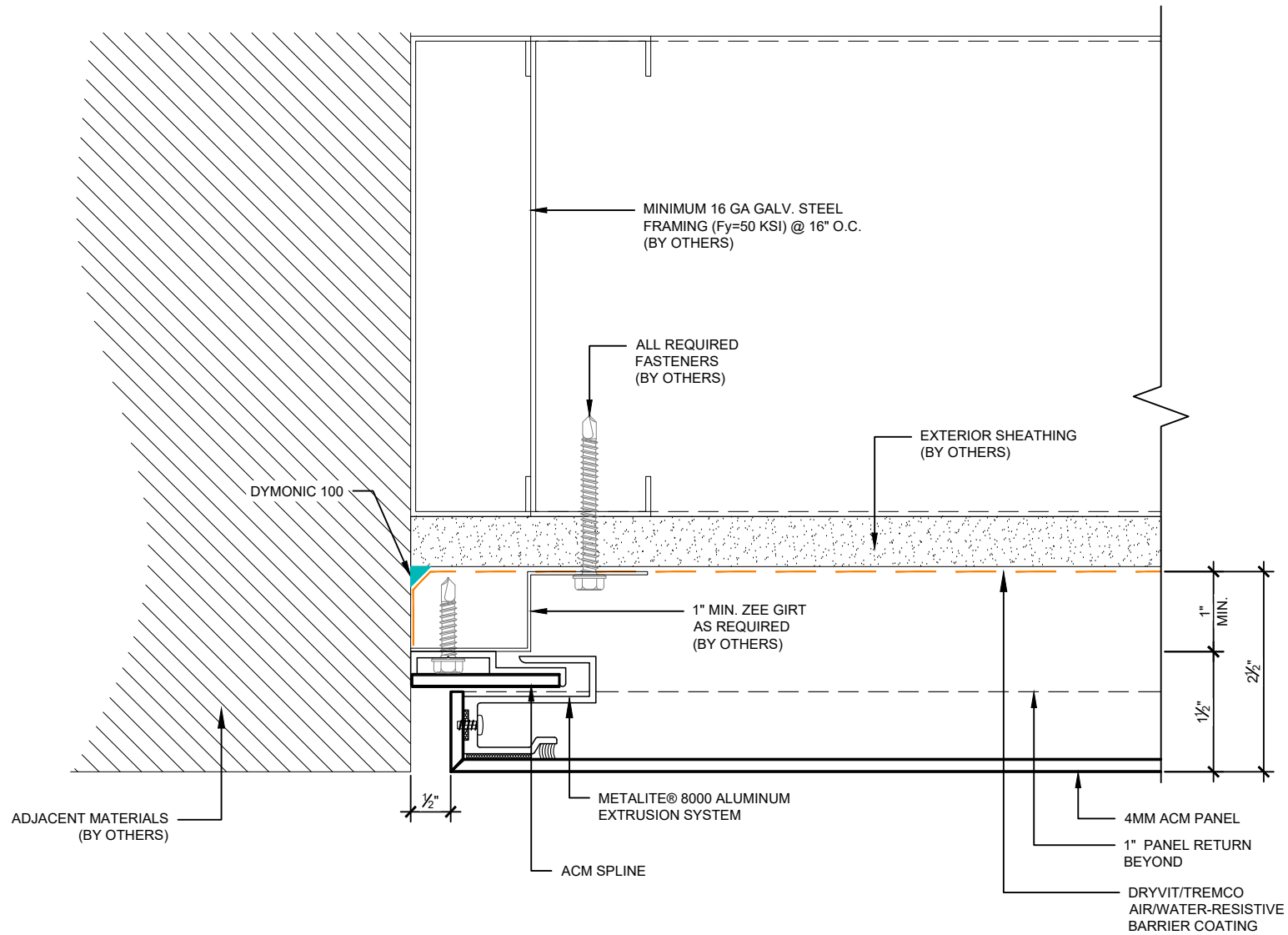
Construction Products Group

www.tremcocpg.com



This detail is for general informational purposes, only. The project design professional determines, in its sole discretion, whether this detail or a functionally equivalent detail is best suited for the project with respect to any architecture, engineering, and design requirements, including any local building code requirements. If this document is not reviewed and the product is not approved for use by a licensed design professional, the customer agrees that the detail may contain substantive flaws requiring correction, and hereby releases Tremco CPG Inc. from any and all liability related to the design and installation of the product. This detail is subject to change without notice. Contact Tremco to ensure you have the most recent version.

Metalite® 8000



This detail is for general informational purposes, only. The project design professional determines, in its sole discretion, whether this detail or a functionally equivalent detail is best suited for the project with respect to any architecture, engineering, and design requirements, including any local building code requirements. If this document is not reviewed and the product is not approved for use by a licensed design professional, the customer agrees that the detail may contain substantive flaws requiring correction, and hereby releases Tremco CPG Inc. from any and all liability related to the design and installation of the product. This detail is subject to change without notice. Contact Tremco to ensure you have the most recent version.

Metalite® 8000

Detail: End Detail - Left Side

Drawn by: M.E.

Revision #: 0

Checked by: N/A

Revised by: N/A

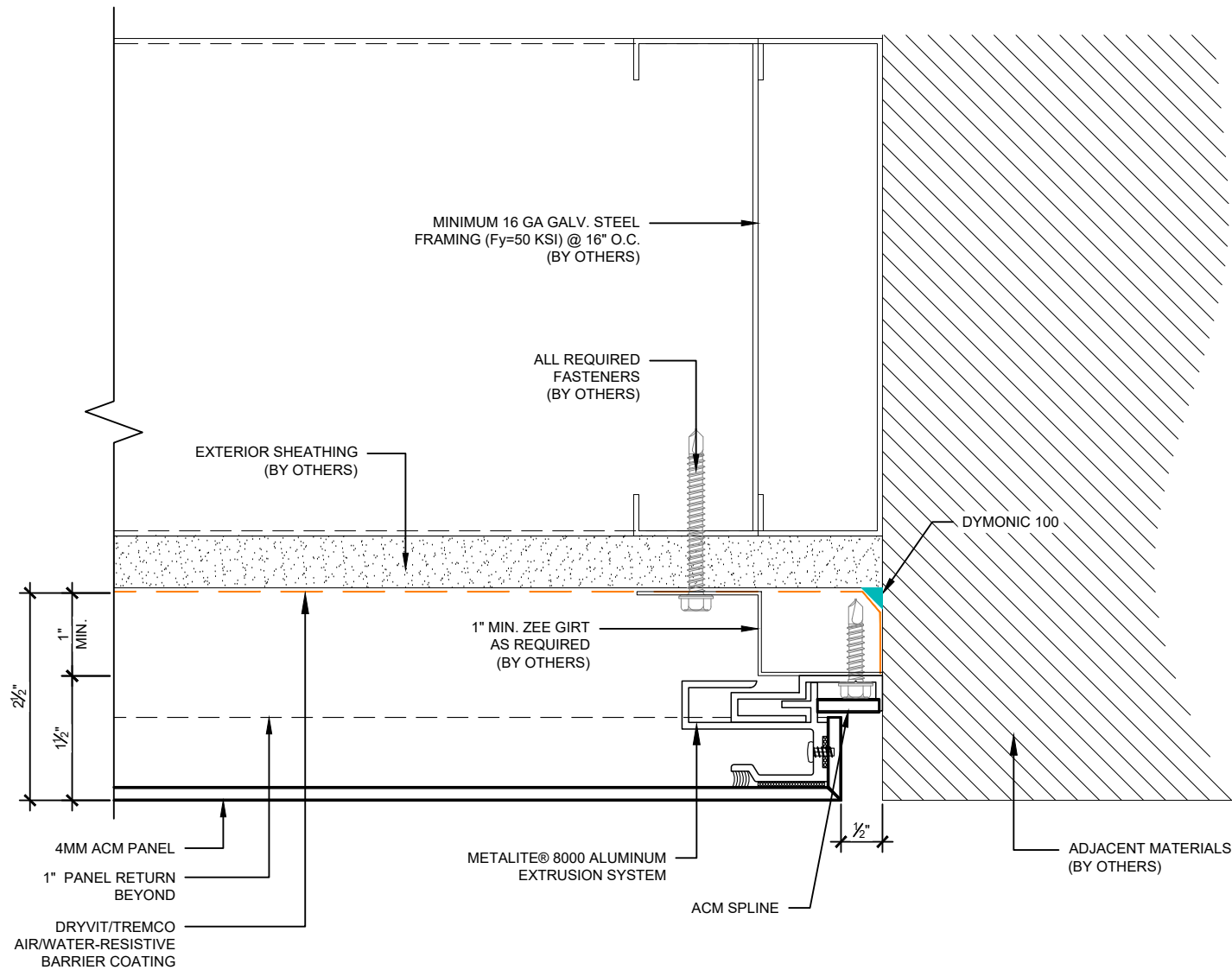
Scale: 6" = 1'-0"

Date: 5/28/2024

www.tremcocpg.com

File Name:

M8000-08



This detail is for general informational purposes, only. The project design professional determines, in its sole discretion, whether this detail or a functionally equivalent detail is best suited for the project with respect to any architecture, engineering, and design requirements, including any local building code requirements. If this document is not reviewed and the product is not approved for use by a licensed design professional, the customer agrees that the detail may contain substantive flaws requiring correction, and hereby releases Tremco CPG Inc. from any and all liability related to the design and installation of the product. This detail is subject to change without notice. Contact Tremco to ensure you have the most recent version.

Metalite® 8000

Detail: End Detail - Right Side

Drawn by: M.E.

Checked by: N/A

Scale: 6" = 1'-0"

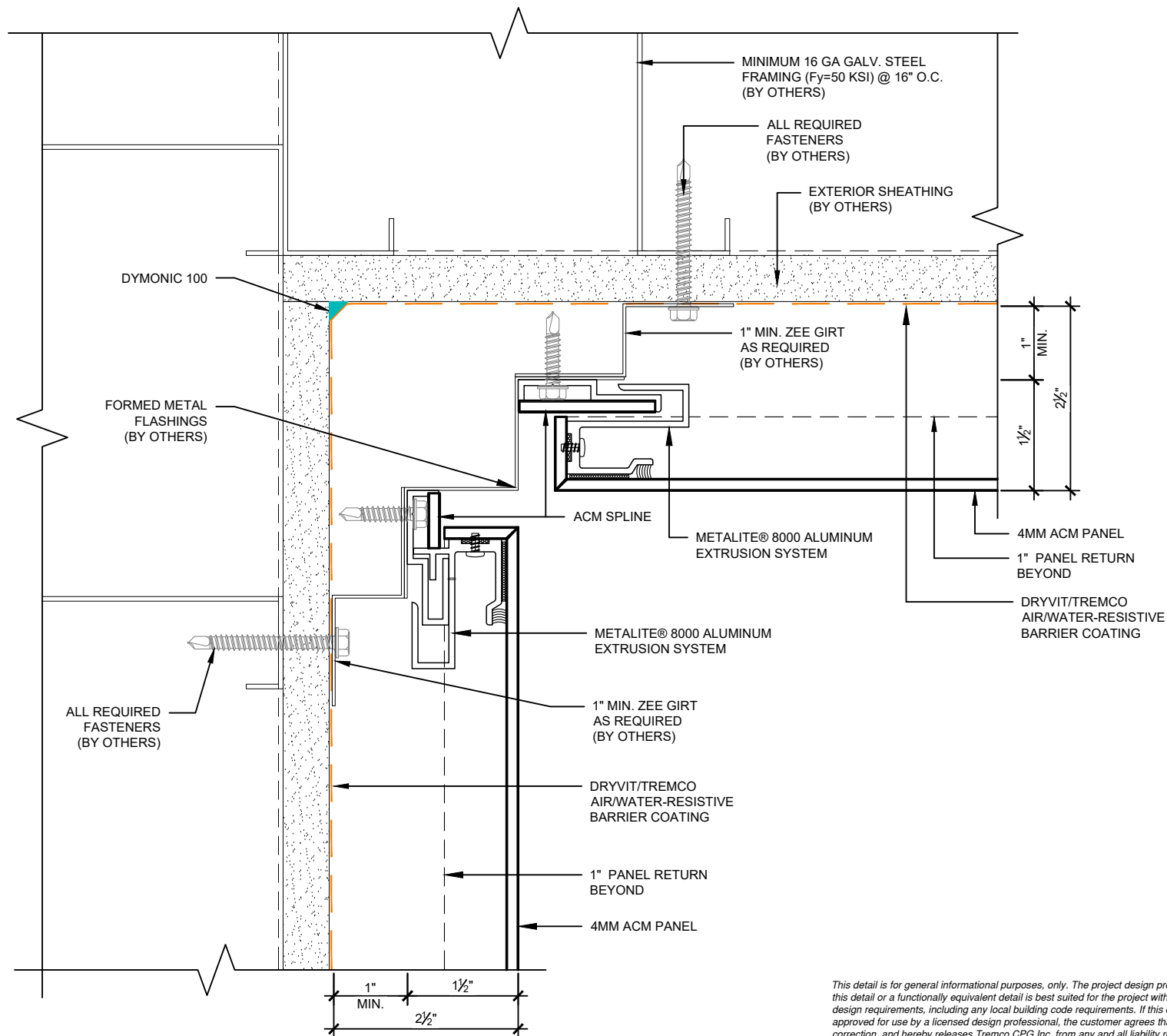
Revision #: 0

Revised by: N/A

Date: 5/28/2024

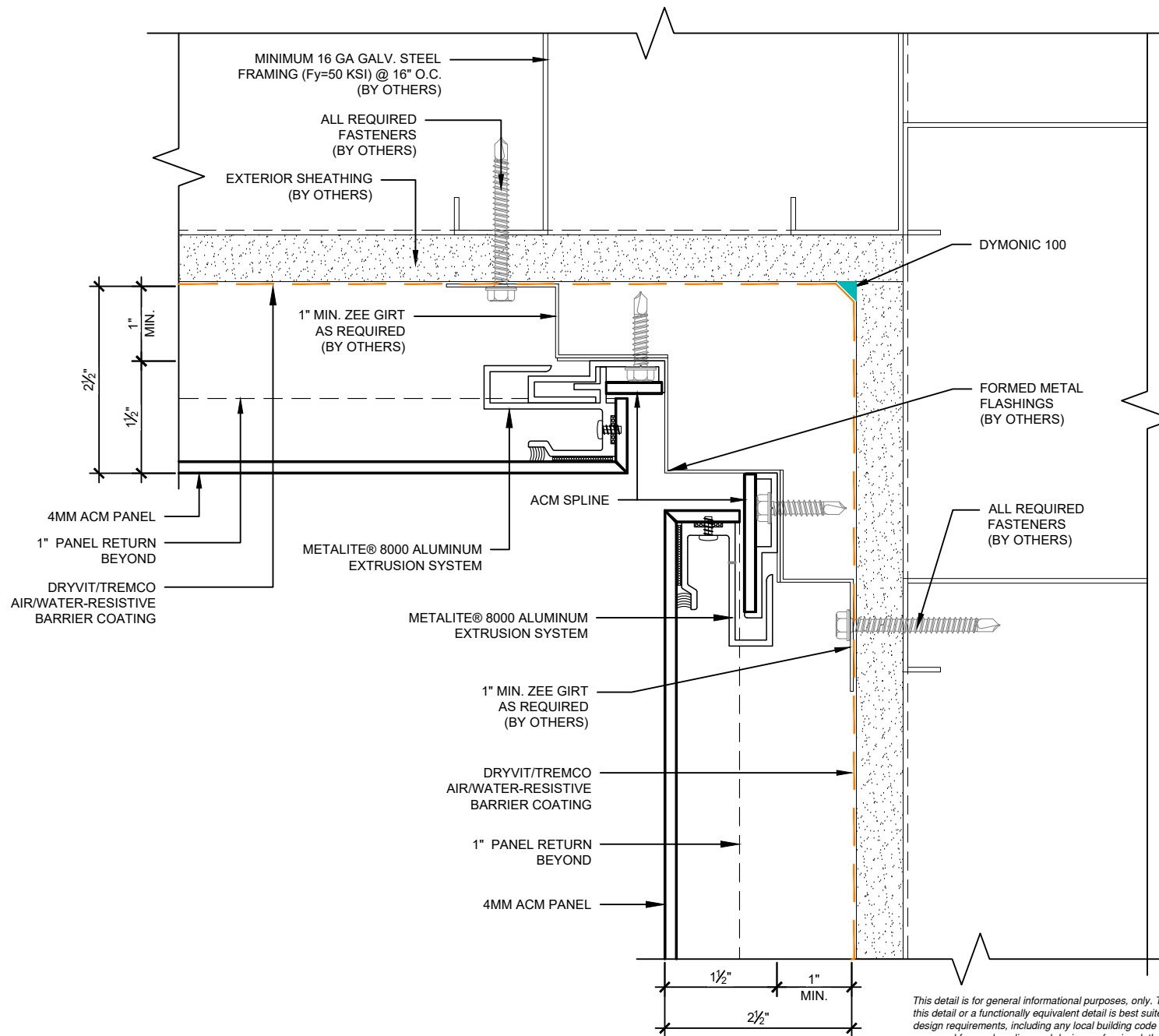
File Name:

M8000-09



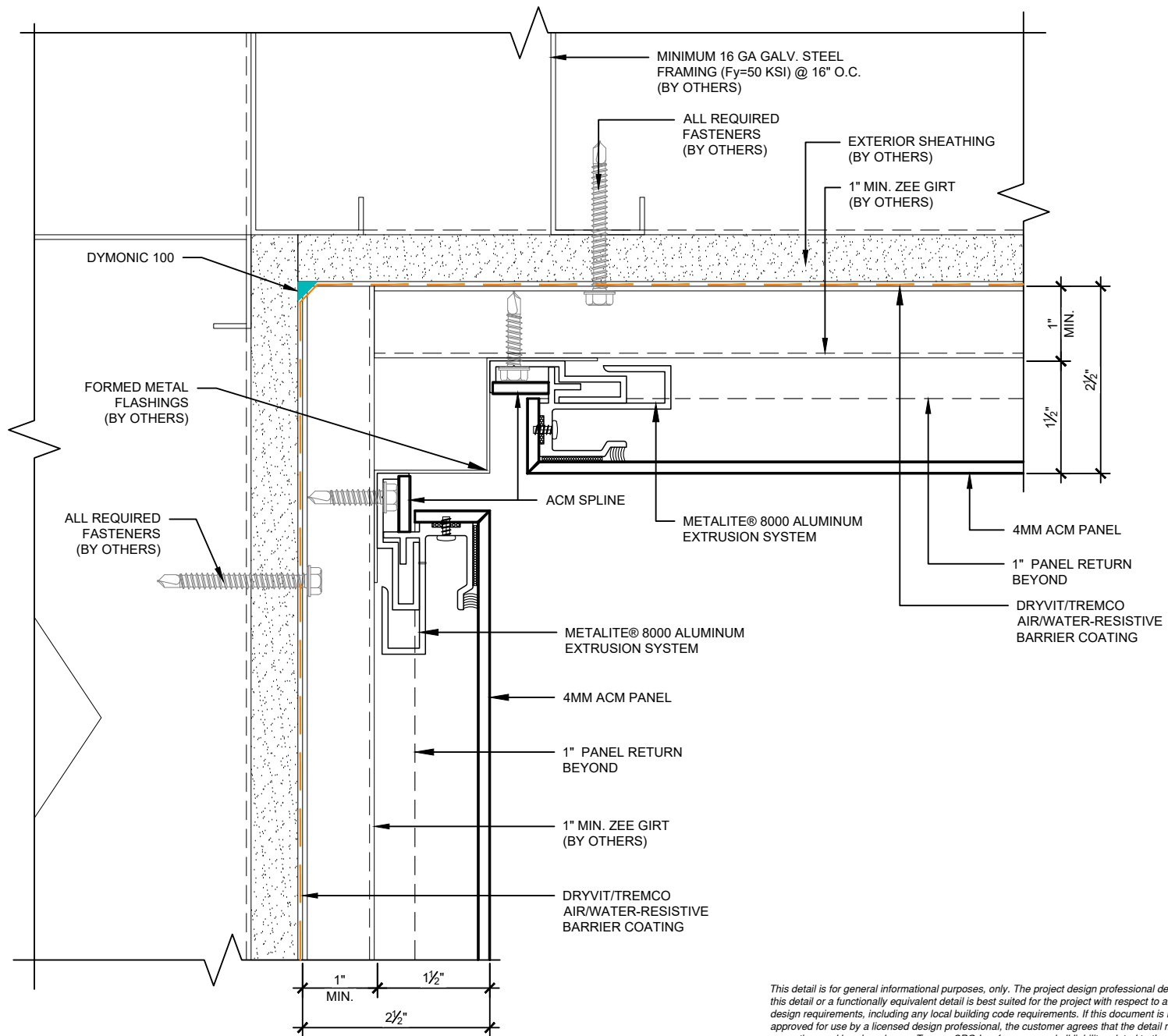
This detail is for general informational purposes, only. The project design professional determines, in its sole discretion, whether this detail or a functionally equivalent detail is best suited for the project with respect to any architecture, engineering, and design requirements, including any local building code requirements. If this document is not reviewed and the product is not approved for use by a licensed design professional, the customer agrees that the detail may contain substantive flaws requiring correction, and hereby releases Tremco CPG Inc. from any and all liability related to the design and installation of the product. This detail is subject to change without notice. Contact Tremco to ensure you have the most recent version.

Metalite® 8000



This detail is for general informational purposes, only. The project design professional determines, in its sole discretion, whether this detail or a functionally equivalent detail is best suited for the project with respect to any architecture, engineering, and design requirements, including any local building code requirements. If this document is not reviewed and the product is not approved for use by a licensed design professional, the customer agrees that the detail may contain substantive flaws requiring correction, and hereby releases Tremco CPG Inc. from any and all liability related to the design and installation of the product. This detail is subject to change without notice. Contact Tremco to ensure you have the most recent version.

Metalite® 8000



This detail is for general informational purposes, only. The project design professional determines, in its sole discretion, whether this detail or a functionally equivalent detail is best suited for the project with respect to any architecture, engineering, and design requirements, including any local building code requirements. If this document is not reviewed and the product is not approved for use by a licensed design professional, the customer agrees that the detail may contain substantive flaws requiring correction, and hereby releases Tremco CPG Inc. from any and all liability related to the design and installation of the product. This detail is subject to change without notice. Contact Tremco to ensure you have the most recent version.

Metalite® 8000

Detail: Inside Corner Section

File Name:

Drawn by: M.E.

Checked by: N/A

Scale: 6" = 1'-0"

M8000-12

Revision #: 0

Revised by: N/A

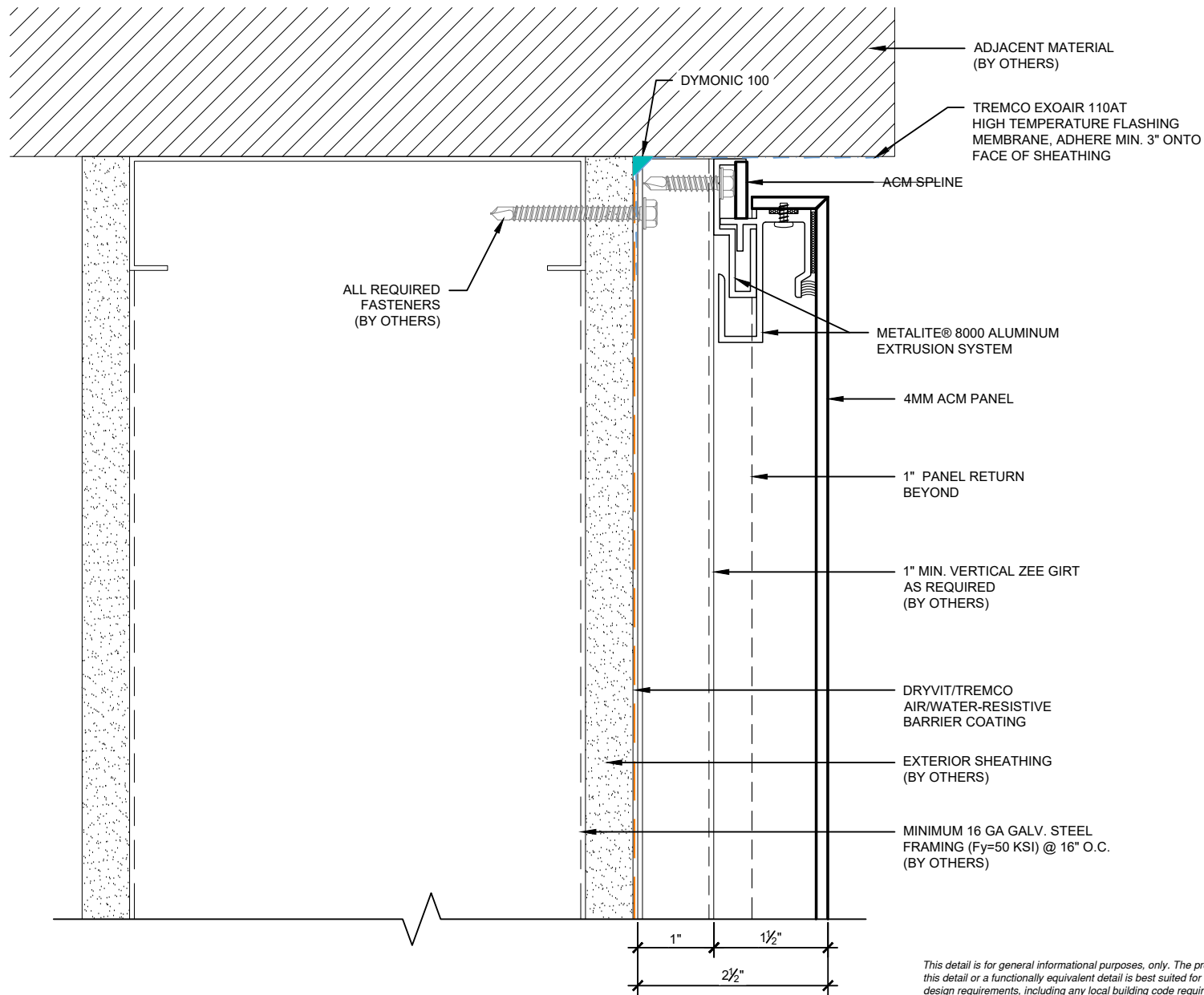
Date: 5/28/2024



Dryvit Technical Support: 800-556-7752

www.tremcocpg.com





This detail is for general informational purposes, only. The project design professional determines, in its sole discretion, whether this detail or a functionally equivalent detail is best suited for the project with respect to any architecture, engineering, and design requirements, including any local building code requirements. If this document is not reviewed and the product is not approved for use by a licensed design professional, the customer agrees that the detail may contain substantive flaws requiring correction, and hereby releases Tremco CPG Inc. from any and all liability related to the design and installation of the product. This detail is subject to change without notice. Contact Tremco to ensure you have the most recent version.

Metalite® 8000

Detail: Top Detail

Drawn by: M.E.

Revision #: 0

Checked by: N/A

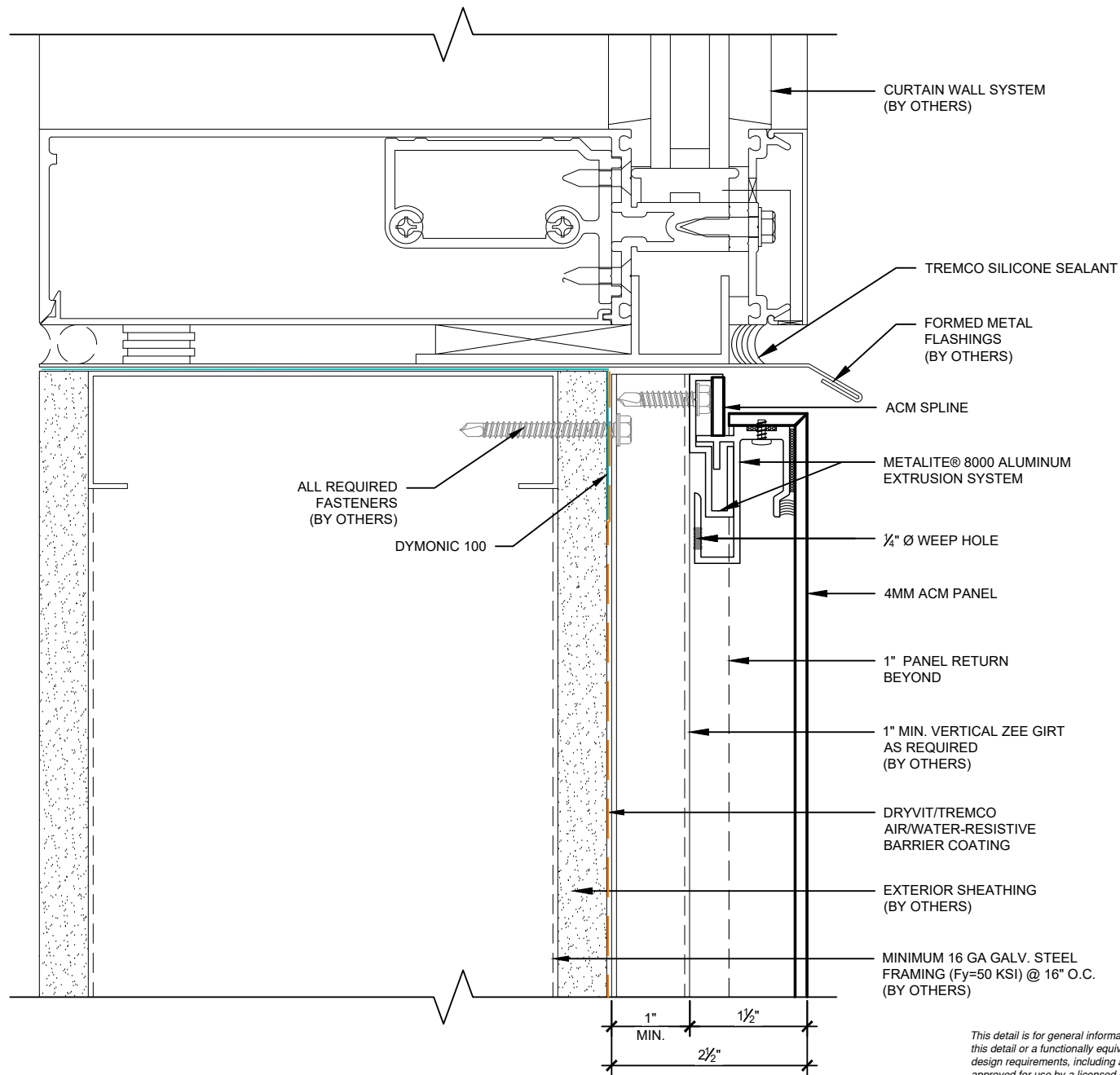
Revised by: N/A

Scale: 6" = 1'-0"

Date: 5/28/2024

File Name:

M8000-13



This detail is for general informational purposes, only. The project design professional determines, in its sole discretion, whether this detail or a functionally equivalent detail is best suited for the project with respect to any architecture, engineering, and design requirements, including any local building code requirements. If this document is not reviewed and the product is not approved for use by a licensed design professional, the customer agrees that the detail may contain substantive flaws requiring correction, and hereby releases Tremco CPG Inc. from any and all liability related to the design and installation of the product. This detail is subject to change without notice. Contact Tremco to ensure you have the most recent version.

Metalite® 8000



Detail: Window Sill

Drawn by: MOO

Revision #: 0

Checked by: N/A

Revised by: N/A

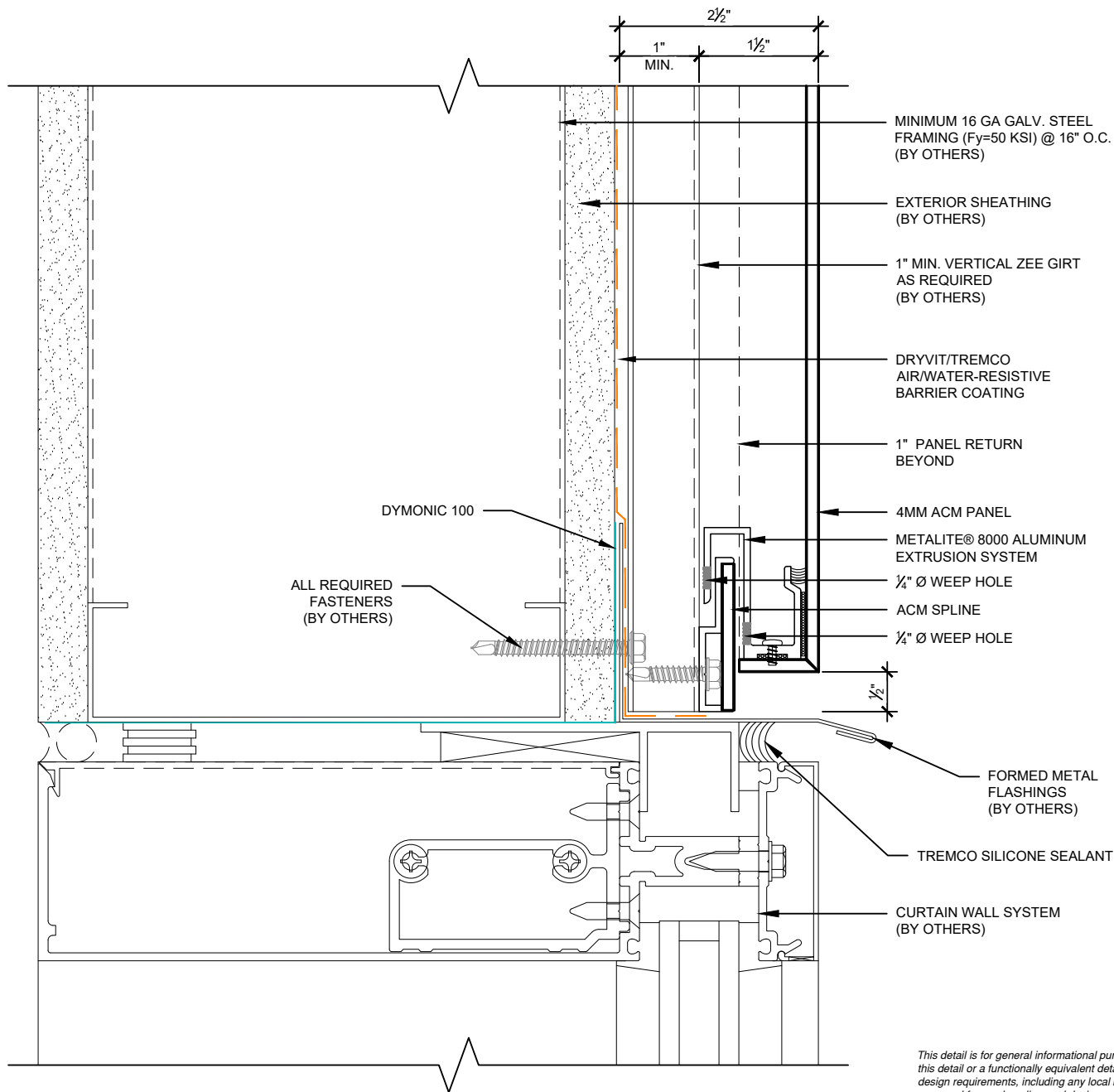
Scale: 6" = 1'-0"

Date: 5/28/2024

File Name:

M8000-WS-01





This detail is for general informational purposes, only. The project design professional determines, in its sole discretion, whether this detail or a functionally equivalent detail is best suited for the project with respect to any architecture, engineering, and design requirements, including any local building code requirements. If this document is not reviewed and the product is not approved for use by a licensed design professional, the customer agrees that the detail may contain substantive flaws requiring correction, and hereby releases Tremco CPG Inc. from any and all liability related to the design and installation of the product. This detail is subject to change without notice. Contact Tremco to ensure you have the most recent version.

Metalite® 8000



Detail: Window Head

Drawn by: M.E.

Revision #: 0

Checked by: N/A

Revised by: N/A

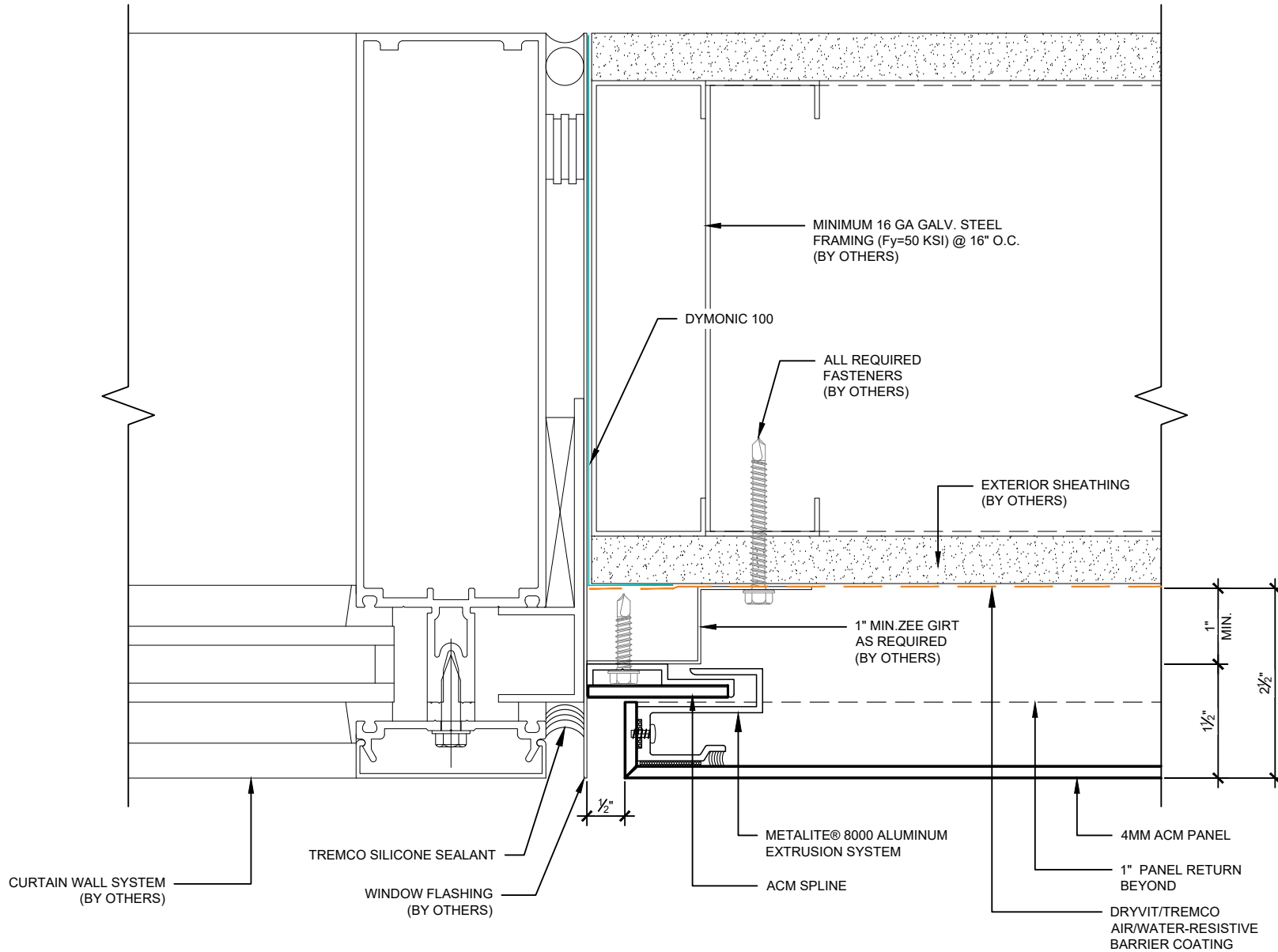
Scale: 6" = 1'-0"

Date: 5/28/2024

File Name:

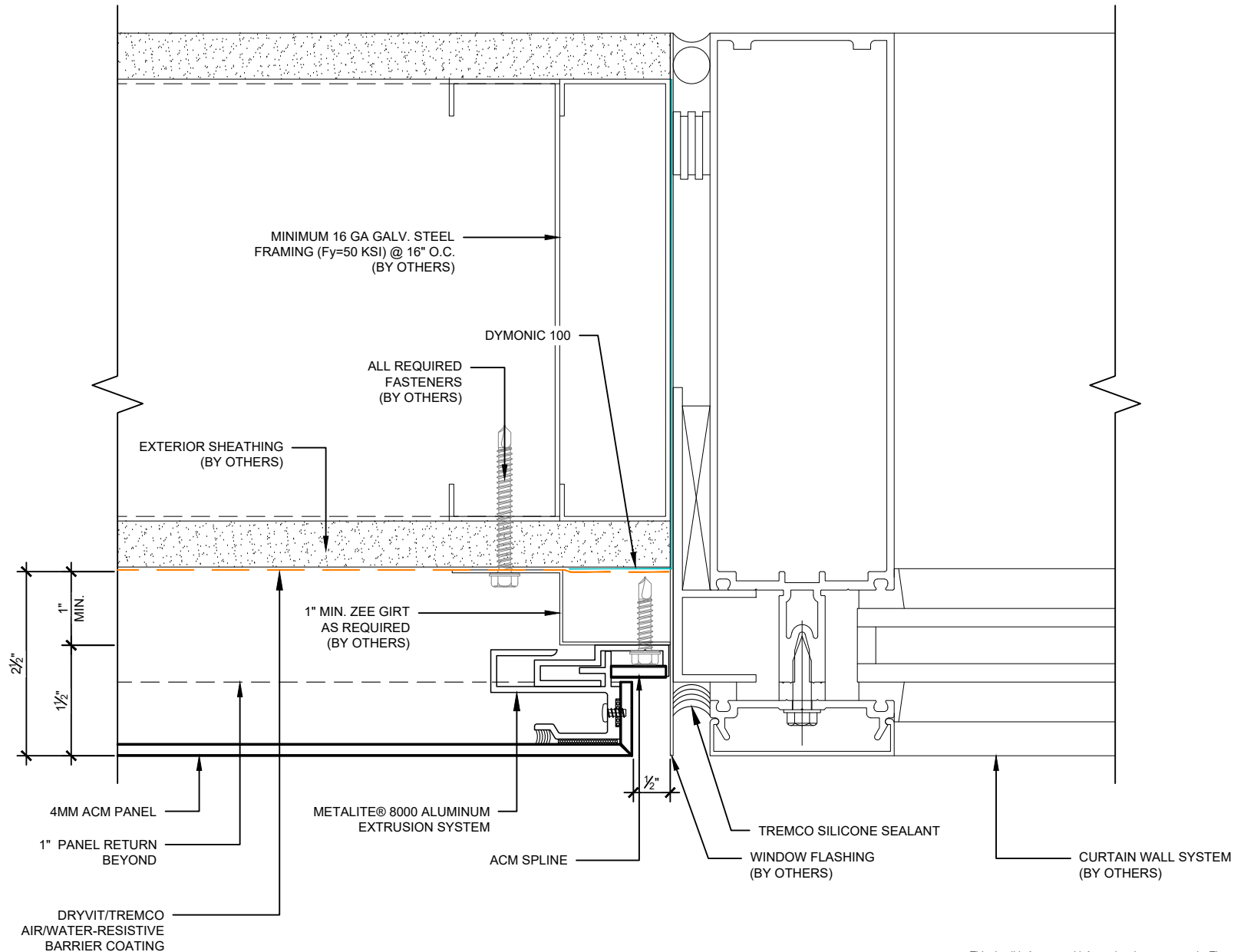
M8000-WH-01





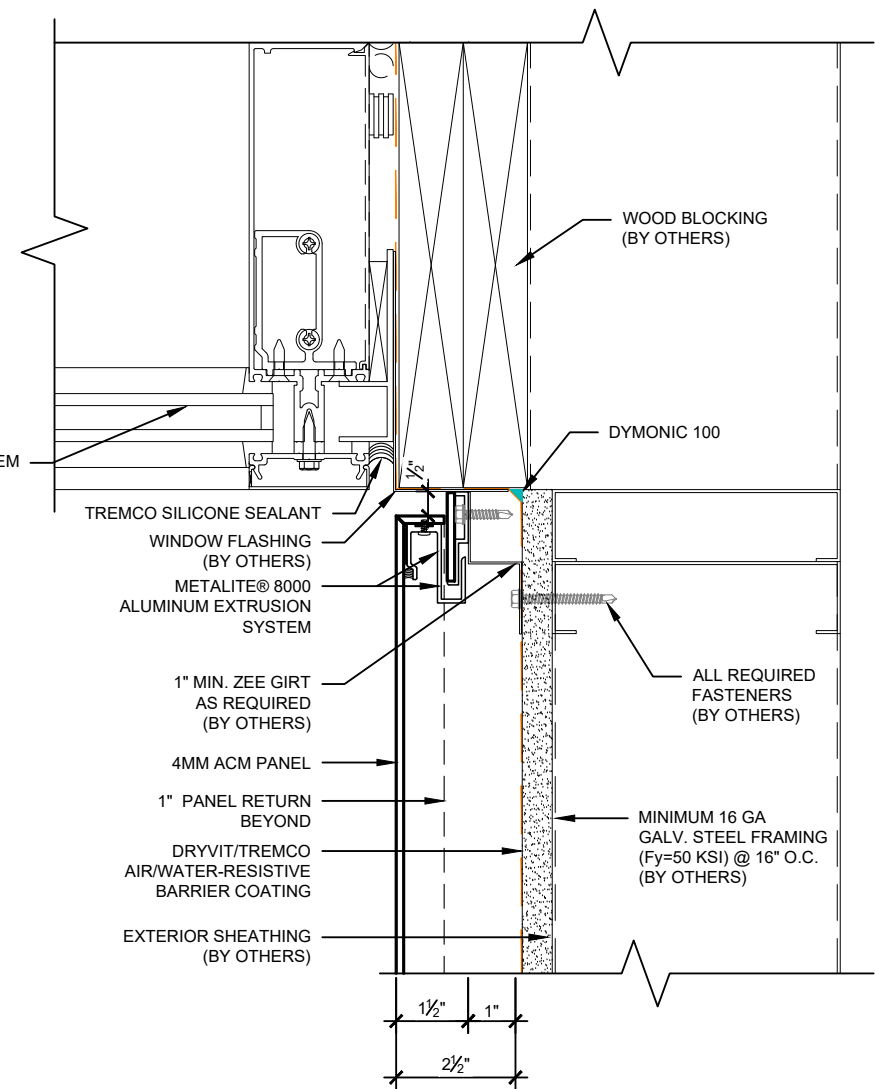
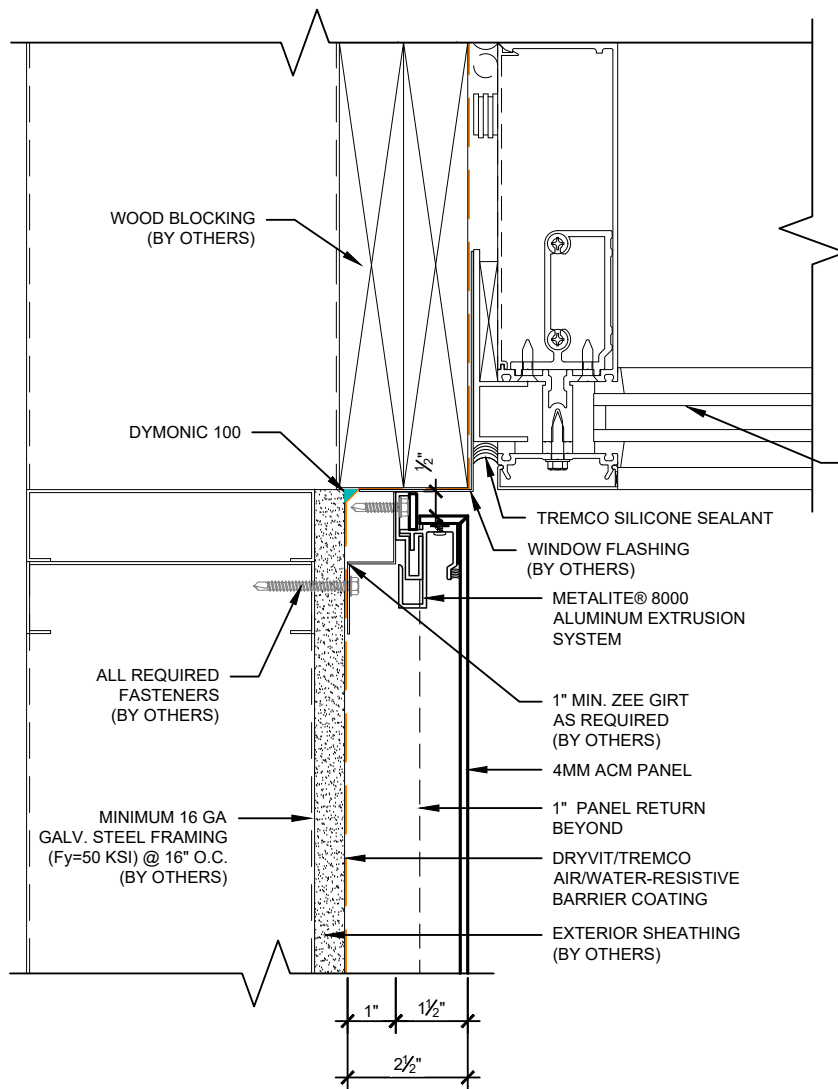
This detail is for general informational purposes, only. The project design professional determines, in its sole discretion, whether this detail or a functionally equivalent detail is best suited for the project with respect to any architecture, engineering, and design requirements, including any local building code requirements. If this document is not reviewed and the product is not approved for use by a licensed design professional, the customer agrees that the detail may contain substantive flaws requiring correction, and hereby releases Tremco CPG Inc. from any and all liability related to the design and installation of the product. This detail is subject to change without notice. Contact Tremco to ensure you have the most recent version.

Metalite® 8000



This detail is for general informational purposes, only. The project design professional determines, in its sole discretion, whether this detail or a functionally equivalent detail is best suited for the project with respect to any architecture, engineering, and design requirements, including any local building code requirements. If this document is not reviewed and the product is not approved for use by a licensed design professional, the customer agrees that the detail may contain substantive flaws requiring correction, and hereby releases Tremco CPG Inc. from any and all liability related to the design and installation of the product. This detail is subject to change without notice. Contact Tremco to ensure you have the most recent version.

Metalite® 8000



This detail is for general informational purposes, only. The project design professional determines, in its sole discretion, whether this detail or a functionally equivalent detail is best suited for the project with respect to any architecture, engineering, and design requirements, including any local building code requirements. If this document is not reviewed and the product is not approved for use by a licensed design professional, the customer agrees that the detail may contain substantive flaws requiring correction, and hereby releases Tremco CPG Inc. from any and all liability related to the design and installation of the product. This detail is subject to change without notice. Contact Tremco to ensure you have the most recent version.

Metalite® 8000

Detail: Jamb Details - Right & Left Side

Drawn by: M.E.

Checked by: N/A

Scale: 3" = 1'-0"

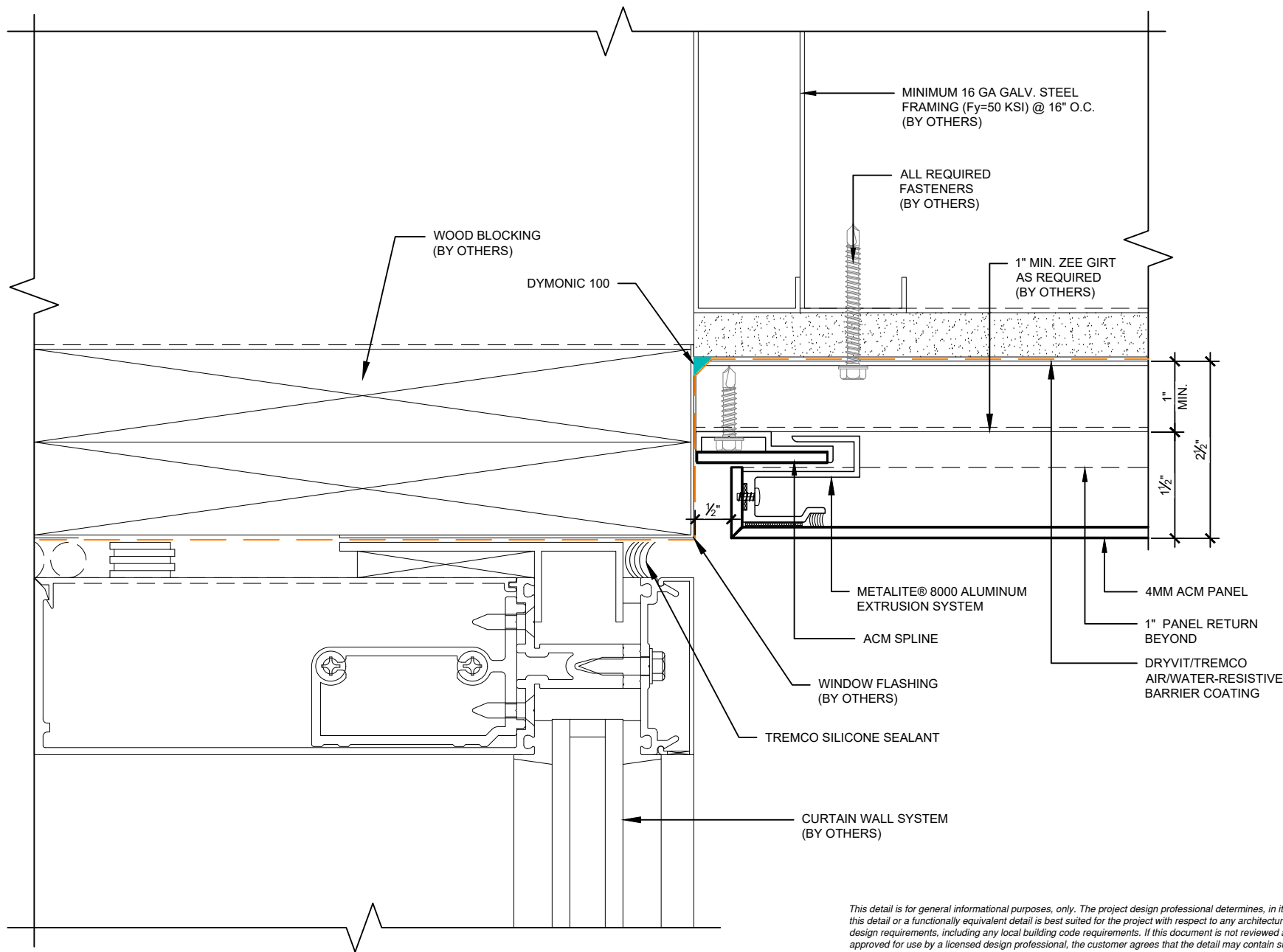
Revision #: 0

Revised by: N/A

Date: 5/28/2024

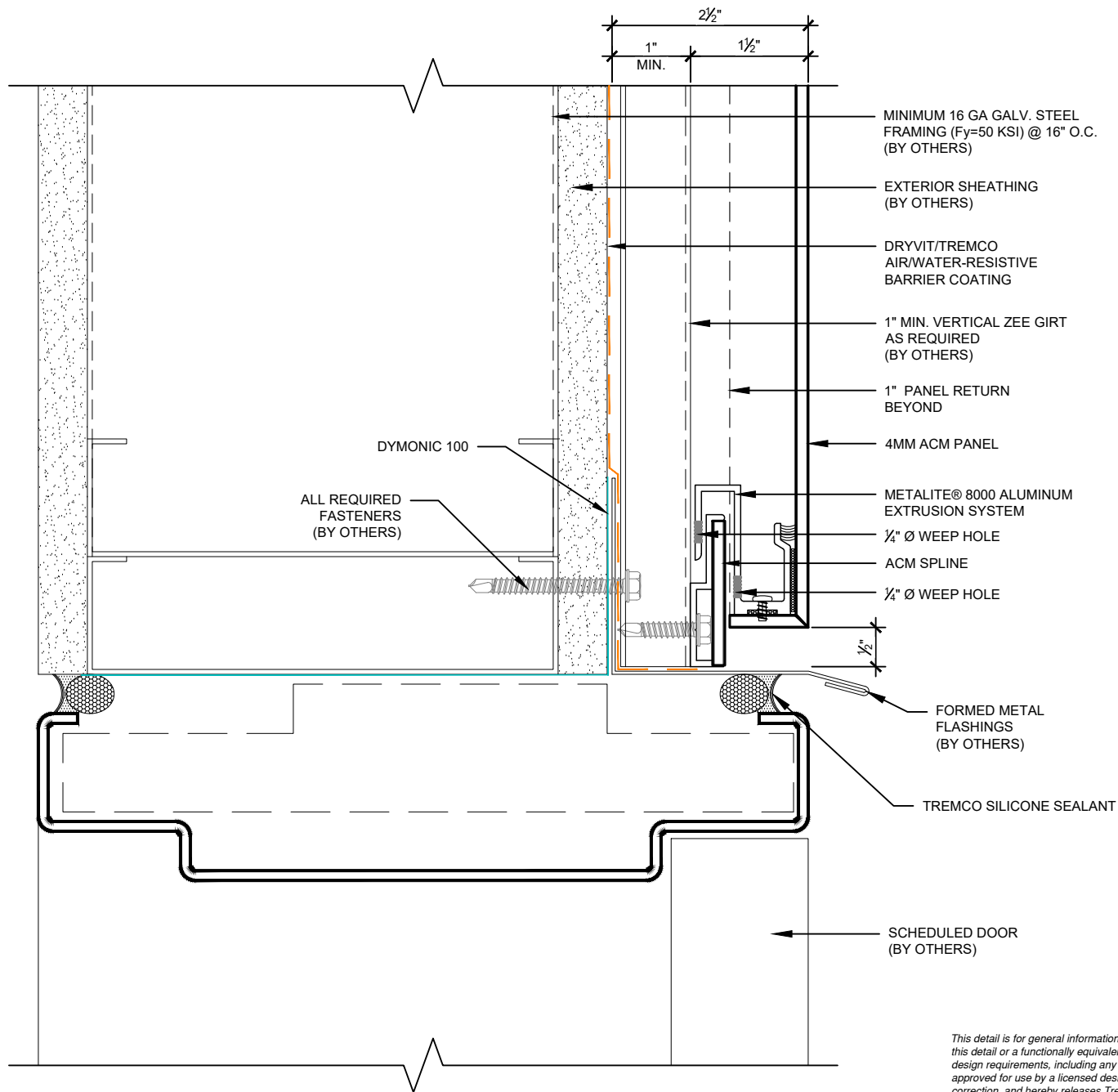
File Name:

M8000-WJ-03



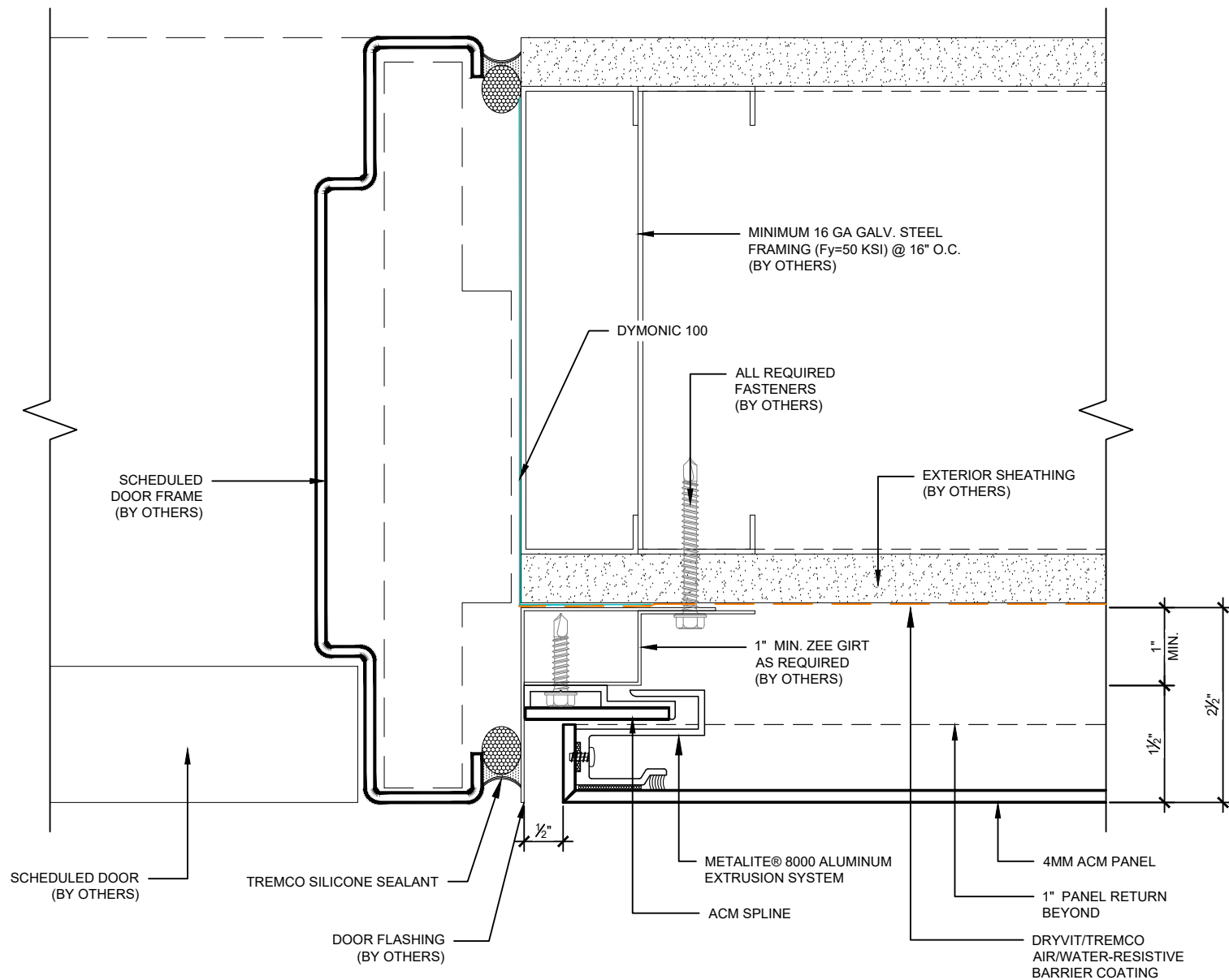
This detail is for general informational purposes, only. The project design professional determines, in its sole discretion, whether this detail or a functionally equivalent detail is best suited for the project with respect to any architecture, engineering, and design requirements, including any local building code requirements. If this document is not reviewed and the product is not approved for use by a licensed design professional, the customer agrees that the detail may contain substantive flaws requiring correction, and hereby releases Tremco CPG Inc. from any and all liability related to the design and installation of the product. This detail is subject to change without notice. Contact Tremco to ensure you have the most recent version.

Metalite® 8000



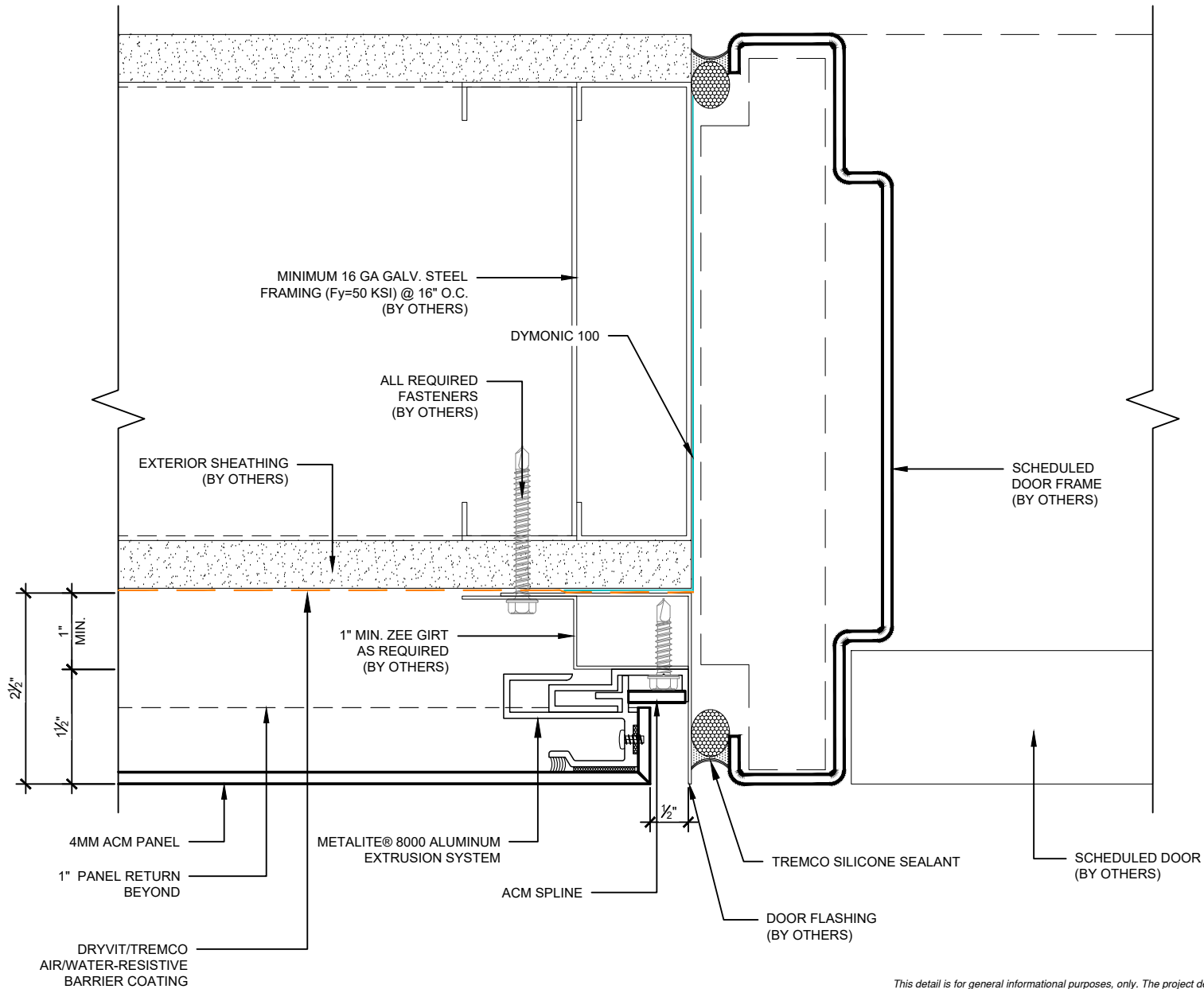
This detail is for general informational purposes, only. The project design professional determines, in its sole discretion, whether this detail or a functionally equivalent detail is best suited for the project with respect to any architecture, engineering, and design requirements, including any local building code requirements. If this document is not reviewed and the product is not approved for use by a licensed design professional, the customer agrees that the detail may contain substantive flaws requiring correction, and hereby releases Tremco CPG Inc. from any and all liability related to the design and installation of the product. This detail is subject to change without notice. Contact Tremco to ensure you have the most recent version.

Metalite® 8000



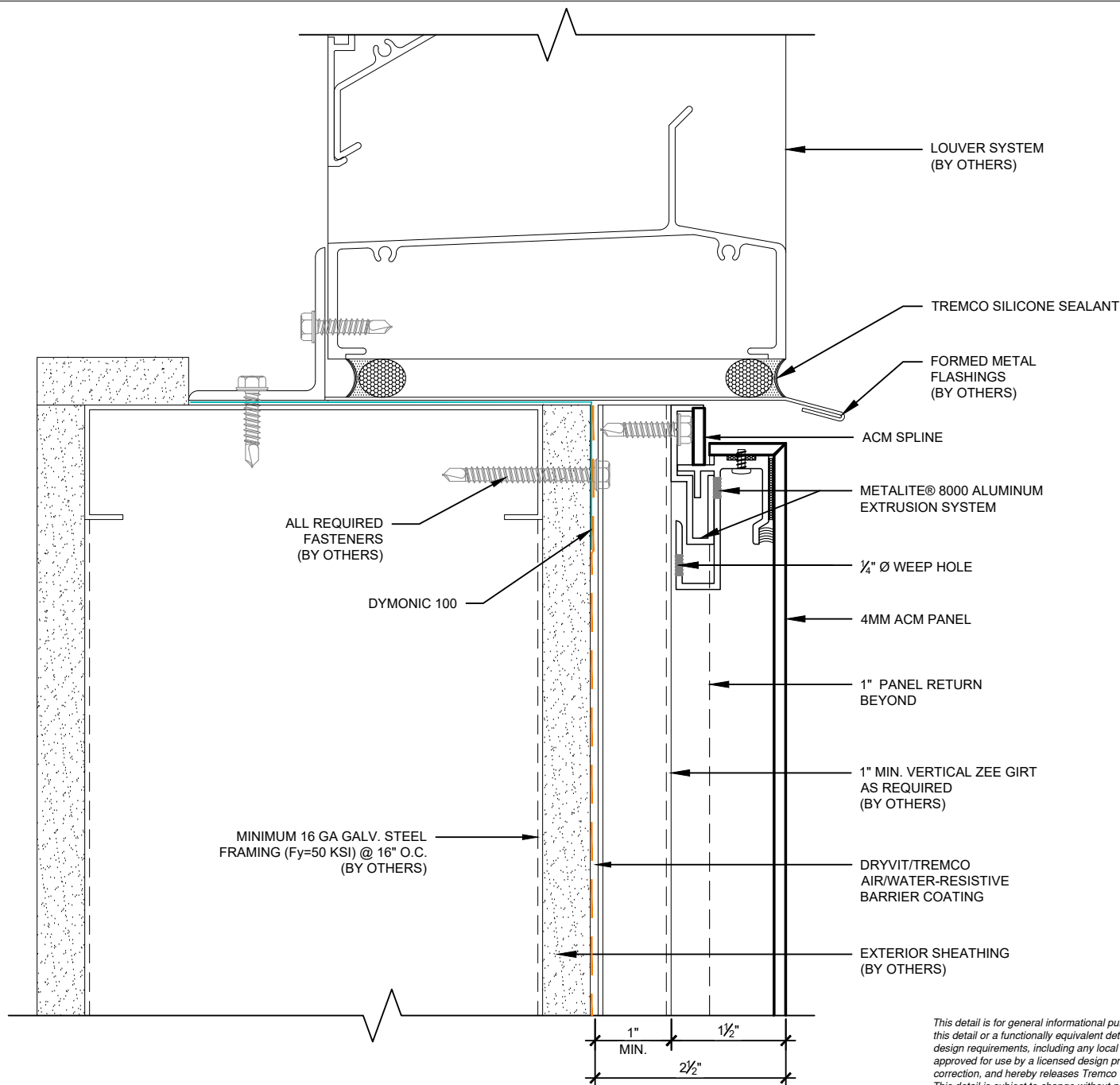
This detail is for general informational purposes, only. The project design professional determines, in its sole discretion, whether this detail or a functionally equivalent detail is best suited for the project with respect to any architecture, engineering, and design requirements, including any local building code requirements. If this document is not reviewed and the product is not approved for use by a licensed design professional, the customer agrees that the detail may contain substantive flaws requiring correction, and hereby releases Tremco CPG Inc. from any and all liability related to the design and installation of the product. This detail is subject to change without notice. Contact Tremco to ensure you have the most recent version.

Metalite® 8000



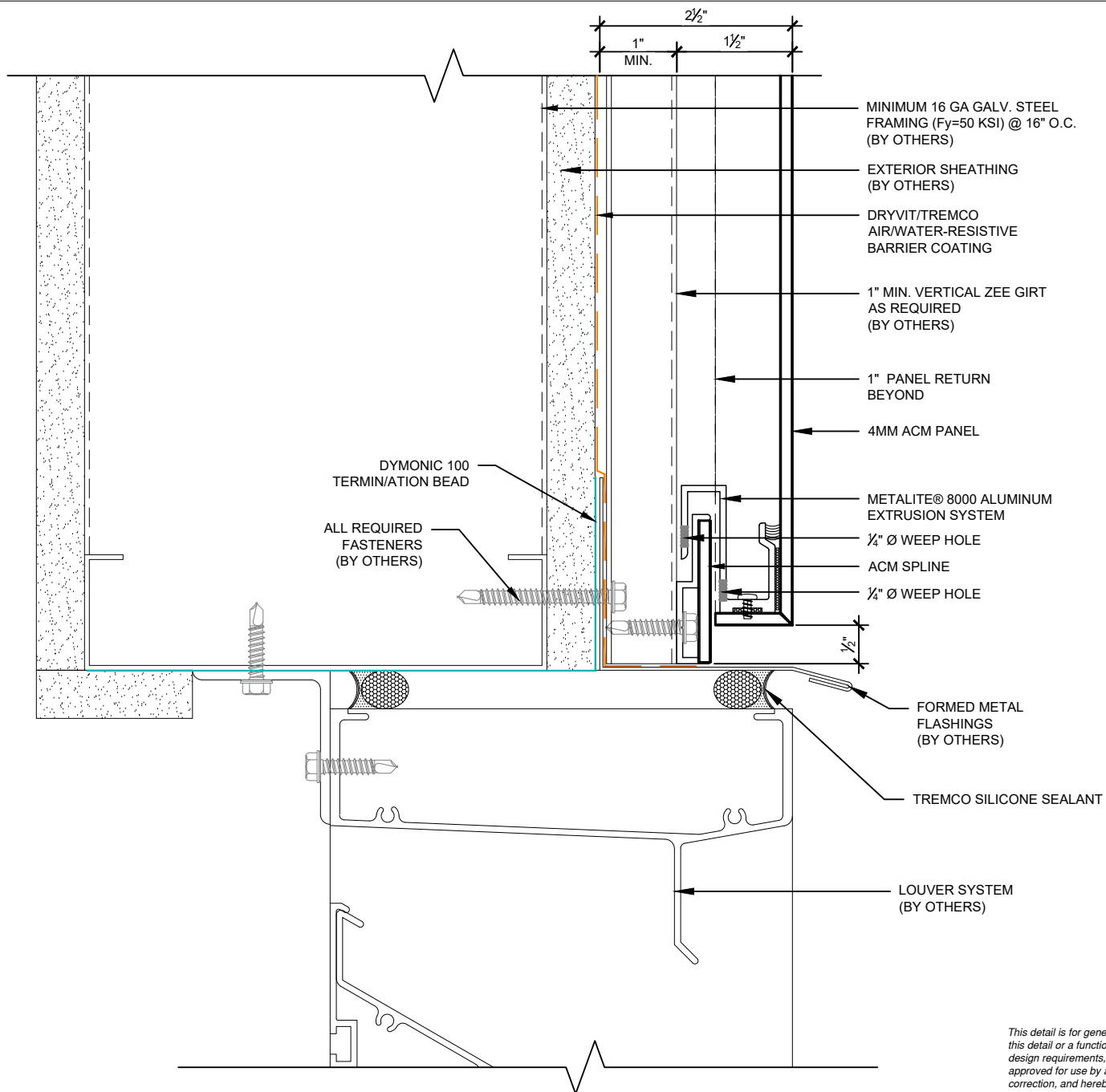
This detail is for general informational purposes, only. The project design professional determines, in its sole discretion, whether this detail or a functionally equivalent detail is best suited for the project with respect to any architecture, engineering, and design requirements, including any local building code requirements. If this document is not reviewed and the product is not approved for use by a licensed design professional, the customer agrees that the detail may contain substantive flaws requiring correction, and hereby releases Tremco CPG Inc. from any and all liability related to the design and installation of the product. This detail is subject to change without notice. Contact Tremco to ensure you have the most recent version.

Metalite® 8000



This detail is for general informational purposes, only. The project design professional determines, in its sole discretion, whether this detail or a functionally equivalent detail is best suited for the project with respect to any architecture, engineering, and design requirements, including any local building code requirements. If this document is not reviewed and the product is not approved for use by a licensed design professional, the customer agrees that the detail may contain substantive flaws requiring correction, and hereby releases Tremco CPG Inc. from any and all liability related to the design and installation of the product. This detail is subject to change without notice. Contact Tremco to ensure you have the most recent version.

Metalite® 8000



This detail is for general informational purposes, only. The project design professional determines, in its sole discretion, whether this detail or a functionally equivalent detail is best suited for the project with respect to any architecture, engineering, and design requirements, including any local building code requirements. If this document is not reviewed and the product is not approved for use by a licensed design professional, the customer agrees that the detail may contain substantive flaws requiring correction, and hereby releases Tremco CPG Inc. from any and all liability related to the design and installation of the product. This detail is subject to change without notice. Contact Tremco to ensure you have the most recent version.

Metalite® 8000

Detail: Louver Head

Drawn by: M.E.

Revision #: 0

Checked by: N/A

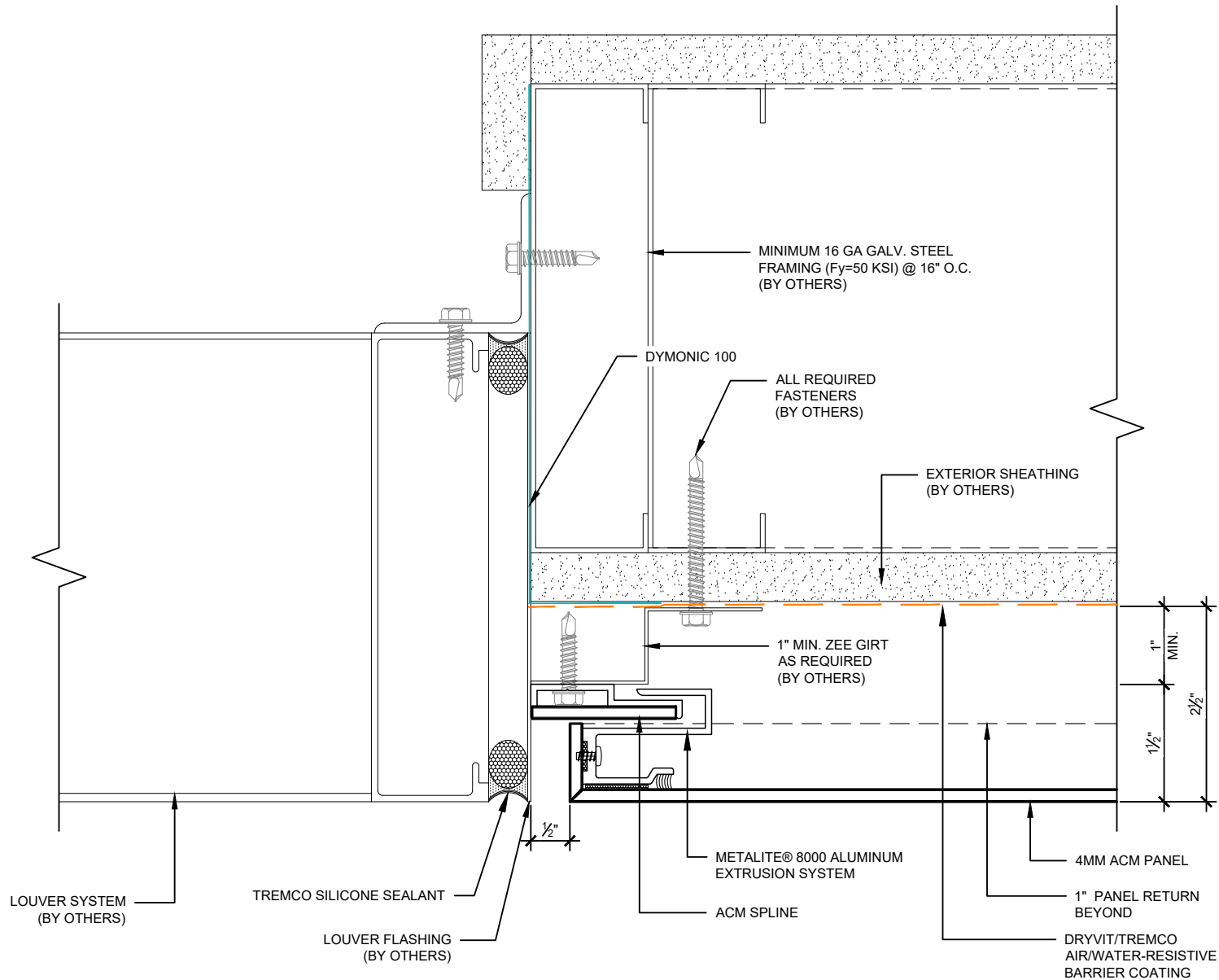
Revised by: N/A

Scale: 6" = 1'-0"

Date: 5/28/2024

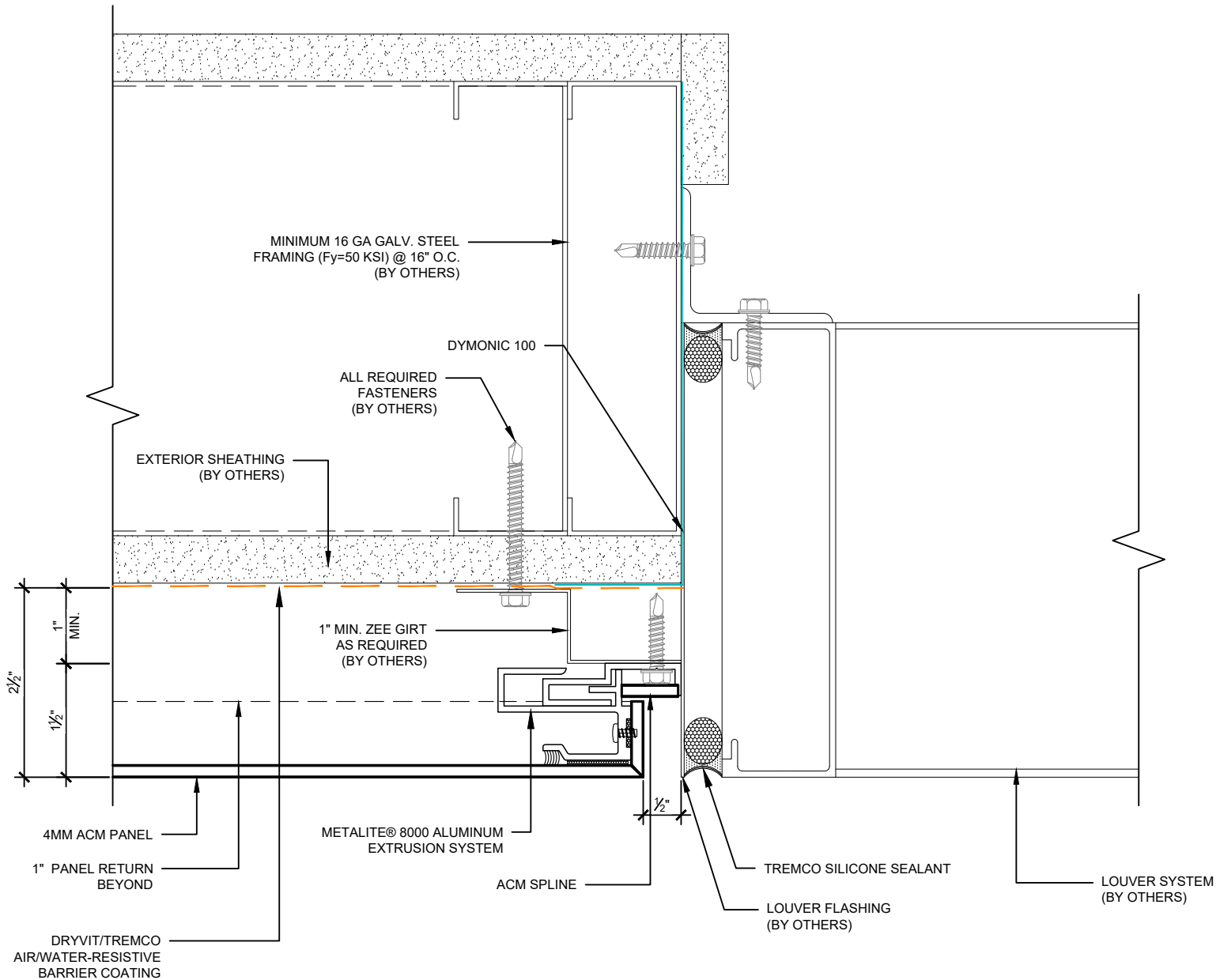
File Name:

M8000-LH-01



This detail is for general informational purposes, only. The project design professional determines, in its sole discretion, whether this detail or a functionally equivalent detail is best suited for the project with respect to any architecture, engineering, and design requirements, including any local building code requirements. If this document is not reviewed and the product is not approved for use by a licensed design professional, the customer agrees that the detail may contain substantive flaws requiring correction, and hereby releases Tremco CPG Inc. from any and all liability related to the design and installation of the product. This detail is subject to change without notice. Contact Tremco to ensure you have the most recent version.

Metalite® 8000



This detail is for general informational purposes, only. The project design professional determines, in its sole discretion, whether this detail or a functionally equivalent detail is best suited for the project with respect to any architecture, engineering, and design requirements, including any local building code requirements. If this document is not reviewed and the product is not approved for use by a licensed design professional, the customer agrees that the detail may contain substantive flaws requiring correction, and hereby releases Tremco CPG Inc. from any and all liability related to the design and installation of the product. This detail is subject to change without notice. Contact Tremco to ensure you have the most recent version.

Metalite® 8000

Detail: Louver Jamb - Right Side

Drawn by: M.E.

Checked by: N/A

Scale: 6" = 1'-0"

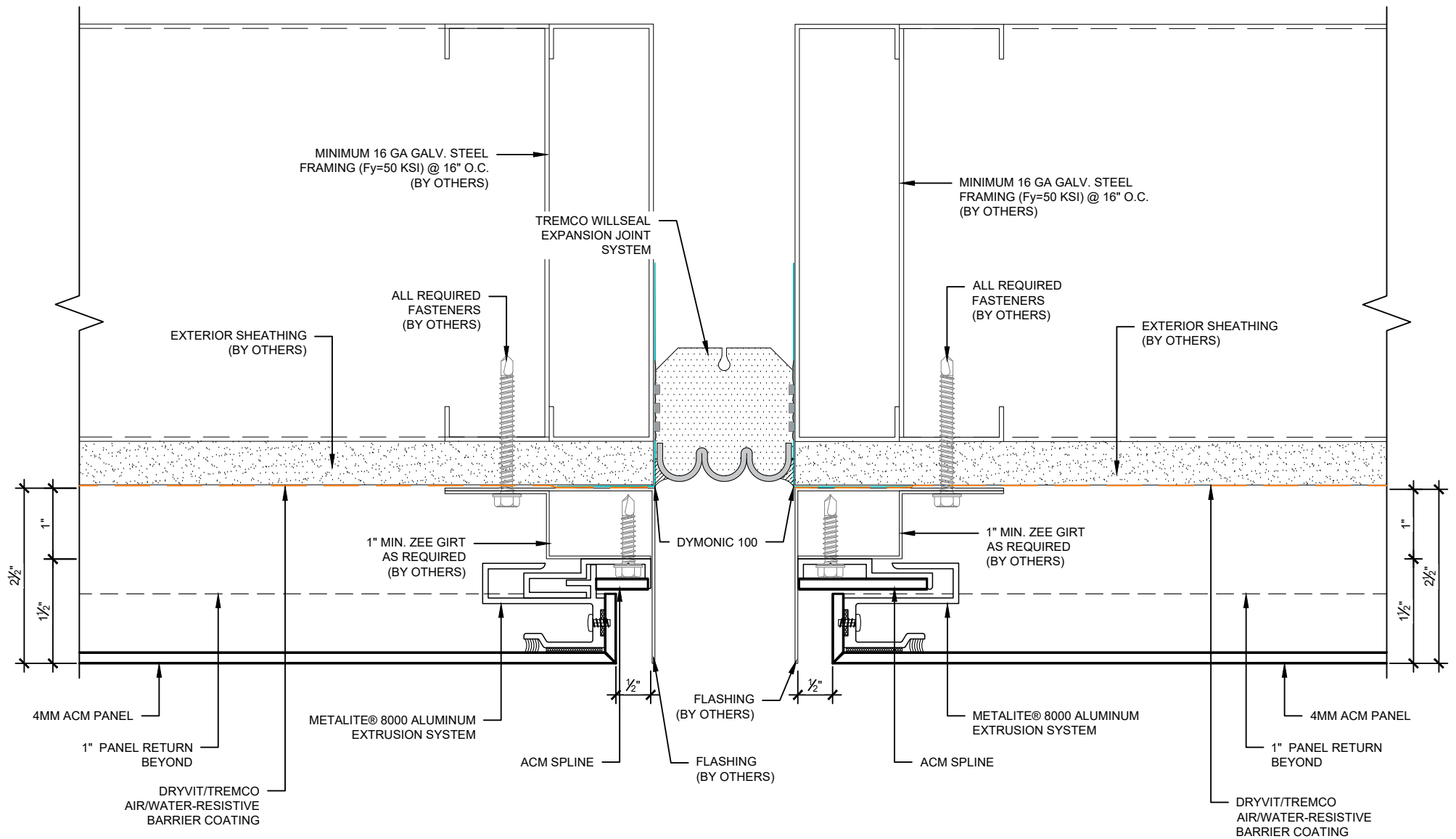
Revision #: 0

Revised by: N/A

Date: 5/28/2024

File Name:

M8000-LJ-02



This detail is for general informational purposes, only. The project design professional determines, in its sole discretion, whether this detail or a functionally equivalent detail is best suited for the project with respect to any architecture, engineering, and design requirements, including any local building code requirements. If this document is not reviewed and the product is not approved for use by a licensed design professional, the customer agrees that the detail may contain substantive flaws requiring correction, and hereby releases Tremco CPG Inc. from any and all liability related to the design and installation of the product. This detail is subject to change without notice. Contact Tremco to ensure you have the most recent version.

Metalite® 8000



Detail: Expansion Double Joint

Drawn by: M.E.

Checked by: N/A

Scale: 6" = 1'-0"

Revision #: 0

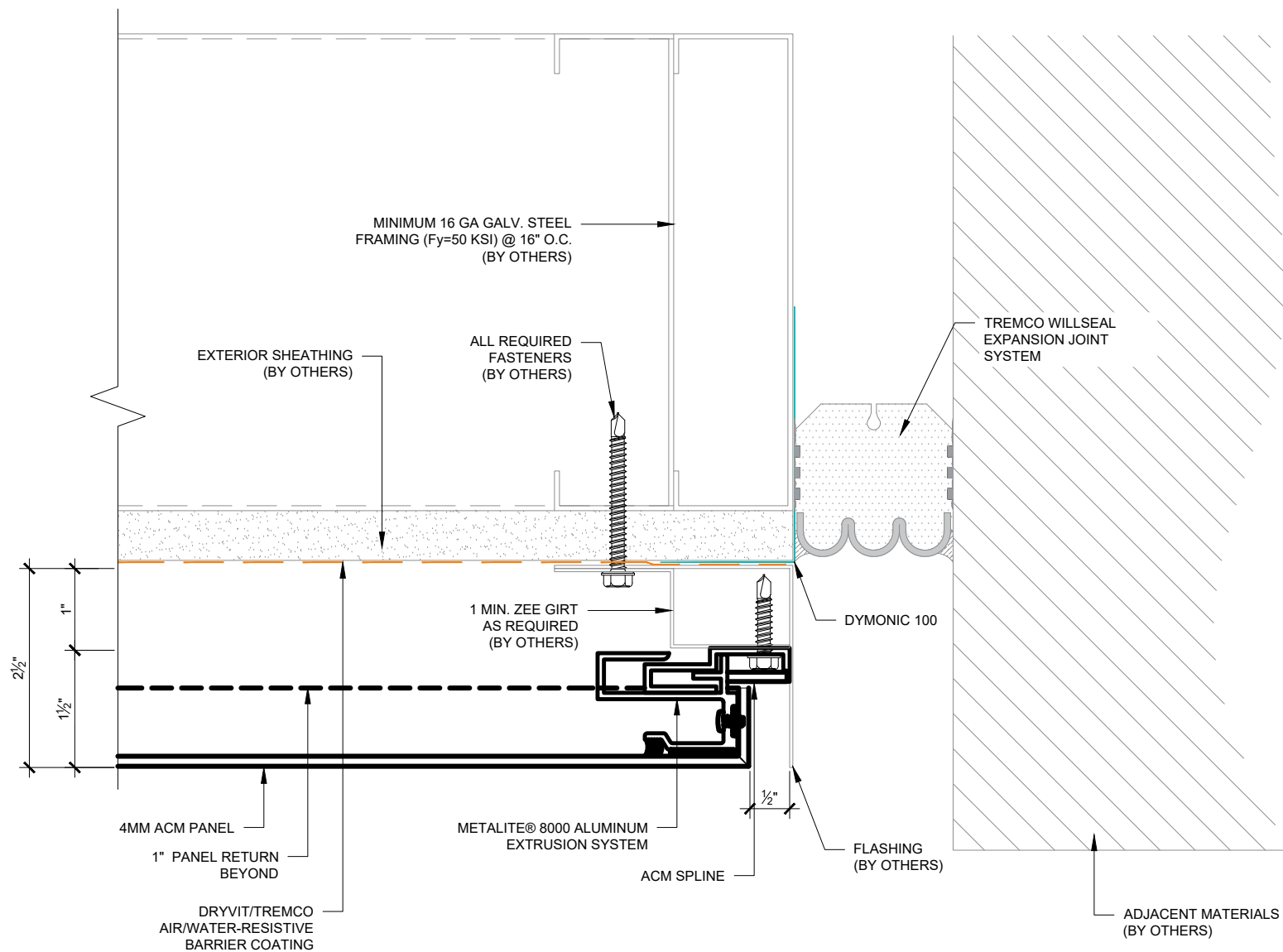
Revised by: N/A

Date: 5/28/2024

File Name:

EX-M8000-DJ-01





This detail is for general informational purposes, only. The project design professional determines, in its sole discretion, whether this detail or a functionally equivalent detail is best suited for the project with respect to any architecture, engineering, and design requirements, including any local building code requirements. If this document is not reviewed and the product is not approved for use by a licensed design professional, the customer agrees that the detail may contain substantive flaws requiring correction, and hereby releases Tremco CPG Inc. from any and all liability related to the design and installation of the product. This detail is subject to change without notice. Contact Tremco to ensure you have the most recent version.

Metalite® 8000

Detail: Expansion Joint - Right Side

Drawn by: M.E.

Checked by: N/A

Scale: 6" = 1'-0"

Revision #: 0

Revised by: N/A

Date: 5/28/2024

File Name:

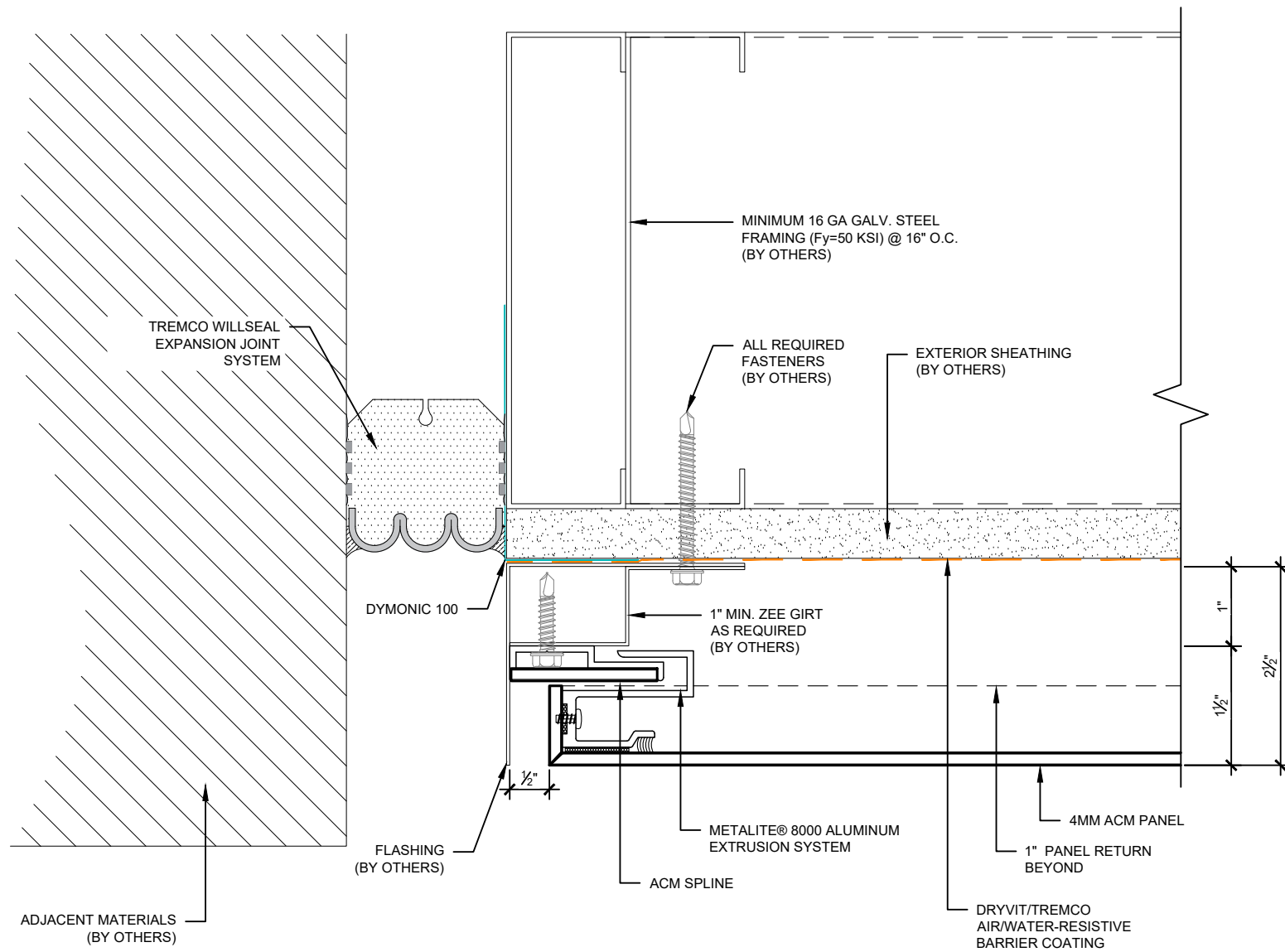
EX-M8000-01



Dryvit Technical Support: 800-556-7752

www.tremcocpg.com





This detail is for general informational purposes, only. The project design professional determines, in its sole discretion, whether this detail or a functionally equivalent detail is best suited for the project with respect to any architecture, engineering, and design requirements, including any local building code requirements. If this document is not reviewed and the product is not approved for use by a licensed design professional, the customer agrees that the detail may contain substantive flaws requiring correction, and hereby releases Tremco CPG Inc. from any and all liability related to the design and installation of the product. This detail is subject to change without notice. Contact Tremco to ensure you have the most recent version.

Metalite® 8000

Detail: Expansion Joint - Left Side

File Name:

Drawn by: M.E.

Checked by: N/A

Scale: 6" = 1'-0"

EX-M8000-02

Revision #: 0

Revised by: N/A

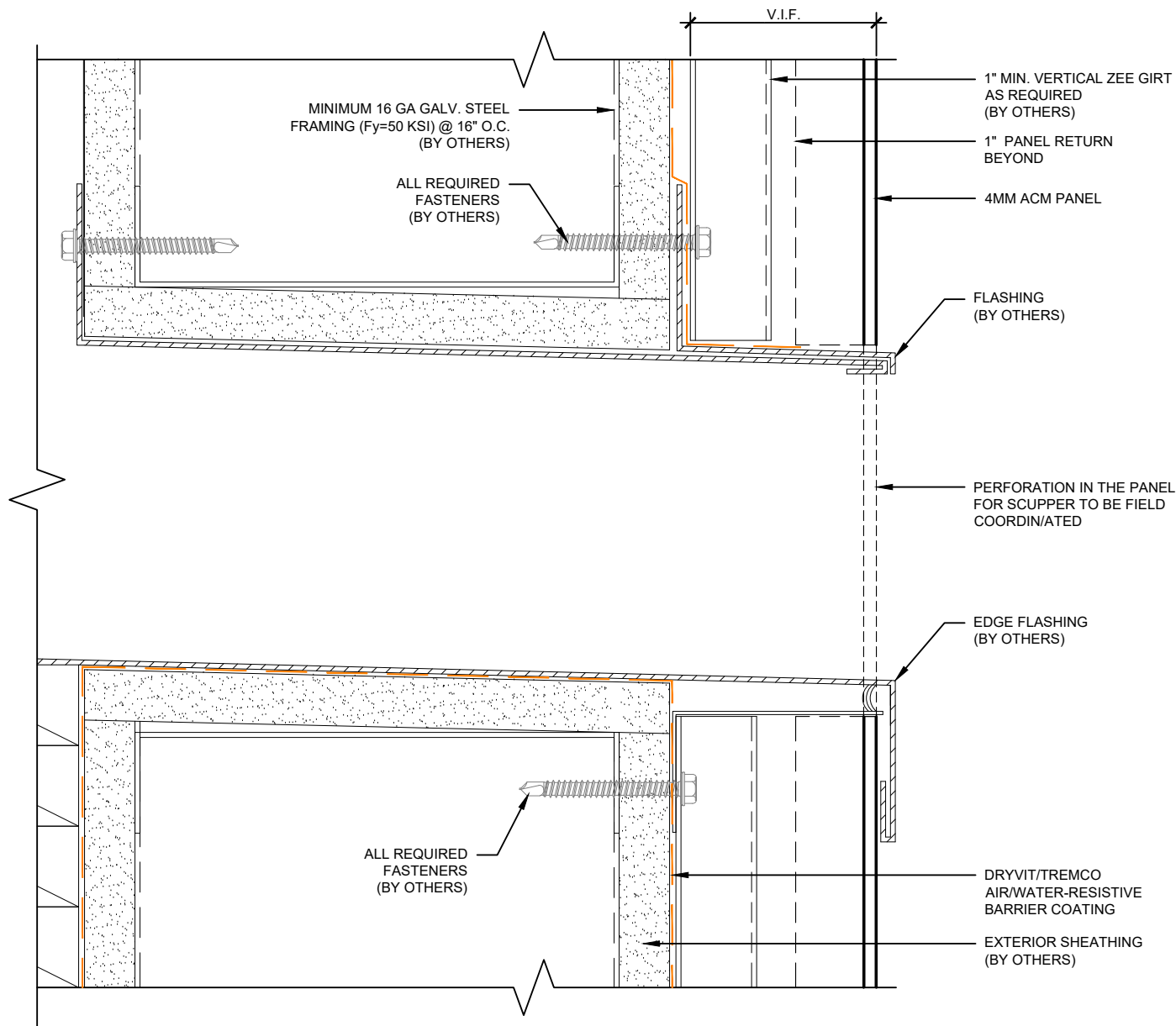
Date: 5/28/2024



Dryvit Technical Support: 800-556-7752

www.tremcocpg.com





This detail is for general informational purposes, only. The project design professional determines, in its sole discretion, whether this detail or a functionally equivalent detail is best suited for the project with respect to any architecture, engineering, and design requirements, including any local building code requirements. If this document is not reviewed and the product is not approved for use by a licensed design professional, the customer agrees that the detail may contain substantive flaws requiring correction, and hereby releases Tremco CPG Inc. from any and all liability related to the design and installation of the product. This detail is subject to change without notice. Contact Tremco to ensure you have the most recent version.

Metalite® 8000



Detail: Overflow Scupper Detail

Drawn by: M.E.

Checked by: N/A

Scale: 6" = 1'-0"

Revision #: 0

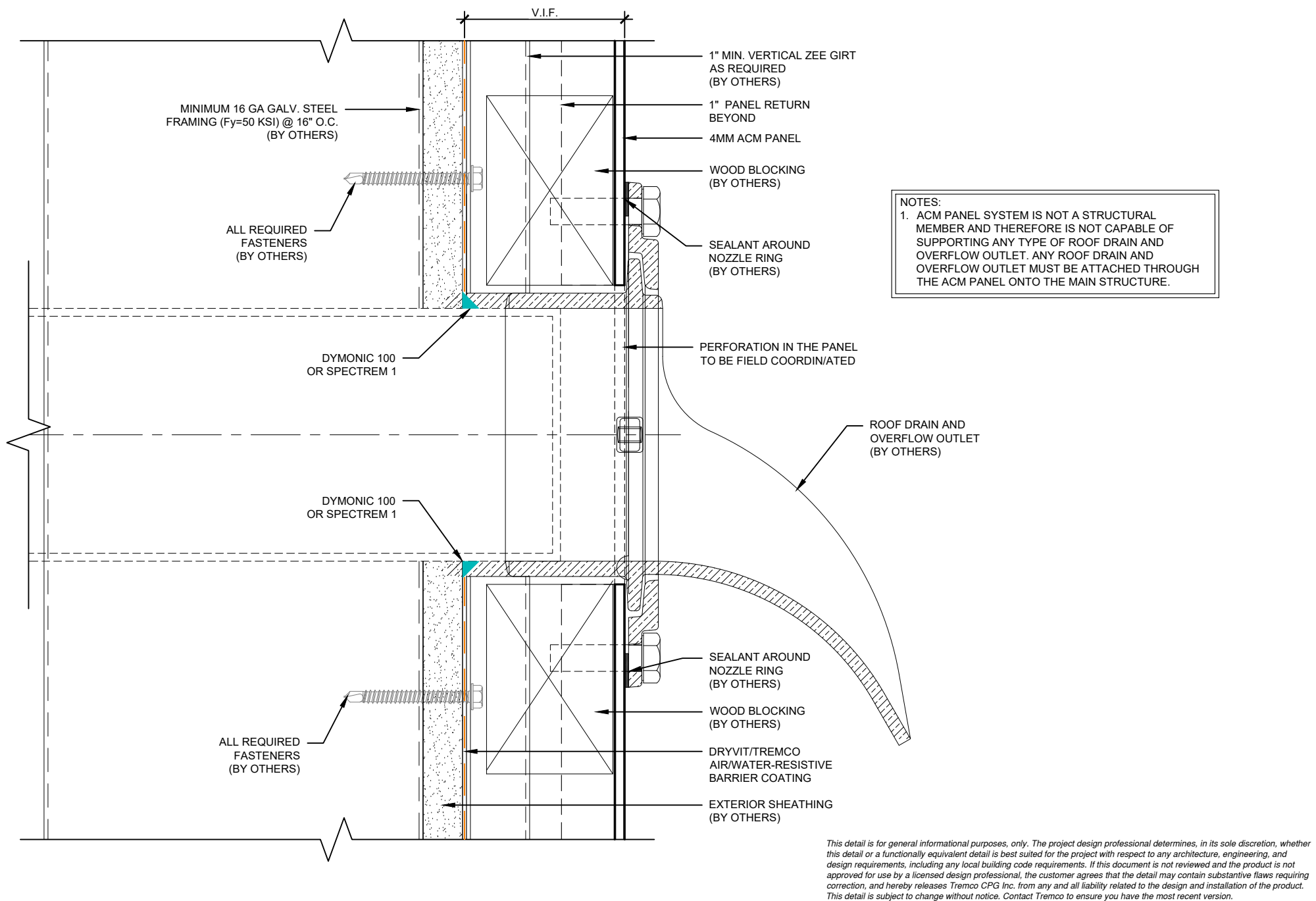
Revised by: N/A

Date: 5/28/2024

File Name:

M8000-OS-01





Metalite® 8000

Detail: Downspout Nozzle Detail

Drawn by: M.E.

Checked by: N/A

Scale: 6" = 1'-0"

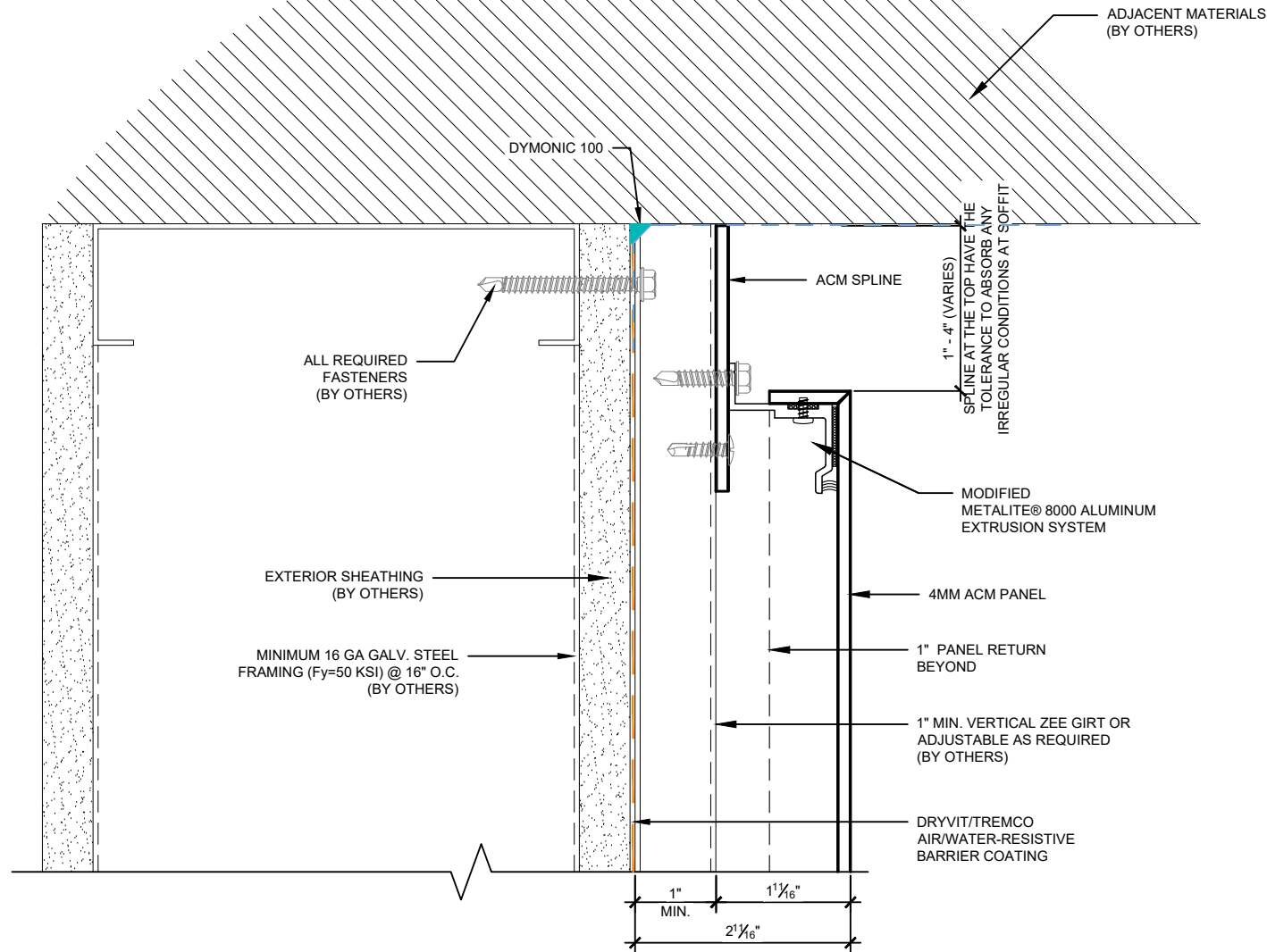
Revision #: 0

Revised by: N/A

Date: 5/28/2024

File Name:

M8000-DW-01



This detail is for general informational purposes, only. The project design professional determines, in its sole discretion, whether this detail or a functionally equivalent detail is best suited for the project with respect to any architecture, engineering, and design requirements, including any local building code requirements. If this document is not reviewed and the product is not approved for use by a licensed design professional, the customer agrees that the detail may contain substantive flaws requiring correction, and hereby releases Tremco CPG Inc. from any and all liability related to the design and installation of the product. This detail is subject to change without notice. Contact Tremco to ensure you have the most recent version.

Metalite® 8000

Detail: Top End Detail @ Column

Drawn by: M.E.

Revision #: 0

Checked by: N/A

Revised by: N/A

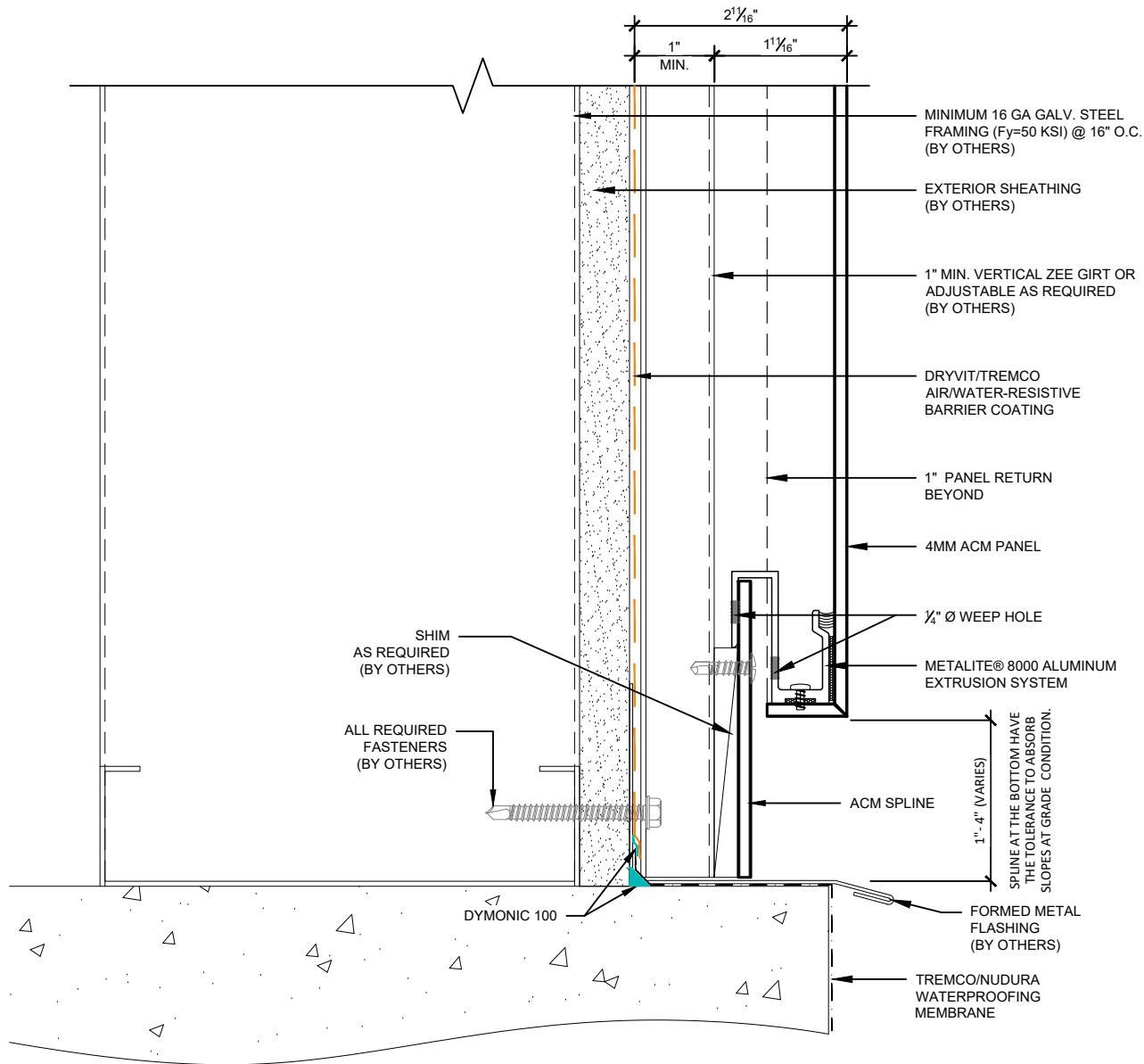
Scale: 6" = 1'-0"

Date: 5/28/2024

www.tremcocpg.com

File Name:

M8000-COL-01



This detail is for general informational purposes, only. The project design professional determines, in its sole discretion, whether this detail or a functionally equivalent detail is best suited for the project with respect to any architecture, engineering, and design requirements, including any local building code requirements. If this document is not reviewed and the product is not approved for use by a licensed design professional, the customer agrees that the detail may contain substantive flaws requiring correction, and hereby releases Tremco CPG Inc. from any and all liability related to the design and installation of the product. This detail is subject to change without notice. Contact Tremco to ensure you have the most recent version.

Metalite® 8000

Detail: Base Detail @ Column

Drawn by: M.E.

Revision #: 0

Checked by: N/A

Revised by: N/A

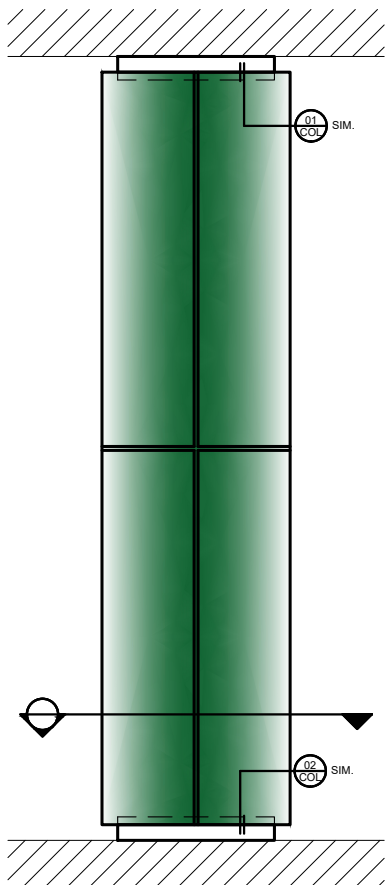
Scale: 6" = 1'-0"

Date: 5/28/2024

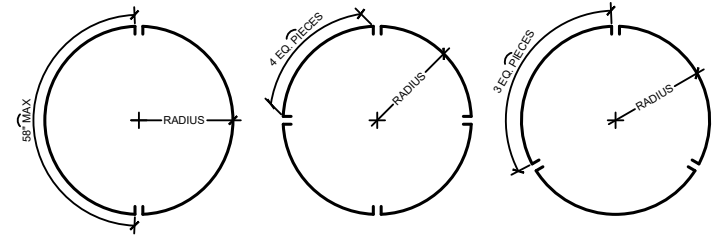
www.tremcocpg.com

File Name:

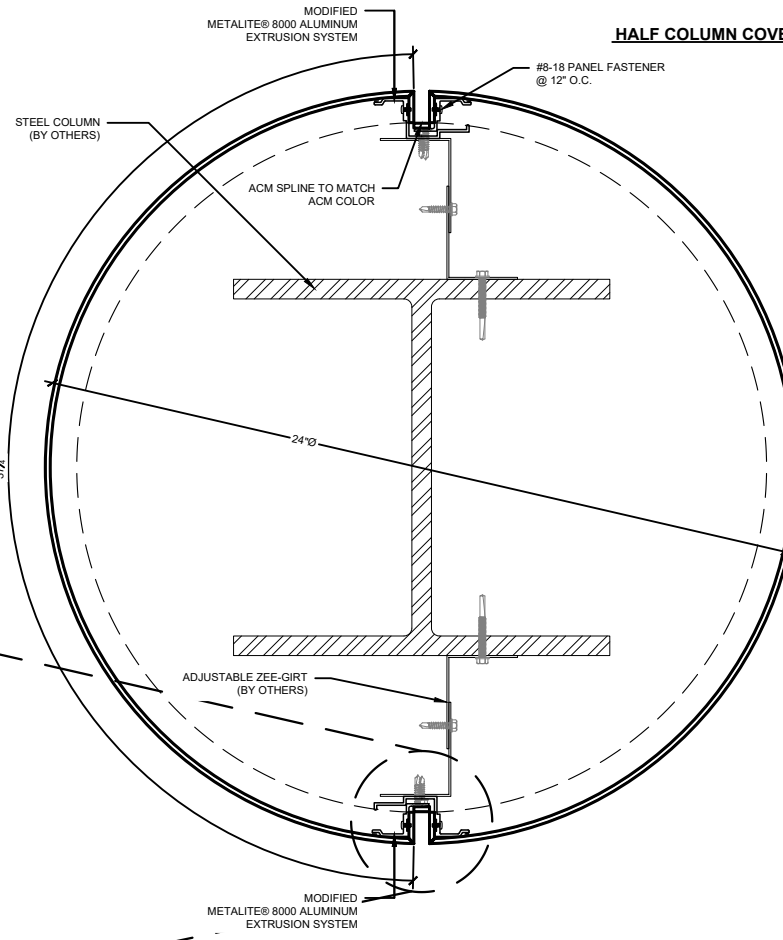
M8000-COL-02



9" MINIMUM RADIUS



HALF COLUMN COVERS QUARTER COLUMN COVERS THIRD COLUMN COVERS



- OUR COLUMN COVERS PRODUCT PROVIDE A WIDE RANGE OF DURABLE ATTRACTIVE SOLUTIONS FOR INTERIOR AND EXTERIOR STRUCTURAL APPLICATIONS. AVAILABLE IN ROUND, SQUARE OR OVAL PROFILES WITH HAIRLINE, CAULKED OR REVEAL JOINTS.
- OUR MANUFACTURING CAPABILITIES ALLOW FOR RADIIUSES AT TIGHT AS 9" (228.6MM), MAXIMUM ARC LENGTH OF 58" (1473.2MM) AND SINGLE UNITS AS TALL AS 11'-0" FEET (3.35M)
- ACM PANEL COLUMN COVERS CAN OFFER AN ECONOMICAL CHOICE FOR INTERIOR OR EXTERIOR APPLICATIONS. STANDARD PANELS ARE FIRE RATED (FR) 4MM & 6MM CORES WITH KYN/AR FINISH. ANODIZED, STAINLESS STEEL, COPPER AND ZINC ARE AVAILABLE THROUGH VARYING LIMITED SIZES DEPENDING THE MATERIAL LIMITATIONS (32" OR 48" WIDE"
- STANDARD REVEAL IS 1/2" (12.7MM). WE CAN ALSO PROVIDE A JOINT WITH A SPLICE OR CAULK.

This detail is for general informational purposes, only. The project design professional determines, in its sole discretion, whether this detail or a functionally equivalent detail is best suited for the project with respect to any architecture, engineering, and design requirements, including any local building code requirements. If this document is not reviewed and the product is not approved for use by a licensed design professional, the customer agrees that the detail may contain substantive flaws requiring correction, and hereby releases Tremco CPG Inc. from any and all liability related to the design and installation of the product. This detail is subject to change without notice. Contact Tremco to ensure you have the most recent version.

Metalite® 8000

Detail: Typical Round Column-Plan

Drawn by: M.E.

Revision #: 0

Checked by: N/A

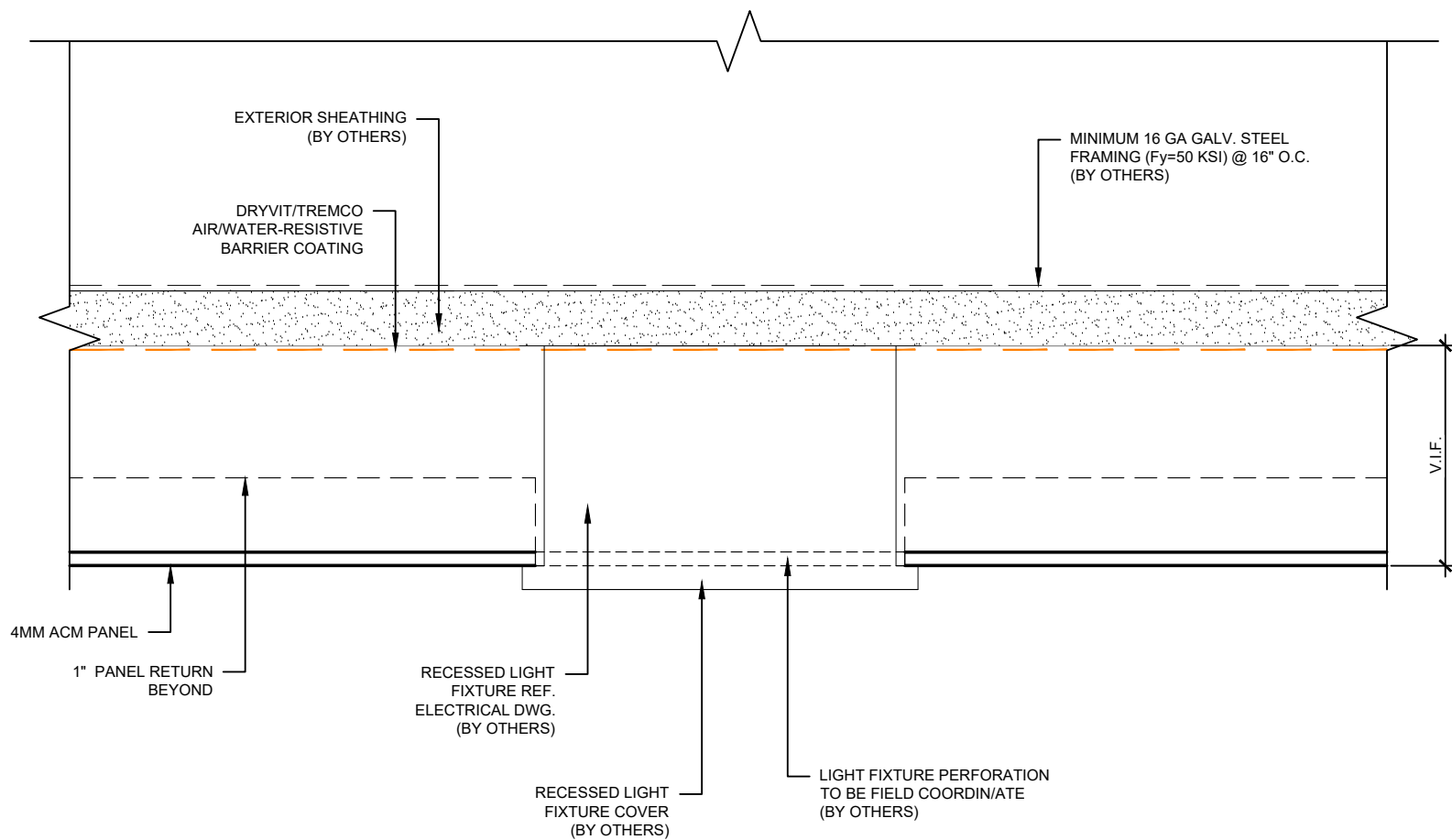
Revised by: N/A

Scale: N.T.S.

Date: 5/28/2024

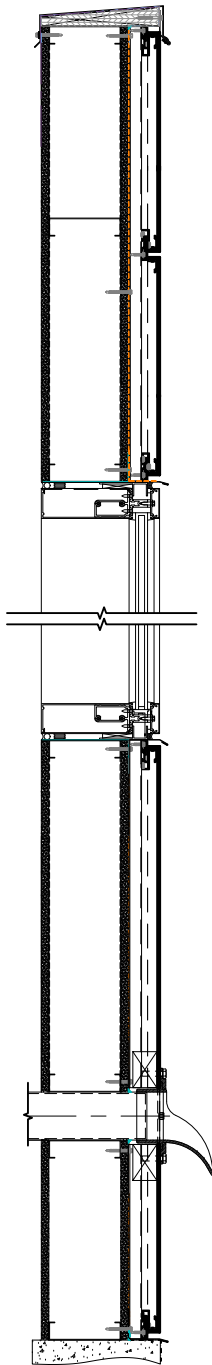
File Name:

M8000-COL-03



This detail is for general informational purposes, only. The project design professional determines, in its sole discretion, whether this detail or a functionally equivalent detail is best suited for the project with respect to any architecture, engineering, and design requirements, including any local building code requirements. If this document is not reviewed and the product is not approved for use by a licensed design professional, the customer agrees that the detail may contain substantive flaws requiring correction, and hereby releases Tremco CPG Inc. from any and all liability related to the design and installation of the product. This detail is subject to change without notice. Contact Tremco to ensure you have the most recent version.

Metalite® 8000



This detail is for general informational purposes, only. The project design professional determines, in its sole discretion, whether this detail or a functionally equivalent detail is best suited for the project with respect to any architecture, engineering, and design requirements, including any local building code requirements. If this document is not reviewed and the product is not approved for use by a licensed design professional, the customer agrees that the detail may contain substantive flaws requiring correction, and hereby releases Tremco CPG Inc. from any and all liability related to the design and installation of the product. This detail is subject to change without notice. Contact Tremco to ensure you have the most recent version.

Metalite® 8000

Detail: WALL SECTION

Drawn by: M.E.

Revision #: 0

Checked by: N/A

Revised by: N/A

Scale: 3/4" = 1'-0"

Date: 5/28/2024

File Name:

M8000-G-01



Dryvit Technical Support: 800-556-7752



www.tremcocpg.com