



# MODULITE™ PREFABRICATED PANEL SYSTEMS

*Prefabricated Panelization Systems with Dryvit Outsulation® and Beautiful Aesthetic Finish Options to Meet Any Design Need*



**MODULITE™**  
Prefabricated Solutions

**Dryvit®**

## Get Complete Control Over Schedules and Quality with Modulite Panelized Wall Systems from Dryvit

Whether you're building new or renovating, Modulite prefabricated panel systems offer unique advantages over traditional field-applied construction.

Since 1970, Dryvit has offered systems and technical support for the prefabrication space using all of the Dryvit products. Modulite panelization systems incorporate all the benefits of a Dryvit Outsulation® system — including continuous insulation (CI) and beautiful aesthetic finish options to meet any design need — all fully-tested to meet existing building codes and provide extraordinary energy efficiency. Modulite panelization systems also offer the most experienced and deepest team of partner fabricators in the industry.

---

## Why Build with Modulite Prefabricated Panels?

Speed construction or restoration. Simplify installation. Extend the construction season. A structure built with Modulite prefabricated panels means more for everyone – more satisfied contractors, more comfortable occupants or tenants, and more efficient structures and cost-effective operation for owners.



### Faster Construction Time

In-plant fabrication can reduce production time, and speed up field application of exterior cladding systems, to reduce construction schedules.



### Any Look You Want

A wide range of colors and finishes like brick, granite, metals, stucco and more provide maximum flexibility in your façade aesthetic.



### Stronger and More Resilient

Our systems are designed for maximum durability, many with service lives far surpassing that of competing systems.



### Avoid Labor Shortage Problems

Pre-fabricated Dryvit panels can help address ongoing shortages in the skilled labor force – while simultaneously maximizing quality control.



### Cost-Effective for the Long Term

A broad range of products can fit most project budgets – but our energy-efficiency and maintenance solutions can also help you ensure cost-effective ownership and operation for the long term.



### Better Insulated

Industry-leading Outsulation® continuous insulation means efficient construction and operation, and will exceed strict energy codes for insulation.



### One Point of Contact

Our products and systems are backed by industry-leading warranties – all from a single point of contact. We can also help with everything from asset management to diagnostics to installer training.



### Leading Edge Sustainability

Our building solutions help you reduce waste, and meet green building standards like Net Zero, Living Building Challenge, Passive House and more.

# PANELIZATION SELECTION GUIDE

## APPLICATIONS & PROPERTIES

SYSTEM:	Fedderlite®	Fedderlite® M	Fedderlite® MP	Outsulte®	Outsulte® Securack® ExoAir® 430	Metalite® 3100	Metalite® 8000
APPLICATION / PROPERTY							
Weight (lb/ft <sup>2</sup> , approximate)	2.5	2.5	4.5	8.0	9.0	1.56	2.29
Provides Structural Support				•	•		
Attachment: Adhered	•						
Attachment: Mechanical		•	•	•	•	•	•
10-Year Warranty Available <sup>1</sup>	•	•	•	•	•		
20-Year Warranty Available <sup>2</sup>					•		
30-Year Warranty Available <sup>1</sup>						•	•

## TEST RESULTS

TEST	TEST METHOD	CRITERIA	RESULTS
Accelerated Weathering	ASTM G 155 Cycle 1	No deleterious effects after 2000 hours	No deleterious effects after 5000 hours
Full Scale Multi-Story Fire Test <sup>3</sup>	UBC Std. 26-4	Resist flame propagation over the exterior surface	Passed
Intermediate Multi- Story Fire Test <sup>4</sup>	NFPA 285 (UBC 26-9)	Flame Spread < 25, Smoke Developed < 450	Passed with wood and steel framing
Surface Burning Characteristics	ASTM E 84		Passed
Thermal Resistance	ASTM C 177, C 518		Passed

<sup>1</sup> Visit [dryvit.com](http://dryvit.com) for more details on warranty terms

<sup>2</sup> With Tremco Spectrem silicone sealants as the joint treatments

<sup>3</sup> Outsulte and Fedderlite

<sup>4</sup> Outsulte and Fedderlite



# FEDDERLITE® / FEDDERLITE® M

Prefabricated Exterior Wall Insulation and Finish Systems for Use over Solid Substrates

## Product Overview

Fedderlite® is a lightweight panel system for use in new construction or retrofit over solid substrates.

This panel utilizes a unique process for embedding reinforcing channels into the continuous insulation to provide a means for handling, as well as mechanical attachment to the wall.

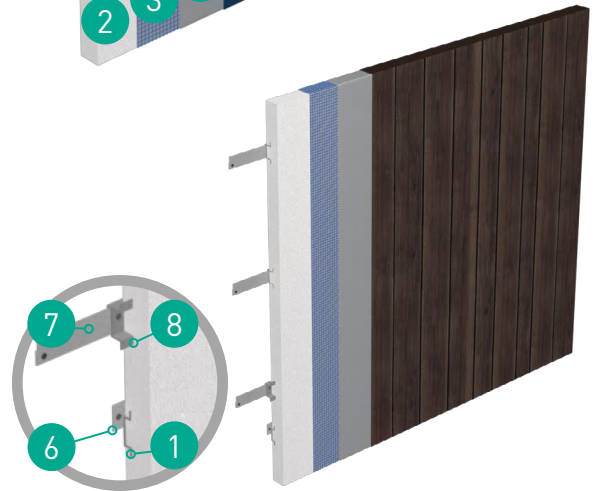
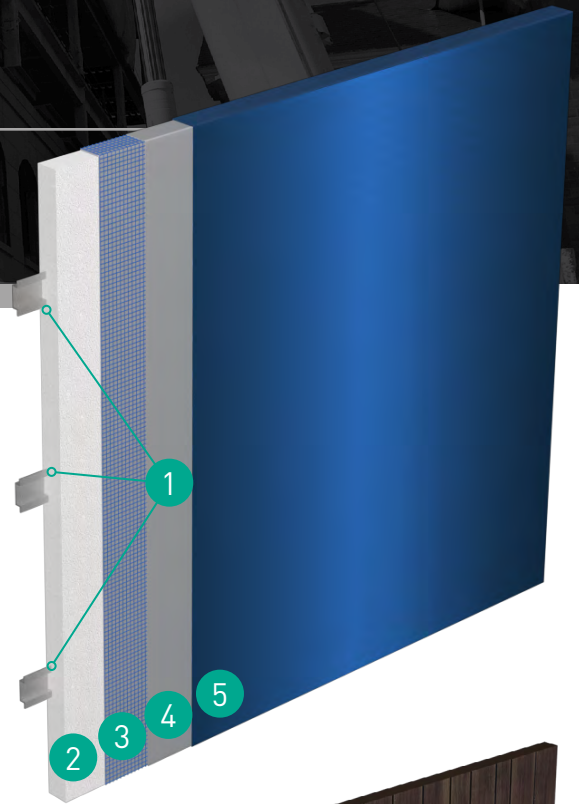
Fedderlite panels may be adhered or mechanically fastened to approved substrates.

## Features & Benefits

- Ultra-Lightweight (approximately 2.5 lb/ft<sup>2</sup>) construction for easier handling and on-site installation
- Panels must be attached to a smooth, solid substrate for streamlined installation
- Unique, embedded reinforcing channels provide strength and enhanced handling
- Mechanically attached *Fedderlite M* allows for cold weather installs, eliminates adhesive mixing, and helps reduce in-field installation labor



Sandpebble fine finish, in a custom color



## System Components

1	Fedderlite Channels
2	Dryvit Approved Insulation Material
3	Reinforcing Mesh ( <i>Embedded in Base Coat</i> )
4	Base Coat
5	Finish Coat ( <i>Shown: Reflectit™ Smooth. See pg. 8</i> )
6	Mounting Plate ( <i>Optional</i> )
7	Mounting Rail ( <i>Fedderlite M Only</i> )
8	Fedderlite M Channel ( <i>Fedderlite M Only</i> )



# FEDDERLITE® MP

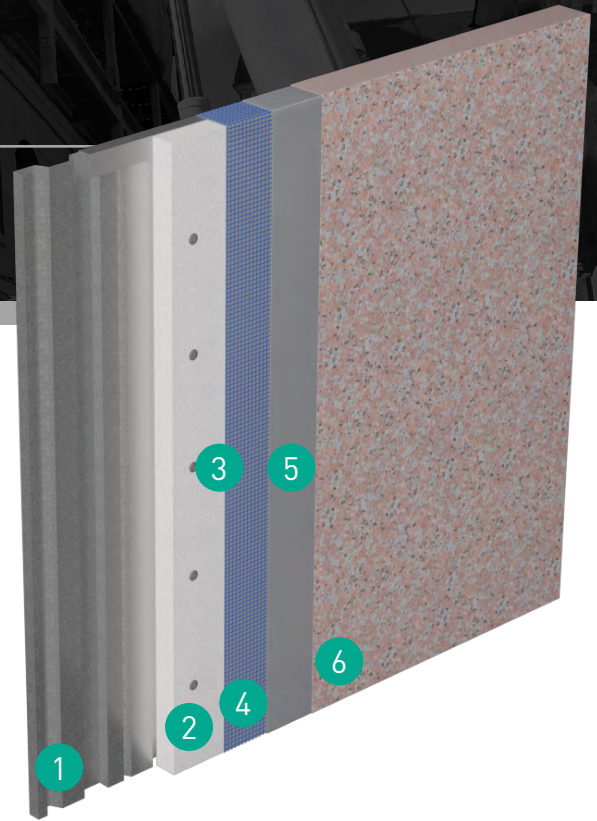
Prefabricated Panelization System Installed over a Proprietary Light-Gauge Metal Pan

## Product Overview

Fedderlite® MP is a prefabricated panel system utilizing a Dryvit Outsulation® system over a specially designed, proprietary light-gauge metal pan.

Fedderlite MP is ideally suited for pre-engineered metal buildings, warehouses and manufacturing facilities, in addition to mechanical screens and retrofit construction applications.

The pan and panel system are mechanically fastened.



## Features & Benefits

- Outsulation system over a specially-designed, light-gauge metal frame and proprietary metal pan
- Lightweight, at approximately only 4.5 lb/ft<sup>2</sup>
- Ideal for pre-engineered metal buildings, screen walls, and over irregular surfaces
- Proprietary, industry-unique system

## System Components

1	Fedderlite MP Decking
2	Dryvit Approved Insulation Material
3	Mechanical Fasteners
4	Reinforcing Mesh ( <i>Embedded in Base Coat</i> )
5	Base Coat
6	Finish Coat ( <i>Shown: Ameristone™. See pg. 8</i> )



Fedderlite MP restoration over split-faced block



Fedderlite MP installation

# METALITE® 3100

High-Performance Vertical Wall  
Aluminum Composite Material System

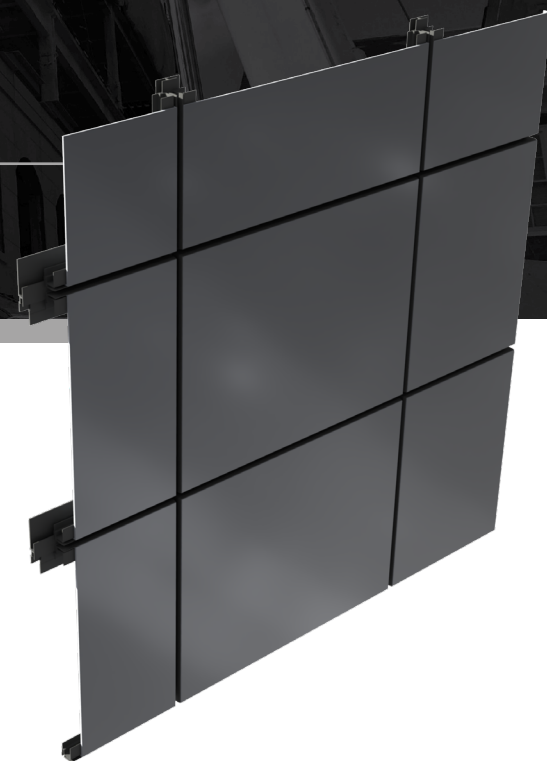
## Product Overview

Metalite® 3100 is a high-performance vertical wall system, suitable for use in the most demanding applications. Designed, engineered and tested to the highest performance criteria, this system provides unrivaled structural integrity. The system is custom-fabricated with Aluminum Composite Material (ACM) which is known for flatness, ease of fabrication and clean, sleek appearance, to achieve virtually any design.

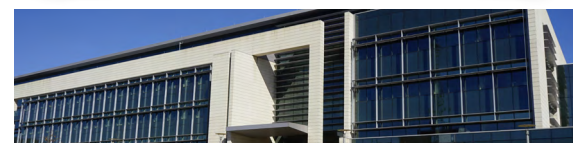
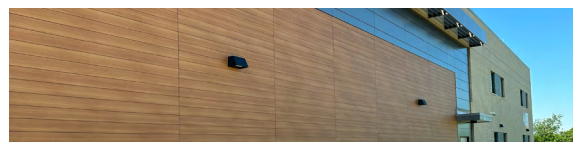
This system incorporates a route-and-return fabrication technique with continuous proprietary interlocking extrusions. The panel joints do not require field-applied sealants as the weather-proofing is engineered into the joinery via concealed, integral gaskets.

## Features & Benefits

- Metalite 3100 system offers quick and easy installation
- Market leading warranty up to 30 years for Metal Finish, 10 years for Delamination, 5 years for Fabrication Workmanship
- Lightweight system at 2.89 lbs/ft<sup>2</sup>
- Weeped to allow condensation to escape the cavity
- Passes NFPA 285 testing and quality assurance quality control



## Diverse Color Options





# METALITE® 8000

Drained/Back-Ventilated Rainscreen Aluminum Composite Material System

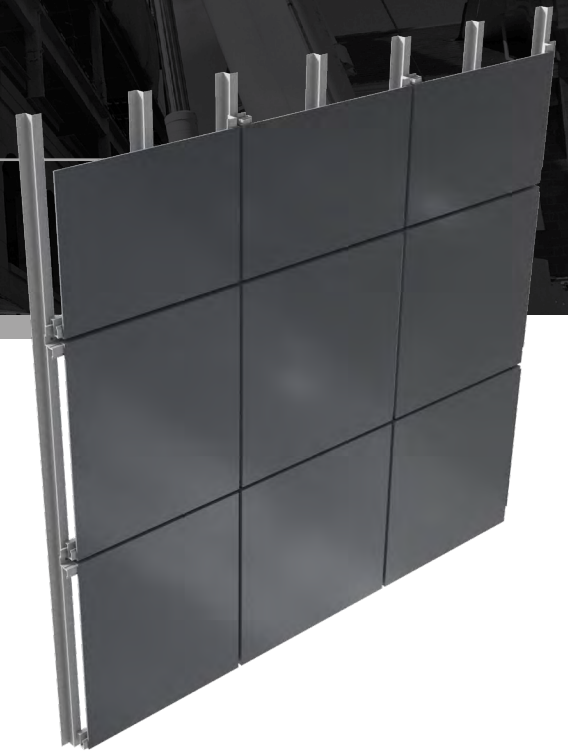
## Product Overview

The Metalite® 8000 system was specially designed to revolutionize prefabricated panels with its combination of visual appeal, quick installation, low maintenance, and lightweight construction. Quick and easy installation processes ensures a hassle-free experience, with minimal components required, streamlining the setup without compromising on quality.

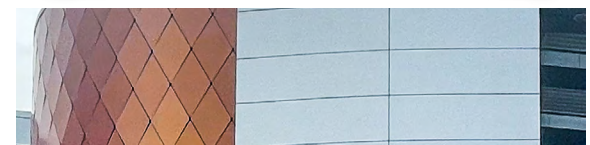
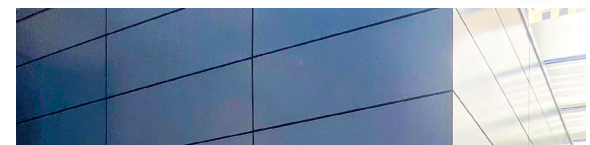
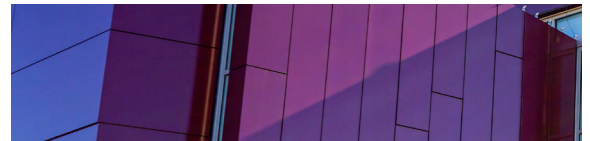
Built to withstand the elements, from fire to rain and everyday wear and tear, this system stands strong as a reliable cladding. Its durability is matched by its sustainability, as it can be recycled, aligning with eco-conscious initiatives. Metalite 8000 capitalizes on the beauty and sleek design of Aluminum Composite Material (ACM) systems while simultaneously delivering high-quality performance.

## Features & Benefits

- Metalite 8000 system offers quick and easy installation
- Market leading warranty up to 30 years for Metal Finish, 10 years for Delamination, 5 years for Fabrication Workmanship
- Lightweight system at 2.29 lbs/ft<sup>2</sup>
- Achieves a clean exterior due to its rivetless design
- Passes NFPA 285 testing and quality assurance quality control



## Diverse Color Options



# OUTSULITE® / OUTSULITE® SECUROCK® EXOAIR® 430

Industry-Leading Panel Systems with Dryvit  
Outsulation and an Air/Water-Resistive Barrier

## Product Overview

The most versatile Modulte panel system, Outsulite® provides the strength and ability to configure to any panel shape, and are designed in accordance with current AISI Standards and manufacturer load tables. Deflections are limited to L/240. Stud, sheathing and building connections are engineered by panel fabricators to conform with building code design load requirements.

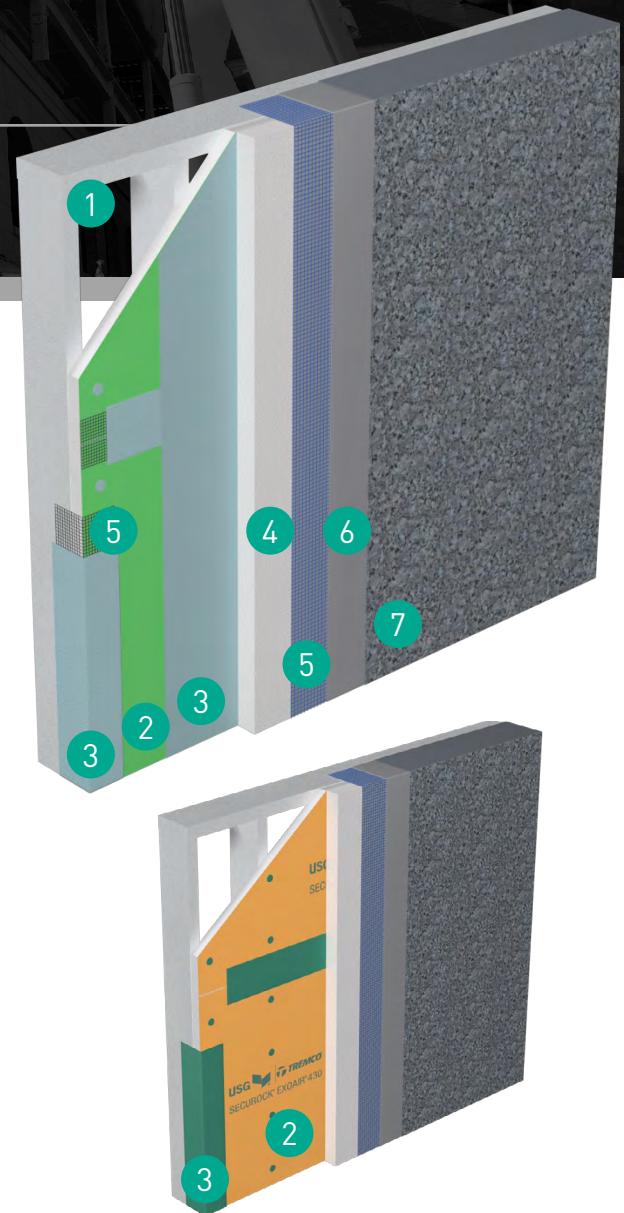
At approximately 8 lb/ft<sup>2</sup>, Outsulite panels are a lightweight alternative to conventional systems, providing a single structural system for supporting the exterior cladding, window systems and other accessories.

## Features & Benefits

- Maximum insulation in a single structural system for supporting cladding, window systems and more
- Perfect for tight job sites
- Single structural system for supporting cladding, fenestration systems and more
- Controlled factory application of [Securock® ExoAir® 430](#) ensures proper mil thickness and uniformity



Outsulite panel installation



1	Light-Gauge Steel Framing
2	Dryvit Approved Sheathing / Securock ExoAir 430 Air /Water-Resistive Barrier
3	Backstop® Air/Water-Resistive Barrier / Dymonic® 100 Detailing Sealant
4	Dryvit Approved Insulating Material
5	Reinforcing Mesh ( <i>Embedded in Base Coat</i> )
6	Base Coat
7	Finish Coat ( <i>Shown: TerraNeo®. See pg. 8</i> )



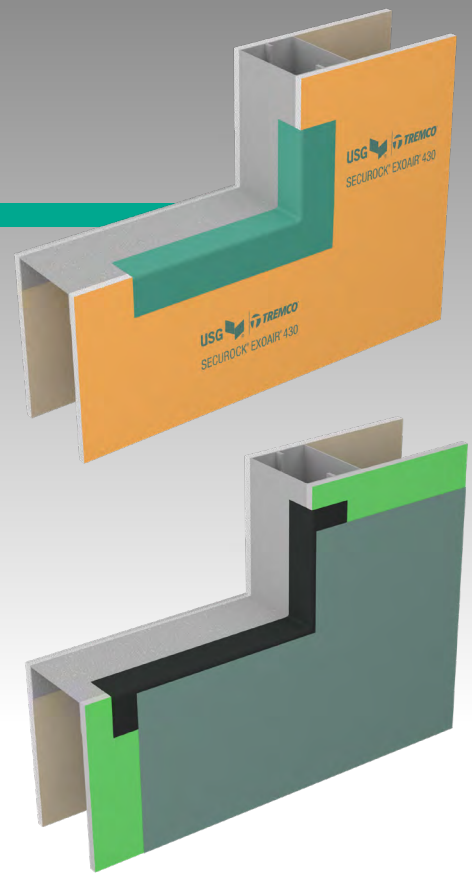
# BACKER PANEL

## (ACCESSORY)

### Product Overview

Outsulate® BP Backer Panels consist of a light-gauge steel frame with sheathing and pre-applied air barriers — with a range of technology options available based on project needs. These panels are designed for easy installation in the field, and can be finished in almost any aesthetic option desired, including any combination of Dryvit colors, textures or finishes, plus metal panels, masonry veneer, brick and more. All finish options can be added during prefabrication or on the jobsite.

When included as part of a whole wall system, Outsulate BP Backer Panels are warranted in a single document and are compatible with the building's Outsulation System, Dryvit® exterior finish, Tremco® below-grade waterproofing and all the exterior wall system transitions and connections, from the foundation to the roofline. No other manufacturer offers this level of efficiency and security for building design and construction.



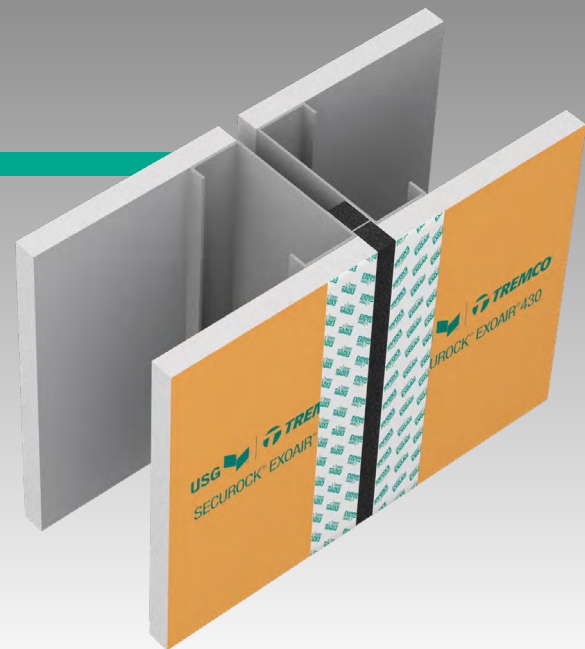
# WILLSEAL® PF100

## (ACCESSORY)

### Product Overview

Willseal® PF100 is a pre-compressed, self-expanding foam joint seal, engineered to perform as a weathertight primary seal designed for use in various prefabricated applications. It self-expands to fill the joint and is capable of +/- 50% movement from the mean joint size. The high-density polyurethane foam is impregnated with a modified flame retardant, UV stable acrylic resin and an integral silicone seal barrier, which is protected by the foam core.

This revolutionary solution has been tested and validated to enhance building envelope connectivity, while also reducing the need to conduct installation activities from the exterior of the structure as panels are erected.



# DEEP ENERGY RETROFITS

## SOLUTIONS FOR SUSTAINABLE BUILDING RENOVATIONS



Corona del Rey Affordable Housing Units  
Corona, California  
Dryvit Prefabricated Wall Panels | WTI Installation and Maintenance

## COMPREHENSIVE BUILDING ENCLOSURE RETROFIT SYSTEMS

High-performance envelope solutions designed to reduce a structure's energy consumption and carbon footprint while minimizing time on-site, demolition and disruption to tenants.

### Tremco Construction Products Group (CPG) brands provide:

- Assistance with building enclosure design, testing and installation to ensure performance.
- Project testing to verify designs, installation processes and thermal, air and moisture performance.
- Versatile product solutions to meet stringent carbon and energy goals for programs such as Retrofit NY, REALIZE CA, REALIZE-MA and Energize Denver
- Product installation, ongoing maintenance and single-source warranties for long-term protection.
- Access through our partnerships to expanded financial options, energy analysis, monitoring and more.

### Plus all the benefits of prefabrication:

- Insulated panels produced off-site
- Eliminate delays typically associated with inclement weather
- Mitigate limited access or space on-site
- Faster on-site construction cycles
- Minimized disruption to occupants
- Improved quality control and performance





## The Industry's Premier National Partner Fabricator Network

Not only is Dryvit the most experienced EIFS manufacturer, we've also been at the forefront of the EIFS panelization business since the early 1970s. Our innovative products, Modulite panel systems and Partner Fabricator Network continues to grow everyday.

The Dryvit Partner Fabricator Network is capable of assisting you anywhere in the United States.

For info on the fabricator nearest you, contact our panelization team at 1-800-556-7752, ext. 9.

### Part of the Tremco Construction Products Group

Tremco Construction Products Group (CPG) brings together the Commercial Sealants & Waterproofing and Roofing & Building Maintenance divisions of Tremco CPG Inc.; Dryvit and Willseal brands; Nudura Inc.; Prebuck LLC; Tremco Barrier Solutions, Inc.; Weatherproofing Technologies, Inc.; Weatherproofing Technologies Canada, Inc.; and Pure Air Control Services, Inc.

Products from across the Tremco CPG companies' lines are designed for maximum waterproofing, thermal, sound, and air-tightness, and systems are rigorously tested for performance and compatibility at our one-of-a-kind building science laboratory.

Look to Tremco CPG for:

- Dryvit and Tremco Flashing, and Air and Vapor Barrier Systems
- Willseal Pre-Compressed Foam Expansion Joint Products
- Tremco Sealants, Adhesives and Transition Assemblies
- Nudura Insulated Concrete Form (ICF) Systems





# FINISH & COLOR OPTIONS

We all want our buildings to stand out and be noticed. That's why Dryvit manufactures a wide array of finishes that replicate everything from brick, to stone, to granite, to metal panels and more. Use them alone or in any combination to create the exact exterior you want, at a fraction of the weight — and cost — of the traditional materials.

And, when you factor in the enormous palette of color and detail options for each finish, your design options are all but limitless.

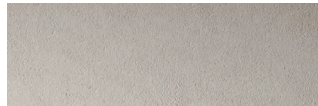
## DRYVIT® FINISH OPTIONS | Choose from unlimited color and finish combinations!



AMERISTONE™



FERROS™



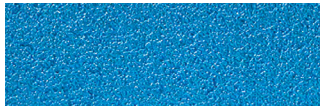
LYMESTONE™



QUARZPUTZ®



STONE MIST



REFLECTIT™ TEXTURE



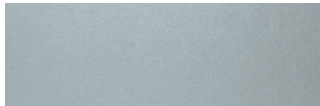
CUSTOM BRICK™



SANDPEBBLE™



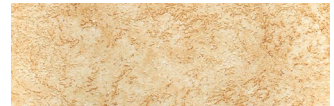
TERRANEO®



REFLECTIT™ SMOOTH



WOODGRAIN



TUSCAN GLAZE™

## METAL OPTIONS | Multiple color options are available - see your local sales rep for more details.



Part of Tremco Construction Products Group

Tremco CPG Inc. | 3735 Green Road | Beacwood, OH 44122 | 401.822.4100 | [dryvit.com](http://dryvit.com)

Tremco Construction Products Group (CPG) brings together Tremco CPG Inc. and its Dryvit and Nudura brands; Willseal; Prebuck LLC; Tremco Barrier Solutions, Inc.; Weatherproofing Technologies, Inc. and its Pure Air Control Services and Canam Building Envelope Specialists offerings; and Weatherproofing Technologies Canada, Inc.



Use of the ® symbol indicates registration with the US Patent & Trademark Office and the Canadian Intellectual Property Office.  
©Tremco CPG Inc. 2024

[tremcocpg.com](http://tremcocpg.com)

L-0008/0924