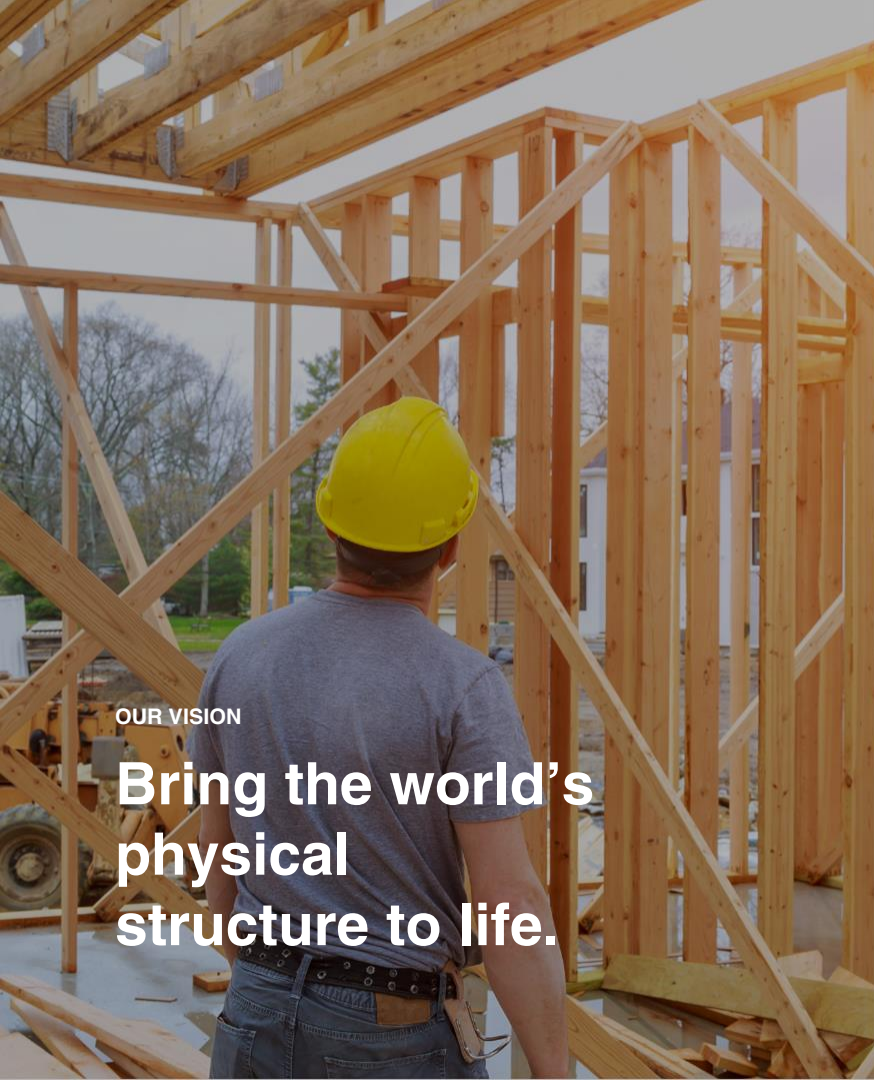


Hover for New Construction

Win the bids you want.

Hover



OUR VISION

**Bring the world's
physical
structure to life.**

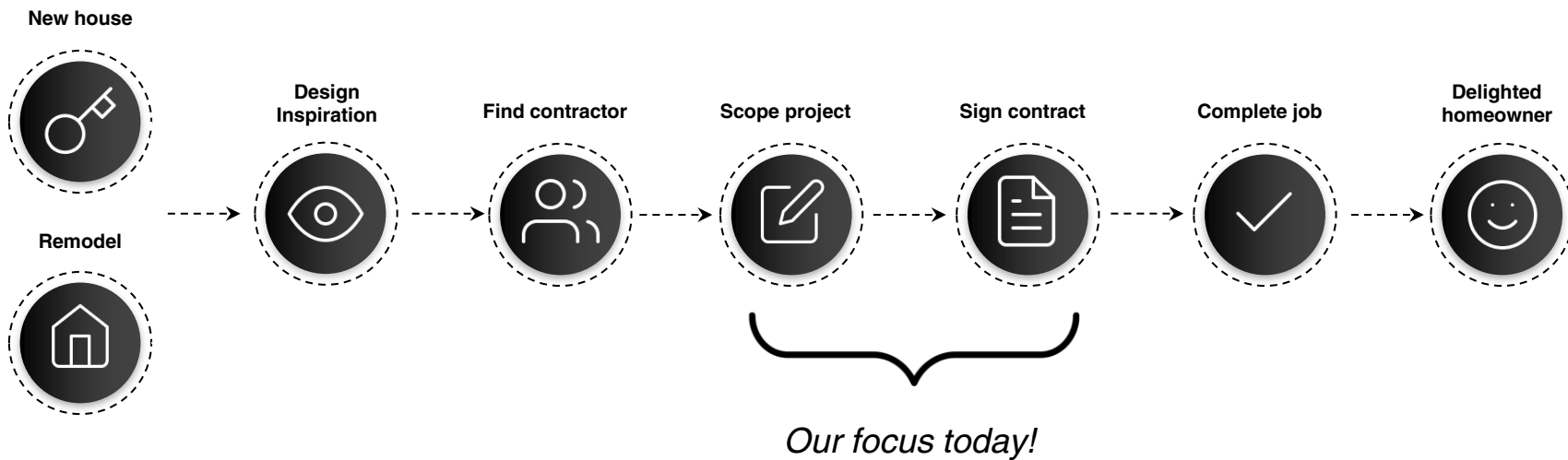
Our agenda:

- ...
- ...
- ...
- Answer any questions that you have and provide additional resources

What is Hover?

Hover

Hover is where **homeowners** and **pros** get the job done.

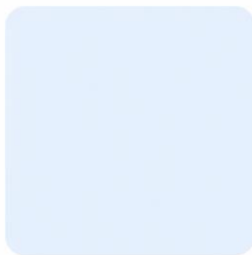


WE HELP PROS

Win bids for
the jobs they want.

Hover

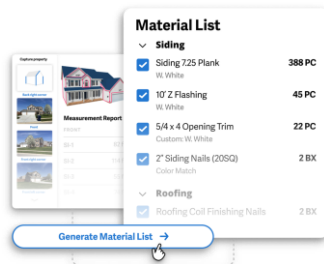
Our solutions for new construction



Measurements in ~ 24hrs*

Get siding and roofing
measurements automatically, free of
scaling or tracing

**Properties 10k - 50k sqft
within 48hrs*



Two-click material takeoffs

Generate material lists instantly,
no calculator or spreadsheets
required

*Included in every
blueprint upload project*



Interactive design tools

Showcase your value with
a 3D model and inspiring designs
that you can edit

*3D model included in every blueprint
upload project - Upgrades available*

Never measure a blueprint again



Bid more in less time

With less time spent number crunching, a fast turnaround with the info you need, you can bid on more projects



Reduce guesswork and rework

When you win a bid using Hover, you reduce re-work and hiccups during installation



Build bids that standout

Turn a 2D, black and white drawing into inspiring designs to get noticed and make sure everyone is aligned

Win more, work less.

Getting dependable measurements from blueprints doesn't need to be intimidating or time consuming.

With Hover, you only need to upload a file, saving you time on every bid.

No scaling or tracing required.



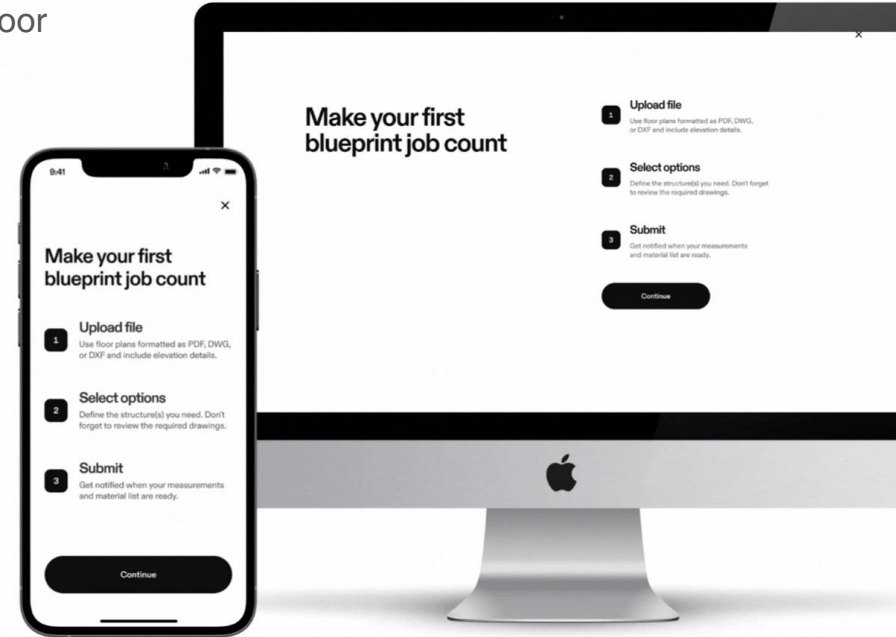
“HOVER has saved me countless hours measuring blueprints!”

Chandler Novanty, Northshore Exteriors

Just upload your file(s)

Use plans formatted as PDF, DWG, or DXF and include floor plans with measurements and elevation details.

- Web- On the “My Properties” page you will see a new construction tile
- Mobile - From the drop down menu, select “Start” next to Upload Blueprints
- Drag and drop or choose a file to upload your blueprint(s)
- Acknowledge the terms and conditions, then click Upload and continue



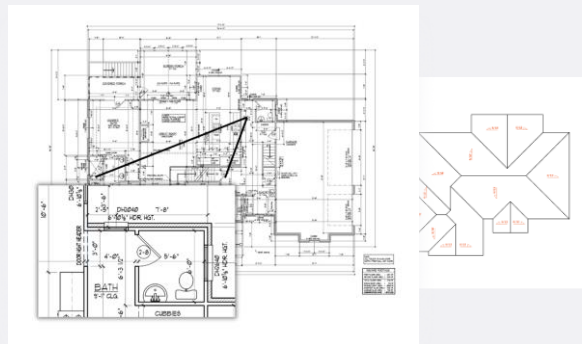
Required drawings

Property elevations



A property's elevations are detailed architectural drawings that show what each side of a building looks like from the outside. They are typically used in the design and construction process to show the details of the building, including doors, windows, materials, and any other architectural features.

Floor plan



A floor plan on a blueprint is a scaled drawing that shows the layout of a room or building from above, detailing the arrangement of walls, doors, and windows. It's like a map of the building's interior spaces.



These are required for both Complete, and Roof-only jobs.

Make sure the measurements are legible when zoomed in!

Select your output

Clarify which structures and measurements you would like to receive - everything in the plan or specific variations or trades.

- The app will default to the “Everything from file” option
- The Project name auto-fills with the name of your blueprint file - but can be edited
- If you have more than one billing option or “wallet” tied to your account, you’ll see a “Bill to” drop-down menu

Each structure or variation will be billed and delivered as a separate project, but automatically grouped together in your Projects list for easier job management.



Everything from file

All structures and material variations from uploaded files



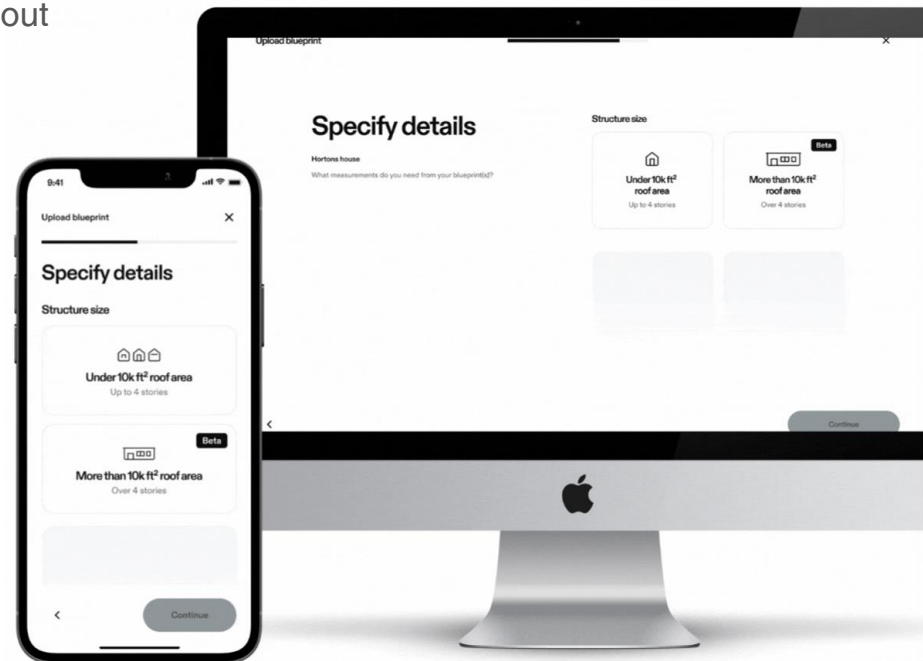
Specify details

Tell us exactly what structures and material variations to build

Specify details

If you don't want everything from the file, tell us more about the structures that you want built.

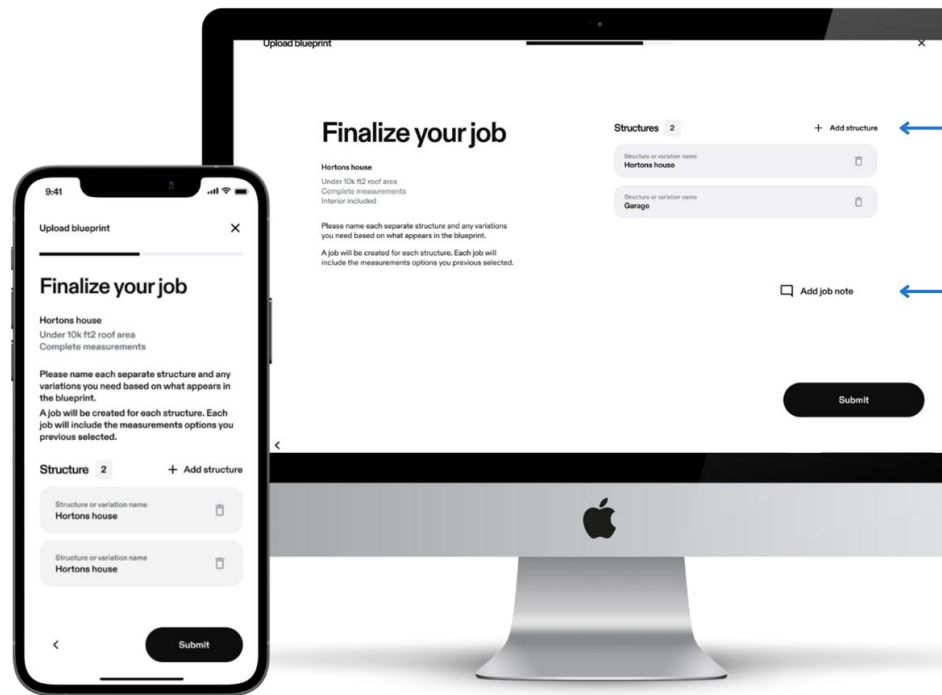
- Select structure size
 - Standard - Roof area is under 10k sq ft and up to 4 stories
 - Large - Roof area is more than 10k sq ft or over 4 stories (50k sq ft max)
- Select measurement type (roof only or complete)



Finalize and submit

Lastly, clarify the name of each structure.

- Enter the name of the structure(s) **exactly as they appear on the blueprint**
 - To add additional structures click + Add structure
- To add optional job notes for you and your team to reference later, click Add job note
 - Hover will not see your notes
- Click Submit



Frequently asked questions

Q: What is the turnaround time?

A: Most jobs are returned within 24 hours, though structures that are 10k - 50k sqft may take up to 48 hours.

Q: What job type does Hover support?

A: Hover supports siding and roofing trades with detail for fascia, soffit, gutters, window openings, and more.

Q: What is the accuracy?

A: Our measurements are consistent when compared with the use of other standard industry tools to manually scale and trace blueprint plans.

Q: How do you charge for new construction jobs?

A: Per-job pricing for blueprints start as low as \$55 before discounts.

See the pricing page for more detail.

Takeoffs in two clicks?

It's true. With Hover, say goodbye to the tiresome task of calculating material quantities.

With material lists calculated based on detailed, to-the-inch measurements, you can deliver your bids and order your material seamlessly and efficiently.



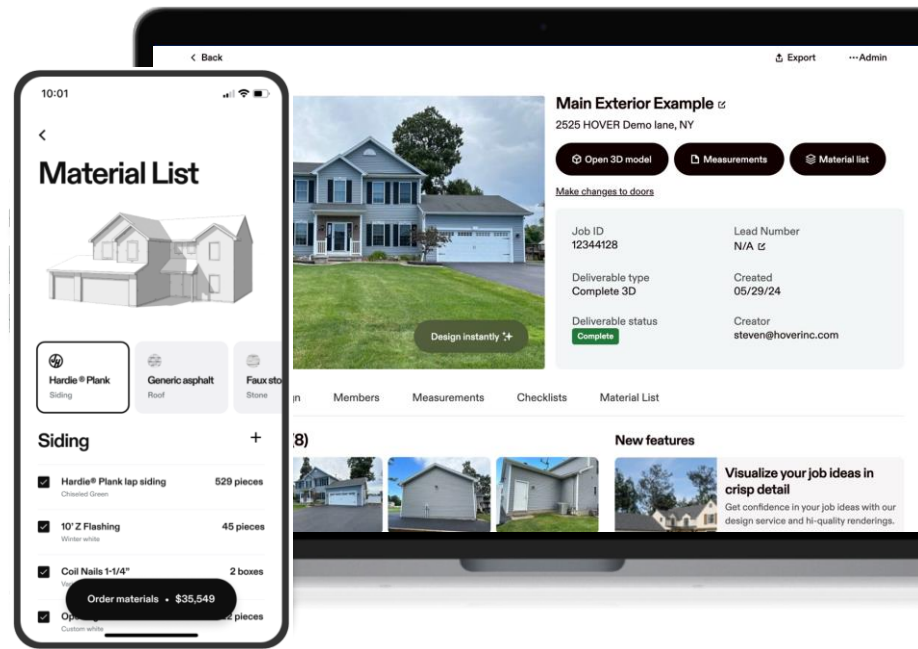
“Before this solution existed, I didn't have time to scale off a blueprint. Now, I can bid on more jobs and win more business. It's a game changer.”

David Ferraro, Good Guys Contracting

Material Lists

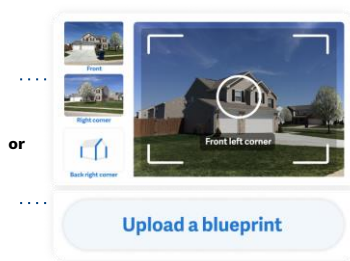
With Hover, you can generate detailed material lists by simply selecting from templates that can be customized to your needs.

- No setup, data entry, or onboarding needed
- Templates built in collaboration with manufacturers and industry experts
- Live product search for supplier product names / SKUs
- Custom edits to your material lists can be saved, so future bids are even faster



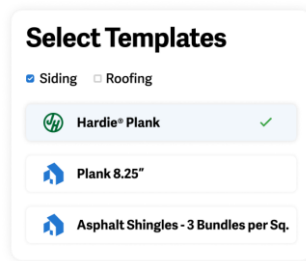
Material quantities you can trust

Automatically calculated from Hover's to-the-inch measurements, so you can confidently order just the right amount of materials every time.



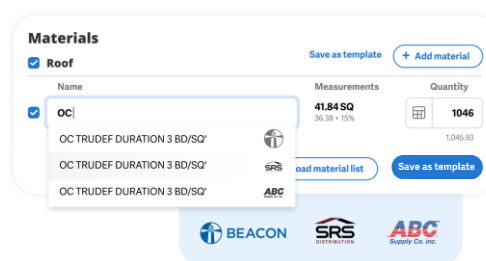
Take photos or upload a blueprint

No human errors from hand measuring or tracing.



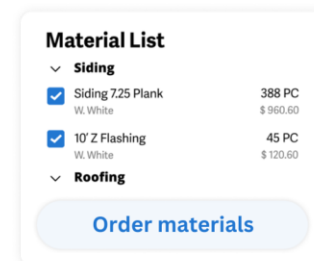
Select a material list template

Reduce costly misorders and guesswork.



Live product search, and save as template

Spend less time number crunching and more time selling.



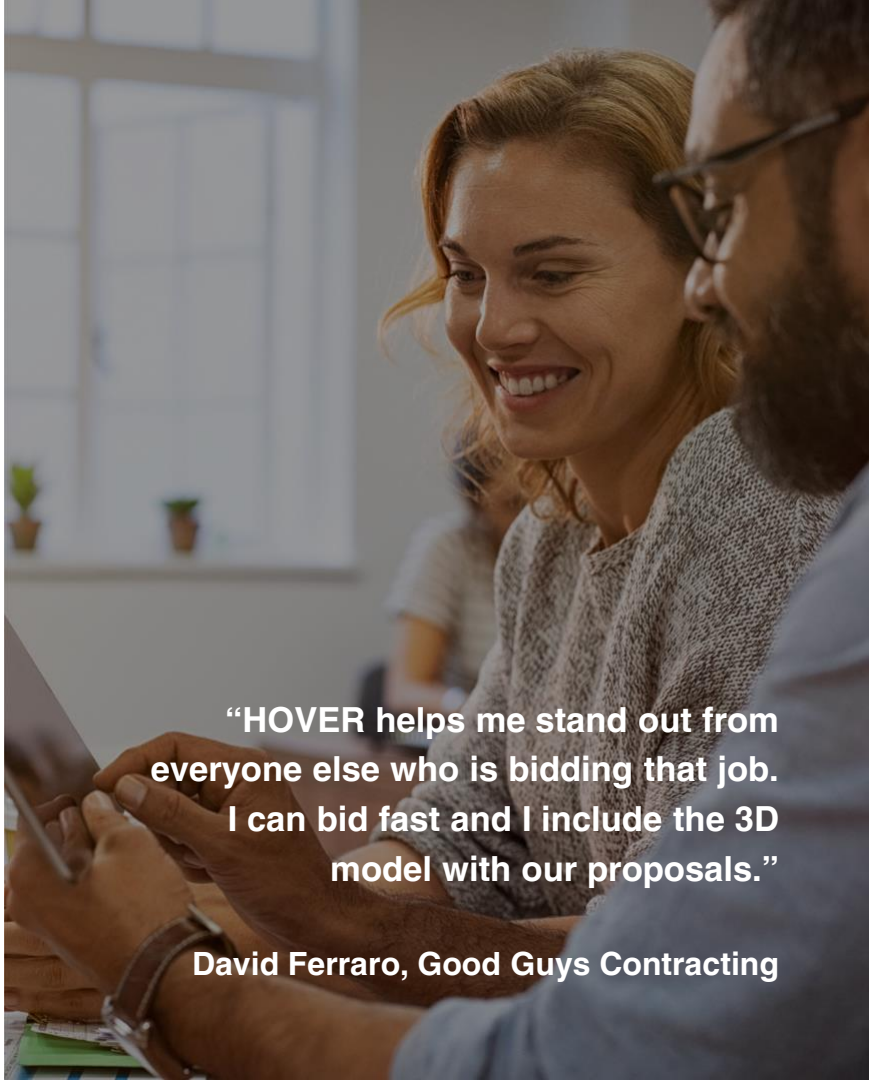
Review and order materials

Confidently tackle new or complex opportunities.

Stand out from your competition

With Hover, you have the tools to showcase your grasp of the project.

Support how you came to your estimate with ease, providing visual designs of the finished project to get noticed, and make sure everyone is aligned before the project starts.

A woman with blonde hair and a man with a beard and glasses are smiling and looking at a laptop screen. They are in an office environment with a window and some potted plants in the background.

“HOVER helps me stand out from everyone else who is bidding that job. I can bid fast and I include the 3D model with our proposals.”

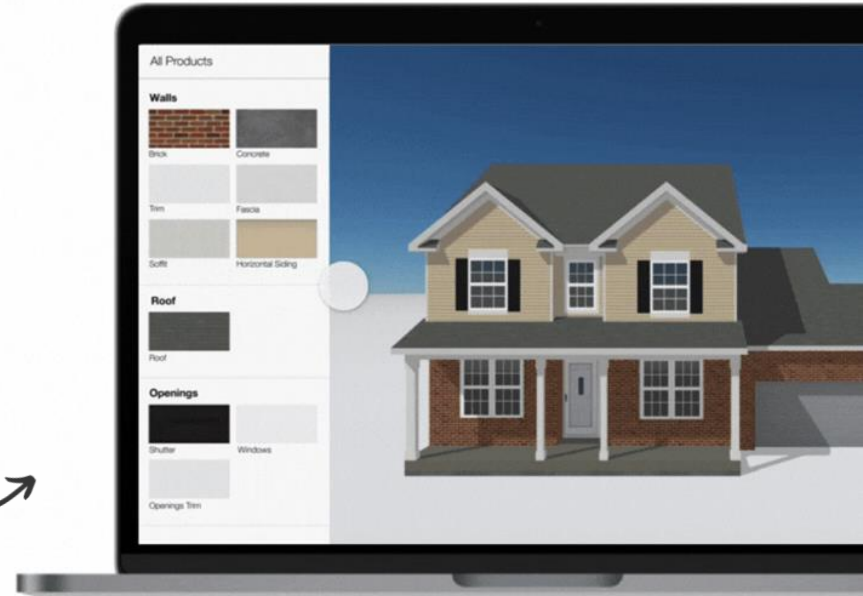
David Ferraro, Good Guys Contracting

Bring the project to life

Leverage the 3D model in your proposals to showcase what an unbuilt structure will actually look like with proposed products and colors.

- Automatically created for you with every exterior project
- Edit roofing, siding, trim, windows and more
- Customize material types and color choices with the products you already sell
- Export BIM file to use in your own design software

*Choose from over 15,000
unique products!*

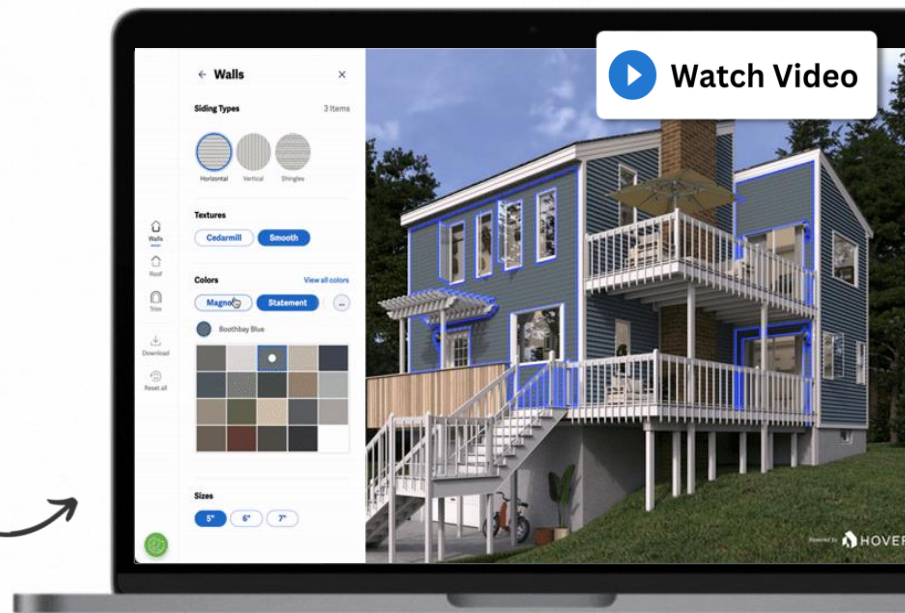


Impressive bids, smoother jobs.

Transform any Hover 3D model into a fully detailed, photo-realistic representation of a project.

With a clear visual reference across multiple trades, you can ensure your customers and crews are all on the same page, reducing the likelihood of errors or change orders.

Edit your design in real time with customers



A photograph of two men in an office setting. The man on the left, with grey hair and a beard, wears a yellow sweater and glasses. The man on the right, with dark hair and a beard, wears a light blue patterned shirt and glasses. They are both looking at a laptop screen. The man on the right has his hand near his chin in a thoughtful pose. The background shows office shelves and a desk with a plant.

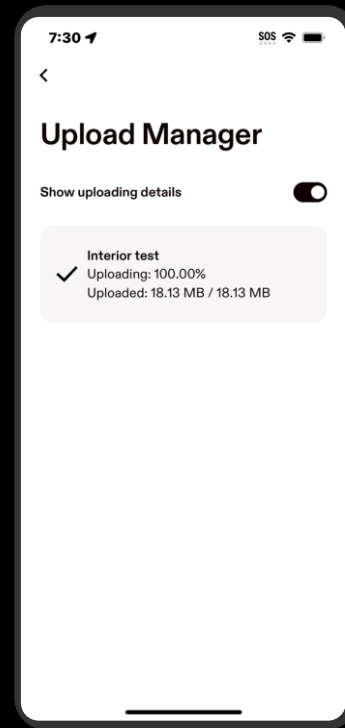
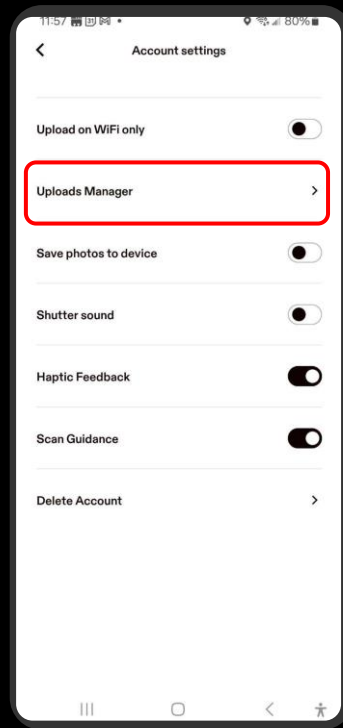
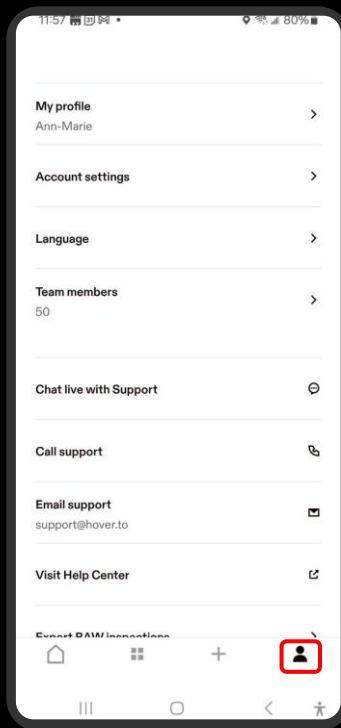
Troubleshooting

Hover

Upload Paused Jobs

Do you need to re-upload a paused job?

1. Tap the settings icon
1. Tap **Account settings**
1. Open **Uploads Manager**



Reviewing your job

Take a few minutes to check things over.

Blueprints are subject to some interpretation and so we ask you review the report briefly before you use it to bid or order materials.

1. Check at least one reference measurement
2. Check the material types that were applied

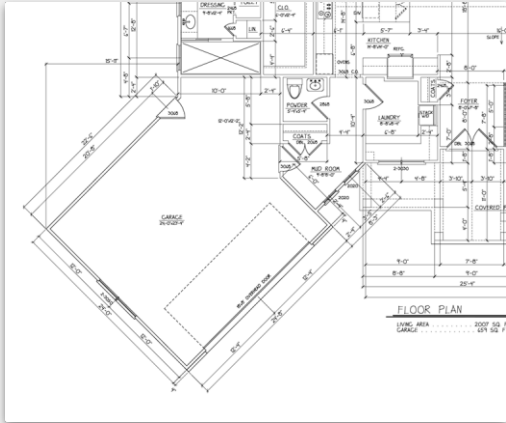


TIP: If your plan included options for variations, make sure the model/report reflects the one(s) you intended.

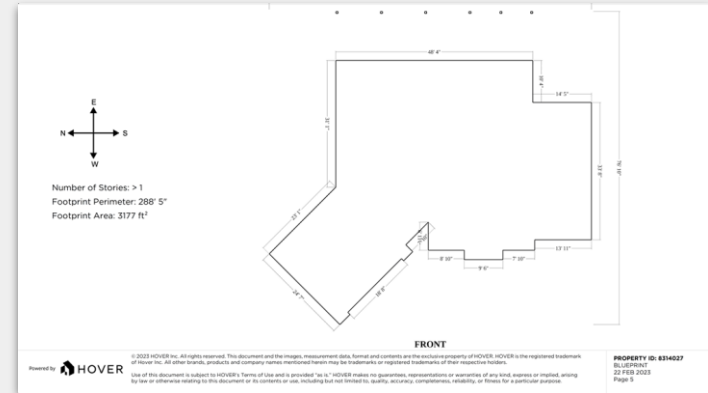
How to confirm measurement scale

Using the Hover Measurement PDF

1) Choose a line segment measurement on the original blueprint



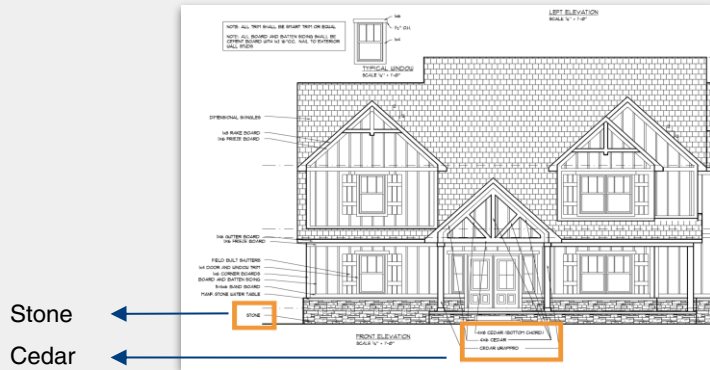
2) Cross-reference the blueprint line segment measurement with the Hover Measurement PDF



How to confirm materials

Using the Hover 3D Model

1) Review the original blueprint to see if material types are specified in the plans



2) Cross-reference the materials on the 3D model

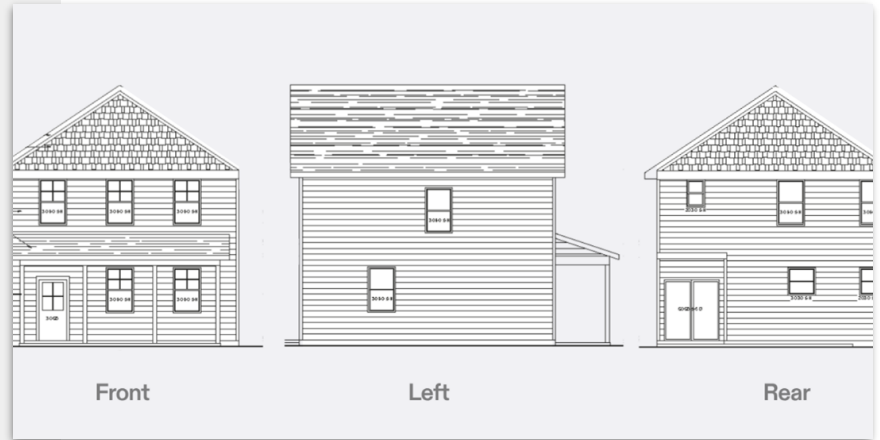


MISSING ELEVATION SHOTS

Elevation shots are drawings of a property's exterior walls. Every blueprint we receive - even if you are requesting Roof-Only measurements - must include an elevation drawing of each side of the building: front, back, left, and right.

How to fix it:

If you received a notification that your job has been paused due to missing elevation shots, please respond to the email with the missing structure elevation drawing(s).



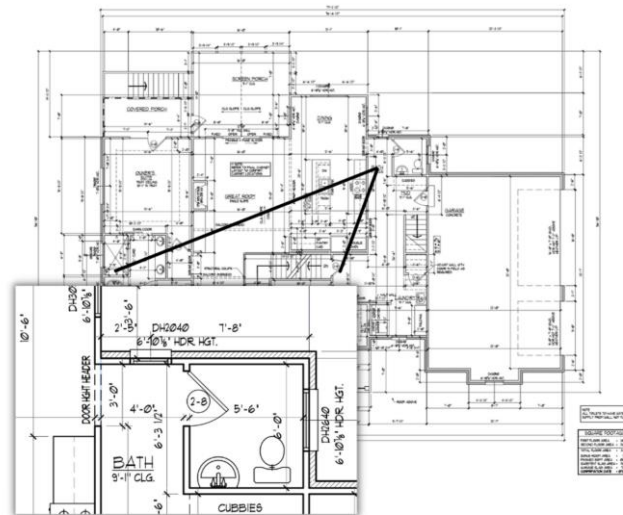
MISSING FLOOR PLAN

We require a floor plan with measurements for each level of the building - even if you are requesting Roof-Only deliverables.

The measurements must also be legible when zoomed-in on the blueprint.

How to fix it:

If you received a notification email about missing floor plan(s), please respond directly to the email with the missing floor plans attached.



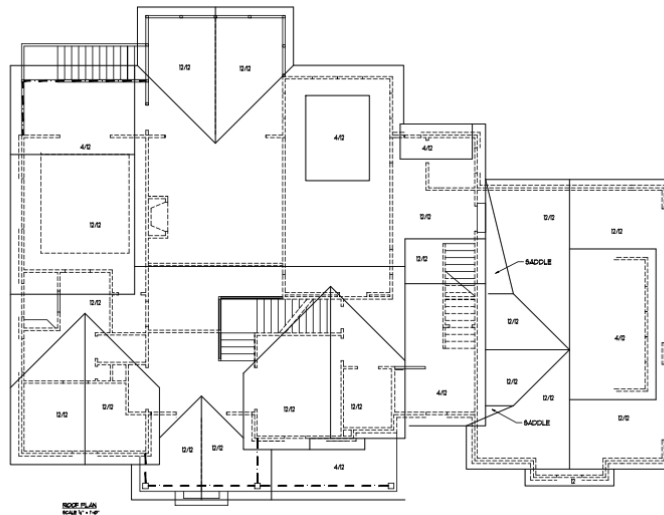
MISSING ROOF PLAN

Though it's typically optional to include a roof plan or roof framing plan, we highly recommend including one for the best results.

How to fix it:

If you receive an email notification that your blueprint job was paused due to a missing roof plan, it's because your original blueprint submission is complex.

To ensure the accuracy of our report, we need the structure's roof plan.



BLURRY OR LOW RESOLUTION

The blueprint(s) we receive must be legible when zoomed-in. If the blueprint(s) are too blurry or have a low resolution, we'll pause your job and notify you.

How to fix it:

If you received a notification that your job has been paused due to low resolution, please respond directly to the notification email with the higher resolution blueprint(s) attached.



BUILDINGS NOT SPECIFIED

If the blueprint contains more than one structure, you need to specify which of the structures should be built.

How to fix it:

If you received a notification that your job has been paused due to the building not being specified, please respond directly to the notification email with the design variant name that you want us to build.

The name must match the name of the structure as it appears on the blueprint.

Finalize your job

blueprint example

- Under 10k ft² roof area
- Complete measurements

Please name each separate structure and any variations you need based on what appears in the blueprint.

A job will be created for each structure. Each job will include the measurements options you previously selected.

Summary 1 jobs

Structures + Add structure

Structure name

← Submit

Example:

Let's say the blueprint contains a house and a detached garage. If you only want the 3D model and measurements for the house, provide a name that specifies that, like "Main Building" or "Main House."

If you want a 3D model and measurements for the garage as well, click the **+ Add structure**

Need some help?

We're always just a phone call (or email, or chat) away.

Hover Support Team

7AM - 10PM EST (M-F)

8AM - 8PM EST (S-SU)



+1.844.754.6837



support@hover.to



In the app, tap 'Settings' then 'Support' to chat

94% satisfaction

WITH CUSTOMER SUPPORT

(Yes, these are real customer responses)